

FORT CAMPBELL, KENTUCKY

ILS or LOC RWY 23

LOC I-FKP 111.9 Chan 56	APCH CRS 225°	Rwy Idg TDZE Arprt Elev 10,926 571 571
---	-------------------------	--

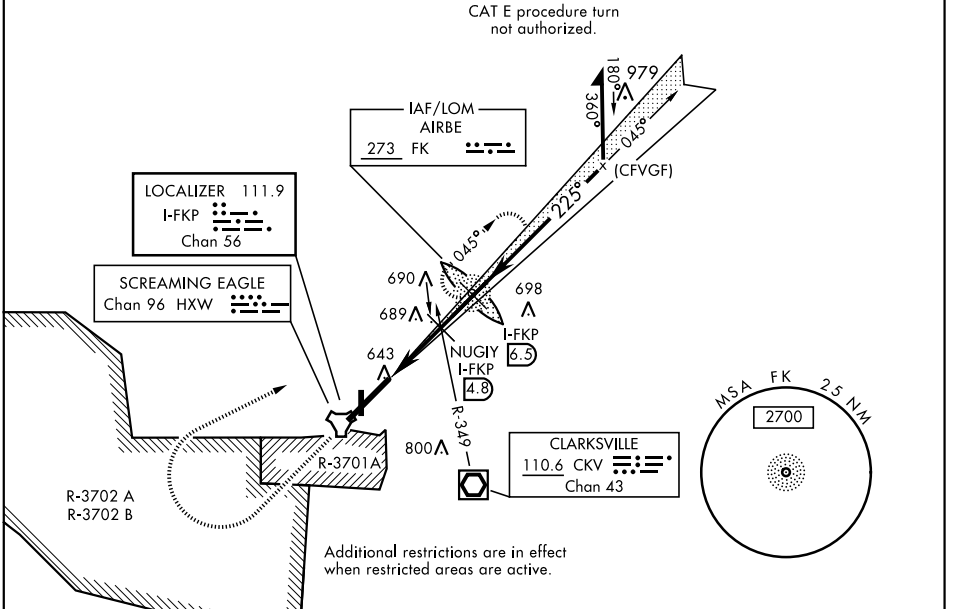
AL-679 [USA]

CAMPBELL AAF (KHOP)

▼ *When ALS inop, increase CAT E RVR to 40. RVR 18 authorized with use of FD or AP or HUD to DA.	SSALR 	MISSED APPROACH: Climb to 1200 then climbing right turn to 2500 direct AIRBE LOM/I-FKP 6.5 DME, continue climb-in-hold to 2500.

ATIS 125.175 308.4	CAMPBELL APP CON 118.1 269.525	CAMPBELL TOWER 120.9 278.8	GND CON 121.8 266.8	CLNC DEL 138.8	ASR/PAR
------------------------------	--	--------------------------------------	-------------------------------	--------------------------	---------

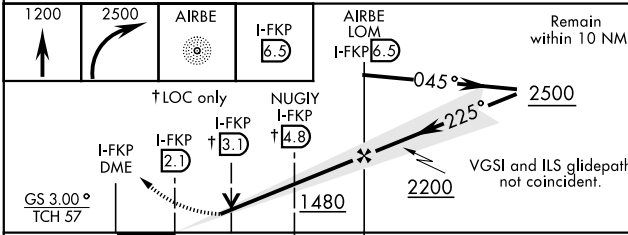
** When ALS inop, increase CAT CDE RVR to 55.
 *** Circling not authorized SE of Rwy 5-23.



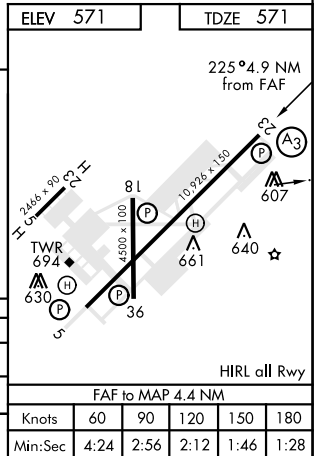
Additional restrictions are in effect when restricted areas are active.

RADAR REQUIRED

(for procedure entry)



CATEGORY	A	B	C	D	E
S-ILS 23 *	771/24		200	(200-½)	
S-LOC 23**	940/24	369 (400-½)	940/40	369 (400-¾)	
*** CIRCLING	1060-1 489 (500-1)		1060-1½ 489 (500-1½)	1140-2 569 (600-2)	



FORT CAMPBELL, KENTUCKY

36° 40' N - 87° 30' W

CAMPBELL AAF (KHOP)

Amdt 13 05DEC19

ILS or LOC RWY 23

SE-1, 25 MAR 2021 to 22 APR 2021

SE-1, 25 MAR 2021 to 22 APR 2021