

FORT CAMPBELL, KENTUCKY

# RNAV (GPS) RWY 23

WAAS Chan <b>56203</b> <b>W23A</b>	APCH CRS <b>225°</b>	Rwy Idg <b>10,926</b> TDZE <b>571</b> Arprt Elev <b>571</b>
--	-------------------------	---

AL-679 [USA]

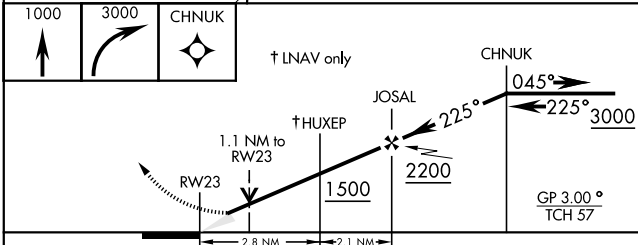
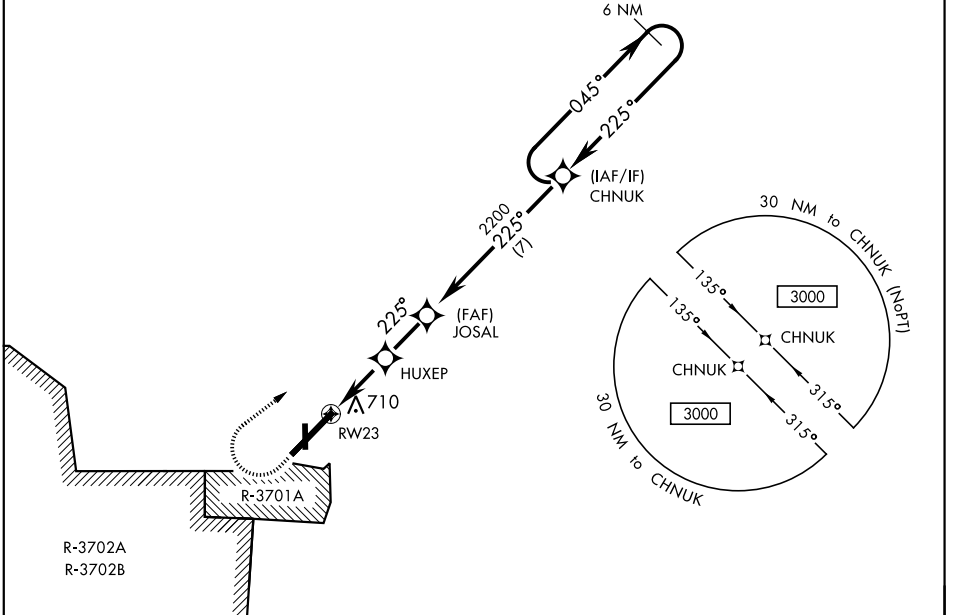
CAMPBELL AAF (KHOP)

▼ * When ALS inop, increase CAT E RVR to 40. ** When ALS inop, increase CAT E RVR to 50. *** When ALS inop, increase CAT E RVR to 60.	SSALR <b>(A3)</b>	MISSED APPROACH: Climb to 1000 then climbing right turn to 3000 direct CHNUK and hold.
	ATIS <b>125.175 308.4</b>	CAMPBELL APP CON <b>118.1 269.525</b>
GND CON <b>121.8 266.8</b>		CLNC DEL <b>138.8</b>
ASR/PAR		

\*\*\*\* Circling NA SE of Rwy 5-23.

DME/DME RNP-0.3 NA.

For uncompensated BARO-VNAV systems, LNAV/VNAV NA below -19°C (-2°F) or above 54°C (130°F).



ELEV 571	TDZE 571
225° to RWY 23 2468 x 70 81 4500 x 100 10 926 x 150 TW 694 630 607 661 640 36 A3 5	
HIRL all Rwy	

CATEGORY	A	B	C	D	E
LPV DA *	771/24		200	(200-½)	
LNAV/DA **	891/24		320	(400-½)	
VNAV					
LNAV MDA ***	960/24	389 (400-½)	960/35		389 (400-¾)
****			1060-1½	1140-2	569 (600-2)
☑ CIRCLING	1060-1	489 (500-1)	489 (500-1½)		

FORT CAMPBELL, KENTUCKY

36° 40' N - 87° 30' W

CAMPBELL AAF (KHOP)

Amdt 1A 24MAY18

# RNAV (GPS) RWY 23

SE-1, 25 MAR 2021 to 22 APR 2021

SE-1, 25 MAR 2021 to 22 APR 2021