


LOC I-HKY 108.7	APP CRS 241°	Rwy Idg TDZE Apt Elev	6401 1190 1190
---------------------------	------------------------	-----------------------------	---

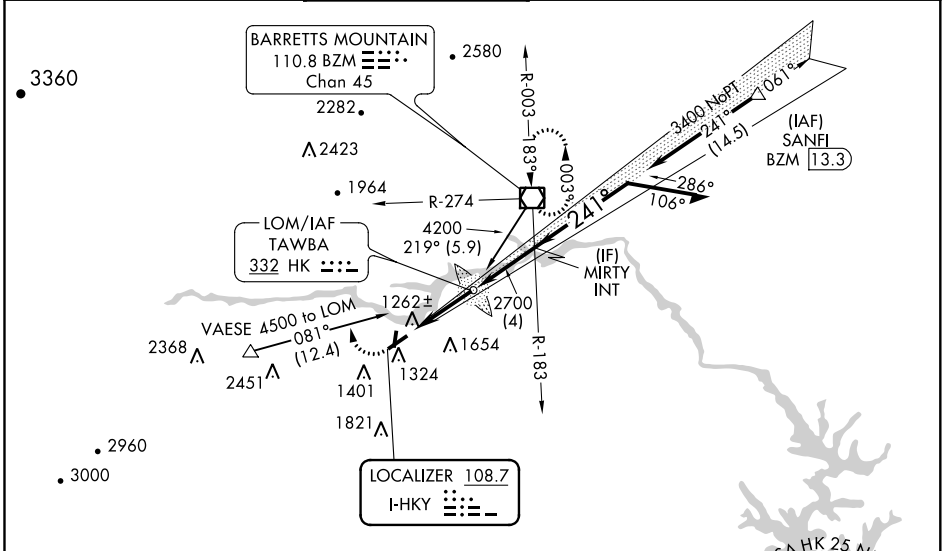
ILS or LOC RWY 24

HICKORY RGNL (HKY)

⚠ When local allimeter setting not received, use Morganton allimeter setting and increase all DA 39 feet and all MDA 40 feet; increase S-LOC 24 Cat C and D visibility 1/8 mile. For inoperative MALSR, increase S-LOC 24 Cat C/D visibility to 1 1/8 mile. Circling Rwy 1, 6, 19 NA at night.

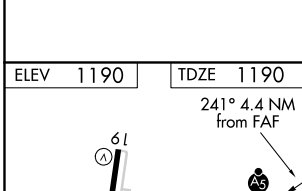
MALSR
 MISSED APPROACH: Climb to 1700 then climbing right turn to 4000 on heading 340° and on BZM VOR/DME R-274 to BZM VOR/DME and hold.

ASOS 118.325	ATLANTA CENTER 125.15 263.0	HICKORY TOWER ★ 128.15 (CTAF) 0	GND CON 121.7	CLNC DEL 121.7	CLNC DEL 124.25 (When twr closed)
------------------------	---------------------------------------	---	-------------------------	--------------------------	--



SE-2, 25 MAR 2021 to 22 APR 2021

SE-2, 25 MAR 2021 to 22 APR 2021



ALTERNATE MISSED APCH FIX

241° 1061°

TAWBA HK 332

1700	4000	BZM	HK LOM	Remain within 10 NM
↑	hdg 340°	R-274	2662	MIRTY INT
			2700	241° 3400
			3400	GS 3.00° TCH 53
4.4 NM				
4 NM				
CATEGORY	A	B	C	D
S-ILS 24	1390-1/2 200 (200-1/2)			
S-LOC 24	1600-1/2	410 (500-1/2)	1600-3/4	410 (500-3/4)
CIRCLING	1640-1	450 (500-1)	1640-1 1/2	1740-2 550 (600-2)

HIRL Rwy 6-24
MIRL Rwy 1-19
REIL Rwy 1
REIL Rws 6 and 19

FAF to MAP 4.4 NM

Knots	60	90	120	150	180
Min:Sec	4:24	2:56	2:12	1:46	1:28