

WAAS CH <b>82623</b> <b>W06A</b>	APP CRS <b>061°</b>	Rwy Idg <b>6401</b> TDZE <b>1152</b> Apt Elev <b>1190</b>
--	------------------------	---

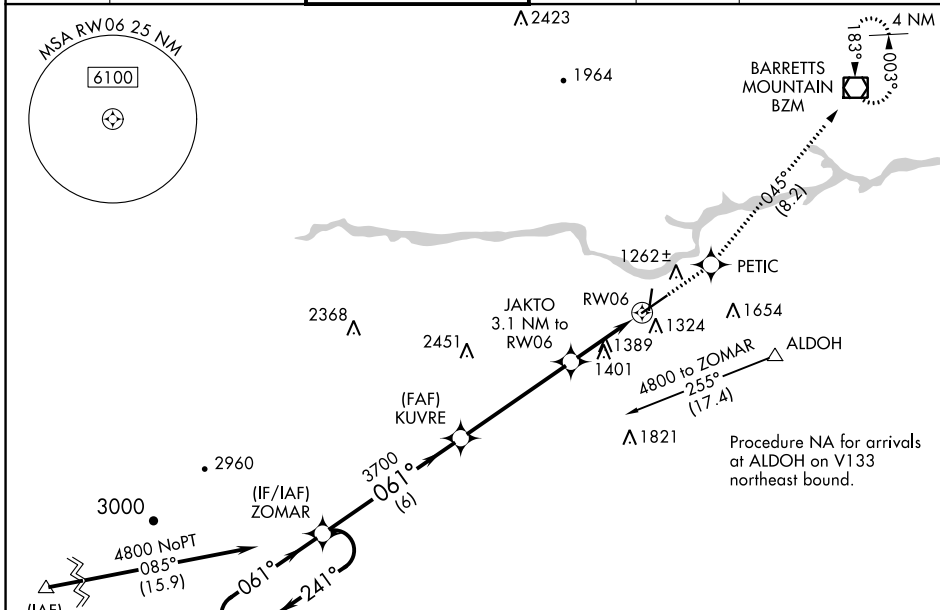
# RNAV (GPS) RWY 6

HICKORY RGNL (HKY)

**⚠** DME/DME RNP-0.3 NA. When local altimeter setting not received, use Morganton altimeter setting and increase all MDA 40 feet; increase LNAV and LP Cat C/D and Circling Cat C visibility 1/8 mile. When VGSi inop, Straight-in/Circling Rwy 6 procedure NA at night. When VGSi inop, Circling Rwy 1 and 19 NA at night. Rwy 1, 6, 19 helicopter visibility reduction below 1 SM NA.

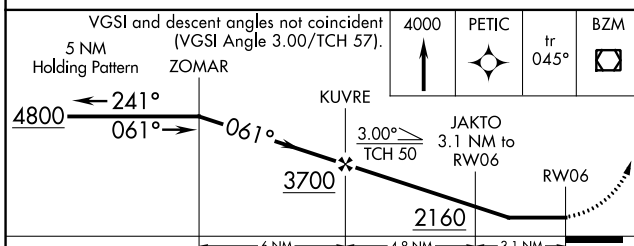
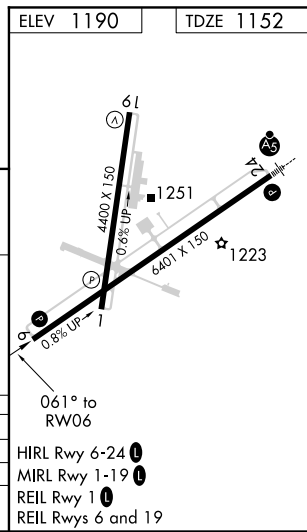
**MISSED APPROACH:** Climb to 4000 direct PETIC and on track 045° to BZM VOR/DME and hold.

ASOS <b>118.325</b>	ATLANTA CENTER <b>125.15 263.0</b>	HICKORY TOWER ★ <b>128.15 (CTAF) 0</b>	GND CON <b>121.7</b>	CLNC DEL <b>121.7</b>	CLNC DEL <b>124.25</b> (When twr closed)
------------------------	---------------------------------------	---	-------------------------	--------------------------	--



Procedure NA for arrivals at ALDOH on V133 northeast bound.

Procedure NA for arrivals at GENOD on V20-222 southwest bound and V605 southbound.



CATEGORY	A	B	C	D
LP MDA	1560-1	408 (400-1)	1560-1¼	408 (400-1¼)
LNAV MDA	1740-1	588 (600-1)	1740-1¾	588 (600-1¾)
CIRCLING	1740-1	550 (600-1)	1740-1¾	550 (600-2)

- HIRL Rwy 6-24 0
- REIL Rwy 1-19 0
- REIL Rwy 1 0
- REIL Rws 6 and 19

SE-2, 25 MAR 2021 to 22 APR 2021

SE-2, 25 MAR 2021 to 22 APR 2021