

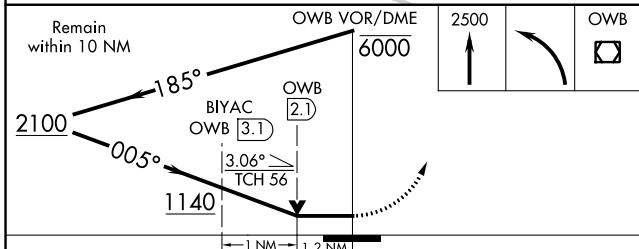
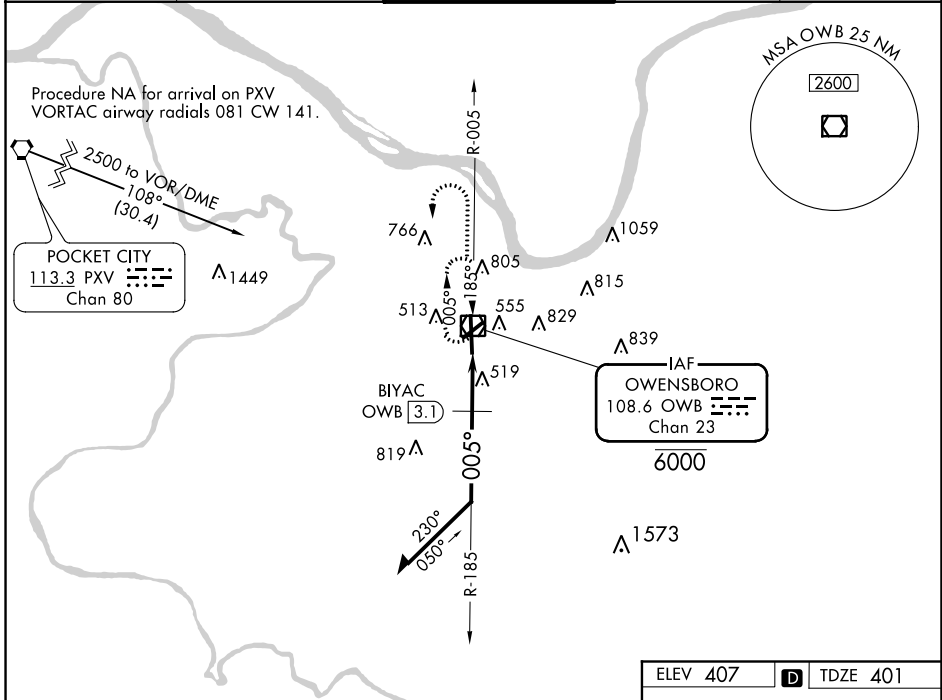
VOR/DME OWB 108.6 Chan 23	APP CRS 005°	Rwy Idg TDZE Apt Elev	8000 401 407
---	------------------------	-----------------------------	---

VOR RWY 36

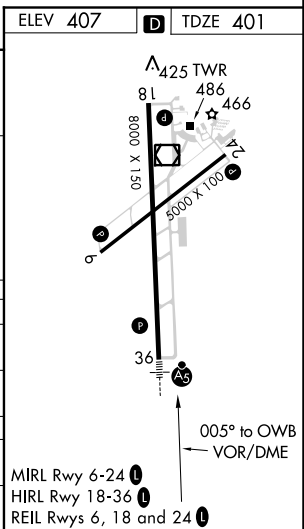
OWENSBORO-DAVIESS COUNTY RGNL (OWB)

For inop ALS, increase S-36 Cat C and D visibility to 2 SM and BIYAC fix minimums S-36 Cat C and D visibility to 1½ SM.	MALSR	MISSED APPROACH: Climb to 2500 then left turn direct OWB VOR/DME and hold.
---	-------	--

AWOS-3PT 119.025	EVANSVILLE APP CON ★ 124.025 290.9	OWENSBORO TOWER ★ 120.7 (CTAF) 251.15	GND CON 121.7	UNICOM 122.95
----------------------------	--	---	-------------------------	-------------------------



CATEGORY	A	B	C	D
S-36	1140-½	739 (800-½)	1140-1½	739 (800-1½)
CIRCLING	1140-1	733 (800-1)	1140-2	733 (800-2)
BIYAC FIX MINIMUMS				
S-36	820-½	419 (500-½)	820-¾	419 (500-¾)
CIRCLING	860-1	1120-1	1140-2	1140-2¼
	453 (500-1)	713 (800-1)	733 (800-2)	733 (800-2¼)



VOR RWY 36

SE-1, 25 MAR 2021 to 22 APR 2021

SE-1, 25 MAR 2021 to 22 APR 2021