

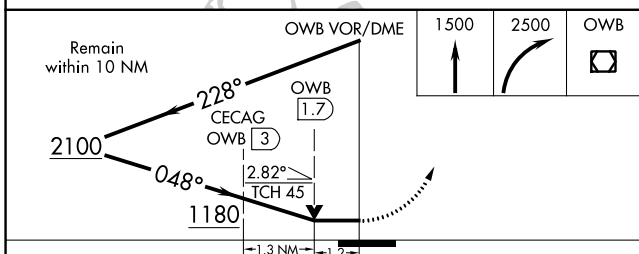
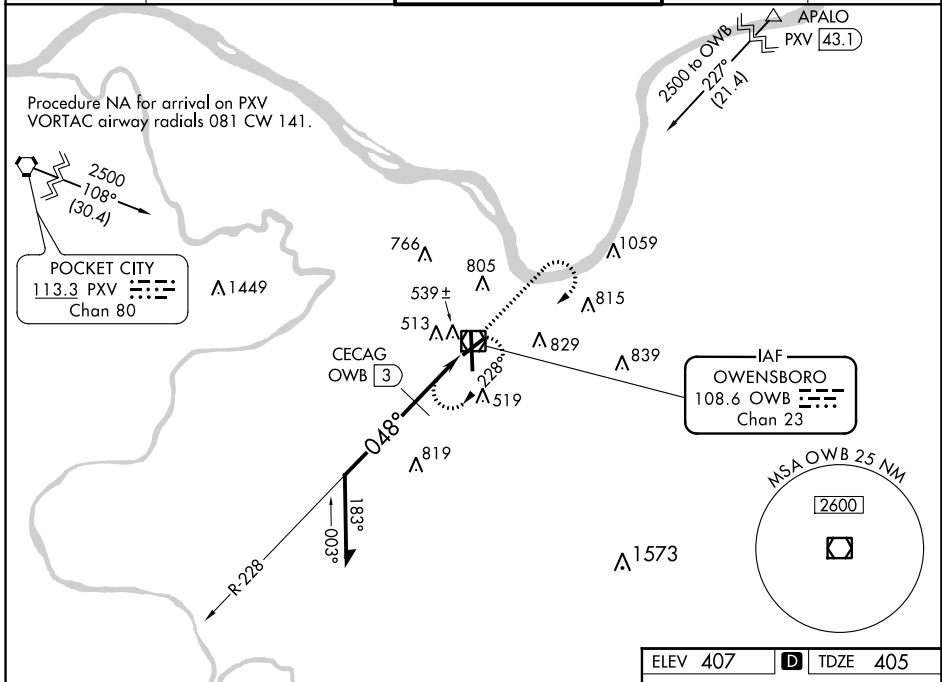
VOR/DME OWB	APP CRS	Rwy Idg	5000
108.6	048°	TDZE	405
Chan 23		Apt Elev	407

VOR RWY 6

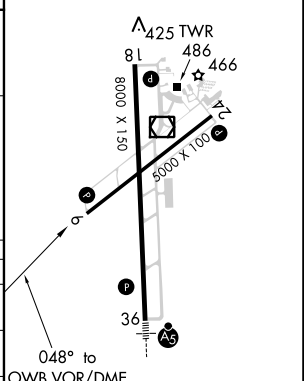
OWENSBORO-DAVIESS COUNTY RGNL (OWB)

▼ Rwy 6 helicopter visibility reduction below 3/4 SM NA.
▲ MISSED APPROACH: Climb to 1500 then climbing right turn to 2500 direct OWB VOR/DME and hold.

AWOS-3PT	EVANSVILLE APP CON *	OWENSBORO TOWER *	GND CON	UNICOM
119.025	124.025 290.9	120.7 (CTAF) 251.15	121.7	122.95



ELEV 407	D TDZE 405
----------	-------------------



CATEGORY	A	B	C	D
S-6	1180-1 775 (800-1)	1180-1¼ 775 (800-1¼)	1180-2½	775 (800-2½)
C CIRCLING	1180-1 773 (800-1)	1180-1¼ 773 (800-1¼)	1180-2½	773 (800-2½)
CECAG FIX MINIMUMS				
S-6	820-1	415 (500-1)	820-1½	415 (500-1½)
C CIRCLING	860-1 453 (500-1)	1120-1 713 (800-1)	1140-2 733 (800-2)	1140-2¼ 733 (800-2¼)

MIRL Rwy 6-24
 HIRL Rwy 18-36
 REIL Rws 6, 18, and 24

VOR RWY 6

SE-1, 25 MAR 2021 to 22 APR 2021

SE-1, 25 MAR 2021 to 22 APR 2021