

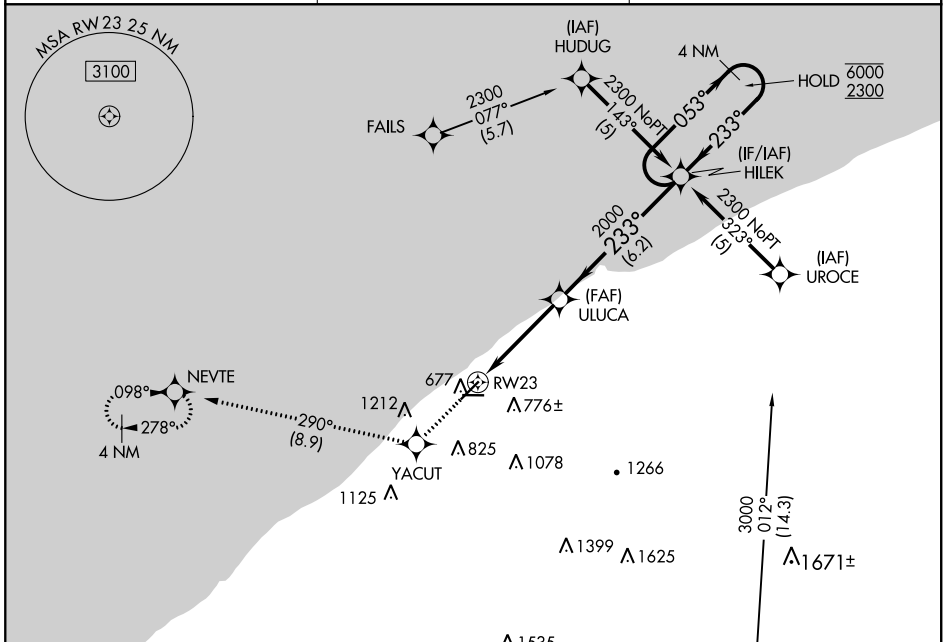
WAAS CH 82410 W23A	APP CRS 233°	Rwy Idg 5028
		TDZE 623
		Apt Elev 626

RNAV (GPS) RWY 23

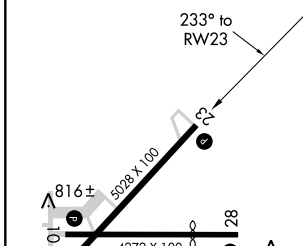
LAKE COUNTY EXECUTIVE (LNN)

RNP APCH.
 ▼ Rwy 23 helicopter visibility reduction below ¾ SM NA. For uncompensated Baro-VNAV systems, LNAV/VNAV NA below -16°C or above 54°C.
 MISSED APPROACH: Climb to 2300 direct YACUT and on track 290° to NEVTE and hold.

AWOS-3PT 119.225	CLEVELAND APP CON 125.35 346.325	UNICOM 122.725 (CTAF) 0
----------------------------	--	--



ELEV 626	TDZE 623
----------	----------



2300	YACUT	tr 290°	NEVTE	VGSI and RNAV glidepath not coincident (VGSI Angle 4.00/TCH 54).	4 NM Holding Pattern
			ULUCA	HILEK	
			*1.2 NM to RWY23	2000	053° → 6000
				2000	← 233° 2300
			1.2 NM	3 NM	6.2 NM
					GP 3.00° TCH 40

CATEGORY	A	B	C	D
LPV DA		1031-1½ 408 (500-1½)		NA
LNAV/VNAV DA		1142-1¾ 519 (600-1¾)		NA
LNAV MDA	1200-1	577 (600-1)	1200-1½ 577 (600-1½)	NA
CIRCLING	1200-1	574 (600-1)	1200-1½ 574 (600-1½)	NA

EC-2, 25 MAR 2021 to 22 APR 2021

EC-2, 25 MAR 2021 to 22 APR 2021