

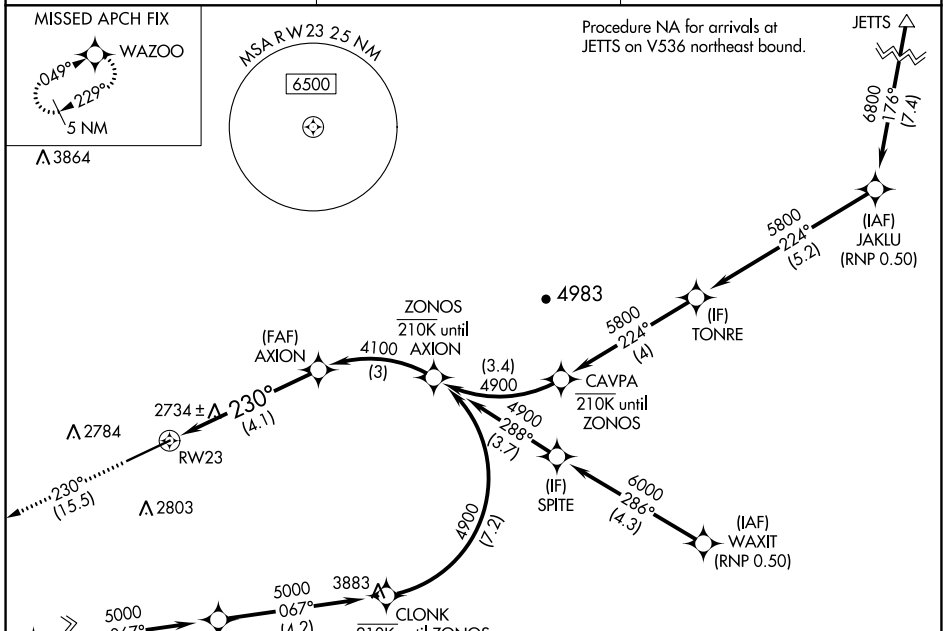
APP CRS	Rwy Idg	7100
230°	TDZE	2552
	Apt Elev	2567

RNAV (RNP) Z RWY 23

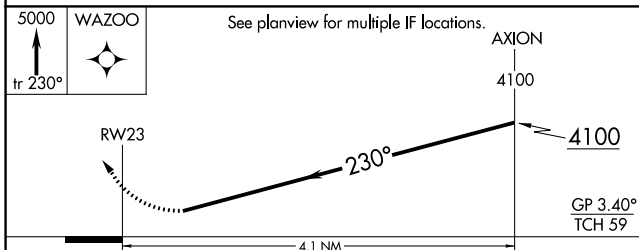
PULLMAN/MOSCOW RGNL (PUW)

RNP AR APCH. RF required.	MISSED APPROACH: Climb to 5000 on track 230° to WAZOO and hold.
<p>▼ For uncompensated Baro-VNAV systems, procedure NA below -20°C or above 50°C.</p> <p>▲ NA</p>	

ASOS 135.675	SEATTLE CENTER 123.95 290.55	UNICOM 122.8 (CTAF) 0
------------------------	--	---------------------------------

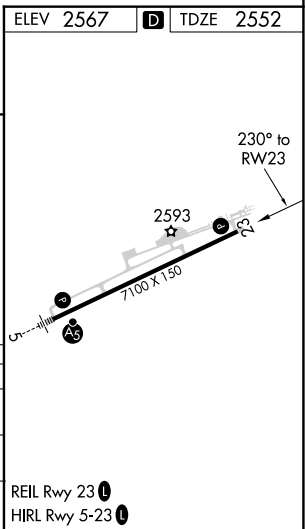


ELEV 2567	TDZE 2552
-----------	-----------



CATEGORY	A	B	C	D
RNP 0.22 DA		3041-1 ³ / ₈	489 (500-1 ³ / ₈)	
RNP 0.30 DA		3146-1 ³ / ₄	594 (600-1 ³ / ₄)	

AUTHORIZATION REQUIRED



NW-1, 25 MAR 2021 to 22 APR 2021

NW-1, 25 MAR 2021 to 22 APR 2021