

LOC I-JBD 108.95	APP CRS 053°	Rwy Idg 5342 TDZE 124 Apt Elev 125
----------------------------	------------------------	---

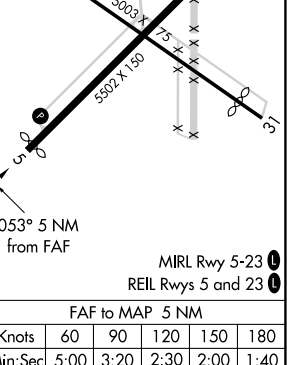
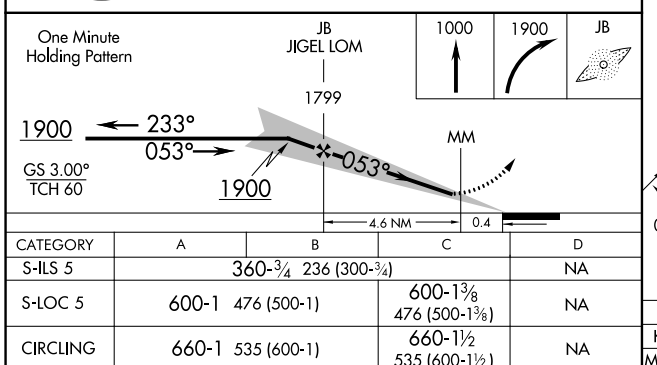
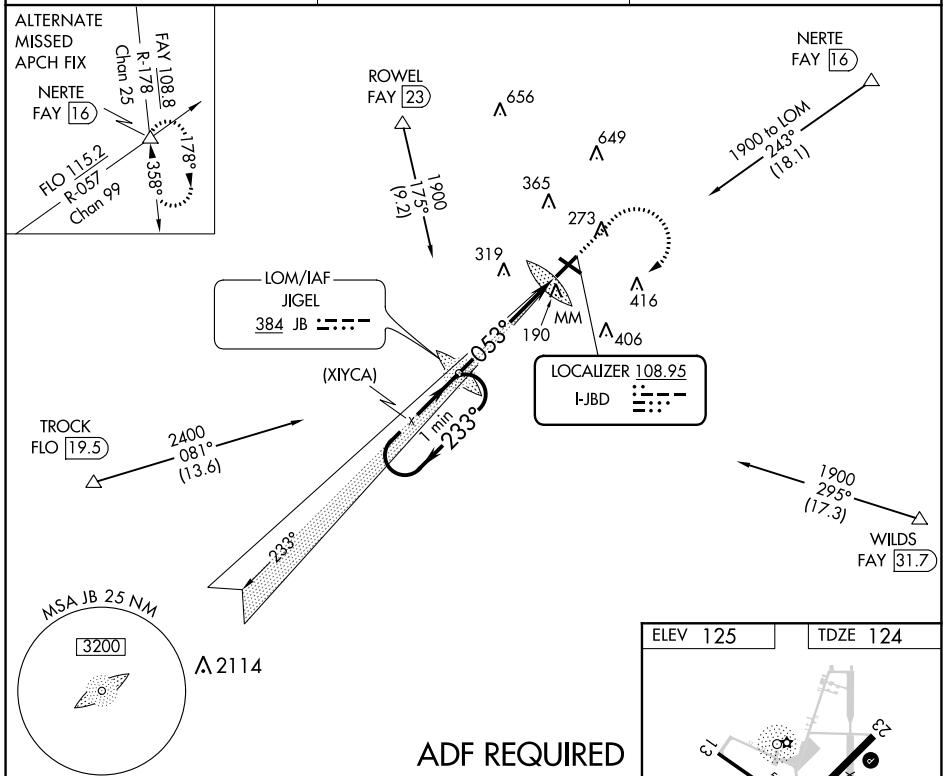
ILS or LOC RWY 5

LUMBERTON RGNL (LBT)

⚠ ADF required. When local altimeter setting not received, use Maxton altimeter setting and increase all DA 56 feet and all MDA 60 feet; increase S-ILS 5 all Cats visibility and S-LOC 5 Cat C visibility 1/8 mile. Circling to Rwy 13 and 31 NA at night. Autopilot coupled approach NA below 1250.

MISSED APPROACH: Climb to 1000 then climbing right turn to 1900 direct JIGEL LOM and hold.

ASOS 134.775	FAYETTEVILLE APP CON 133.0 290.25	UNICOM 122.8 (CTAF) 0
------------------------	---	---------------------------------



SE-2, 25 MAR 2021 to 22 APR 2021

SE-2, 25 MAR 2021 to 22 APR 2021