

WAAS CH <b>61221</b> <b>W13A</b>	APP CRS <b>133°</b>	Rwy Idg TDZE Apt Elev	<b>5003</b> <b>125</b> <b>125</b>
--	------------------------	-----------------------------	---

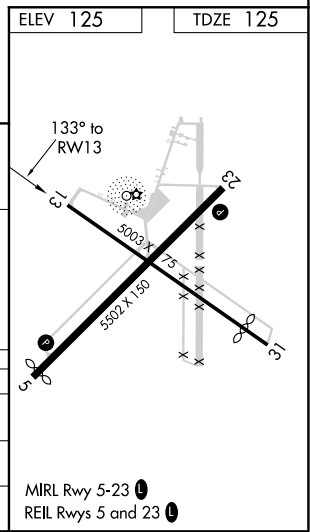
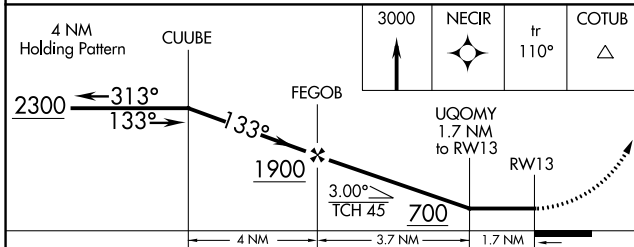
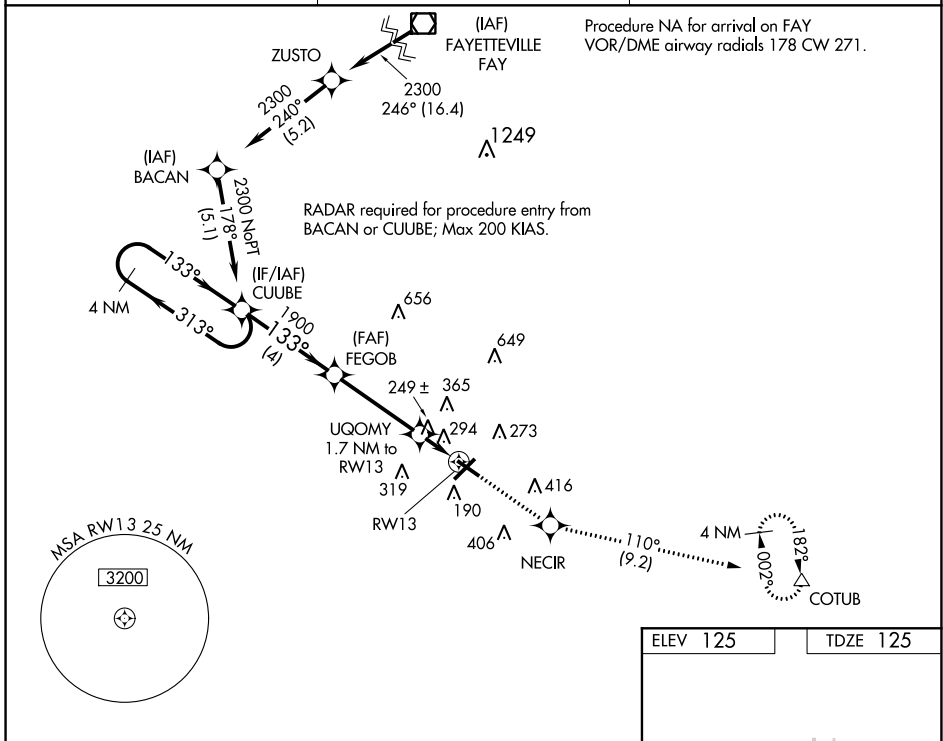
# RNAV (GPS) RWY 13

LUMBERTON RGNL (LBT)

**⚠** DME/DME RNP-0.3 NA. Helicopter visibility reduction below 1 SM NA. When local altimeter setting not received use Maxton altimeter setting and increase all MDA 60 feet; increase LP Cat C visibility ¼ mile and LNAV Cat C visibility ½ mile. Rwy 13 Straight-in and Circling and Circling to Rwy 31 NA at night.

**⚠** MISSED APPROACH: Climb to 3000 direct NECIR and on track 110° to COTUB and hold.

ASOS <b>134.775</b>	FAYETTEVILLE APP CON <b>133.0 290.25</b>	UNICOM <b>122.8 (CTAF)</b>
------------------------	---	-------------------------------



CATEGORY	A	B	C	D
LP MDA	500-1 375 (400-1)			NA
LNAV MDA	600-1	475 (500-1)	600-1 <sup>3</sup> / <sub>8</sub> 475 (500-1 <sup>3</sup> / <sub>8</sub> )	NA
CIRCLING	660-1	535 (600-1)	660-1 <sup>1</sup> / <sub>2</sub> 535 (600-1 <sup>1</sup> / <sub>2</sub> )	NA

SE-2, 25 MAR 2021 to 22 APR 2021

SE-2, 25 MAR 2021 to 22 APR 2021