

WAAS CH 50221 W23A	APP CRS 233°	Rwy Idg TDZE Apt Elev	5502 124 125
--	------------------------	-----------------------------	---

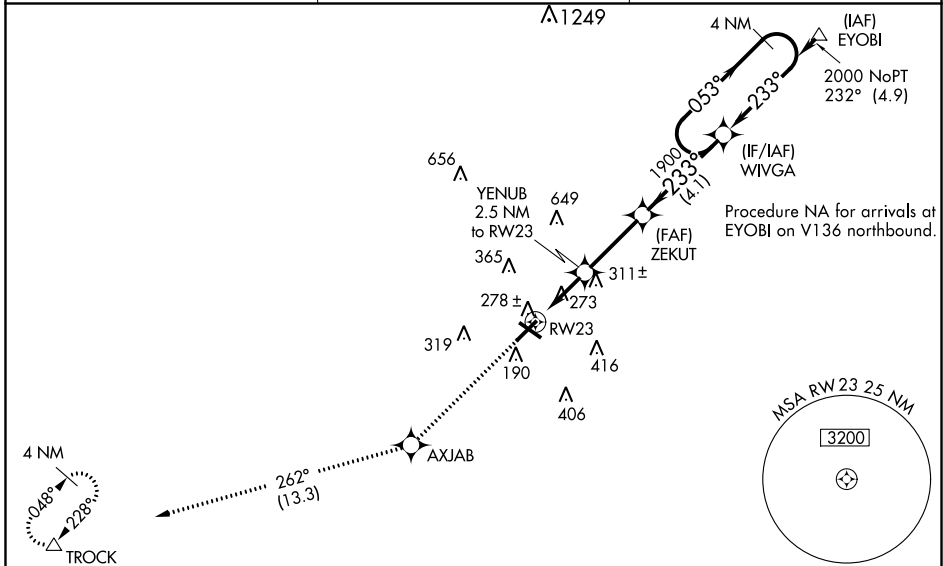
RNAV (GPS) RWY 23

LUMBERTON RGNL (LBT)

⚠ DME/DME RNP-0.3 NA. Helicopter visibility reduction below $\frac{3}{4}$ SM NA. When local altimeter setting not received use Maxton altimeter setting and increase all DA 56 feet and all MDA 60 feet; increase LPV and LNAV/VNAV all Cats visibility $\frac{1}{4}$ mile. Baro-VNAV and VDP NA with Maxton altimeter setting. Circling to Rwy 13 and 31 NA at night. For uncompensated Baro-VNAV systems, LNAV/VNAV NA below -15°C (5°F) or above 54°C (130°F).

MISSED APPROACH: Climb to 2200 direct AXJAB and on track 262° to TROCK and hold.

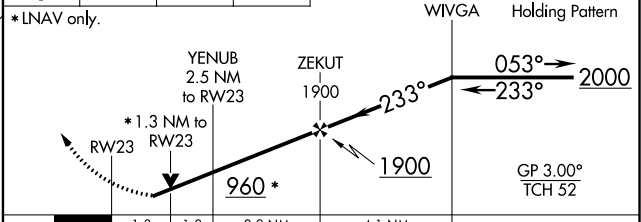
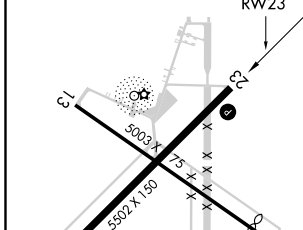
ASOS 134.775	FAYETTEVILLE APP CON 133.0 290.25	UNICOM 122.8 (CTAF) 0
------------------------	---	---------------------------------



SE-2, 25 MAR 2021 to 22 APR 2021

SE-2, 25 MAR 2021 to 22 APR 2021

ELEV 125	TDZE 124	2200	AXJAB	TROCK	VGSI and RNAV glidepath not coincident (VGSI Angle 3.20/TCH 45).
----------	----------	------	-------	-------	--



CATEGORY	A	B	C	D
LPV DA		413- $\frac{7}{8}$	289 (300- $\frac{7}{8}$)	NA
LNAV/VNAV DA		439-1	315 (400-1)	NA
LNAV MDA	580-1	456 (500-1)	580-1 $\frac{3}{8}$ 456 (500-1 $\frac{3}{8}$)	NA
CIRCLING	660-1	535 (600-1)	660-1 $\frac{1}{2}$ 535 (600-1 $\frac{1}{2}$)	NA