

WAAS CH 97421 W05A	APP CRS 053°	Rwy Idg TDZE 124 Apt Elev 125	5342
--	------------------------	---	-------------

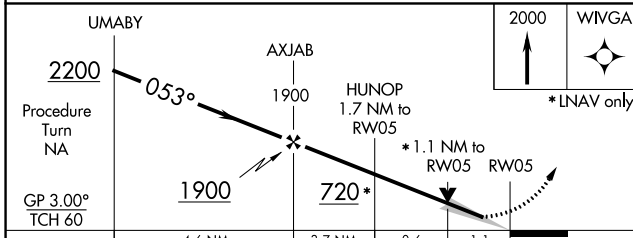
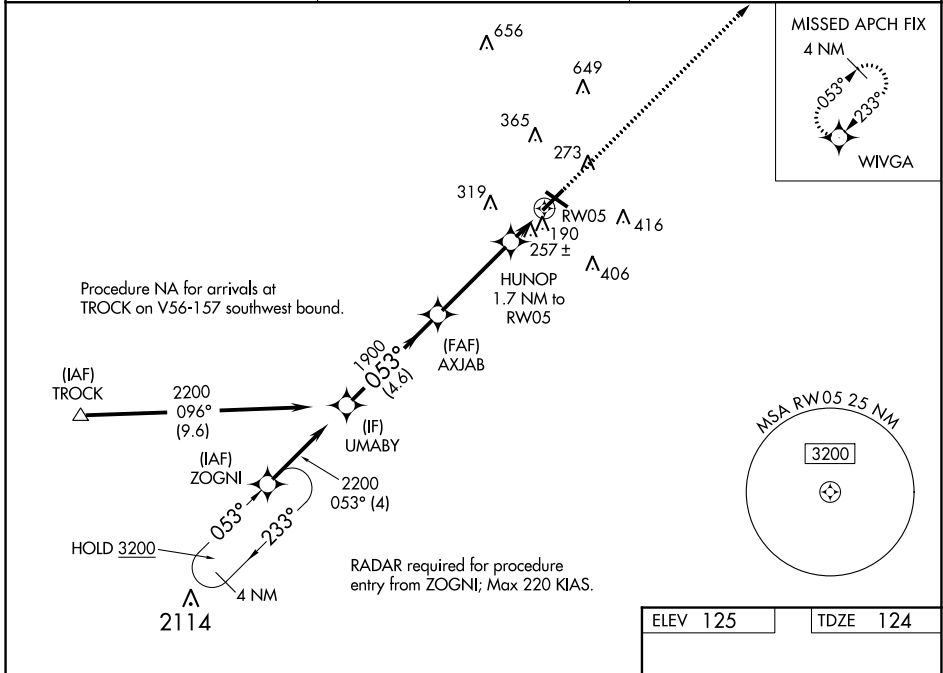
RNAV (GPS) RWY 5

LUMBERTON RGNL (LBT)

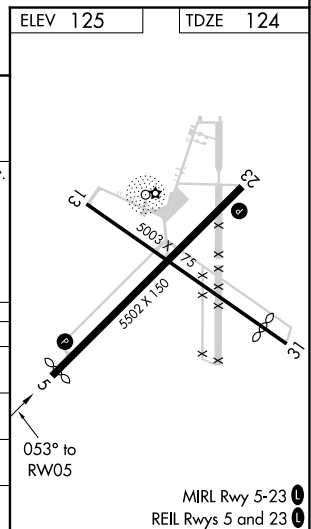
▽ DME/DME RNP-0.3 NA. When local altimeter setting not received use Maxton altimeter setting and increase all DA 56 feet and all MDA 60 feet; increase LNAV/VNAV all Cats visibility 1/8 mile and LNAV Cat C visibility 1/4 mile. Baro-VNAV and VDP NA with Maxton altimeter setting. Circling to Rwy 13 and 31 NA at night. For uncompensated Baro-VNAV systems, LNAV/VNAV NA below -15°C (5°F) or above 54°C (130°F).

MISSED APPROACH: Climb to 2000 direct WIVGA and hold.

ASOS 134.775	FAYETTEVILLE APP CON 133.0 290.25	UNICOM 122.8 (CTAF) 0
------------------------	---	---------------------------------



CATEGORY	A	B	C	D
LPV DA	327-3/4	203 (300-3/4)		NA
LNAV/VNAV DA	538-1 3/8	414 (500-1 3/8)		NA
LNAV MDA	520-1 396 (400-1)		520-1 1/8 396 (400-1 1/8)	NA
CIRCLING	660-1 535 (600-1)		660-1 1/2 535 (600-1 1/2)	NA



SE-2, 25 MAR 2021 to 22 APR 2021

SE-2, 25 MAR 2021 to 22 APR 2021