

VOR/DME FCA <b>113.2</b> Chan <b>79</b>	APP CRS <b>316°</b>	Rwy Idg TDZE Apt Elev	<b>3510</b> <b>2974</b> <b>2977</b>
---	------------------------	-----------------------------	---

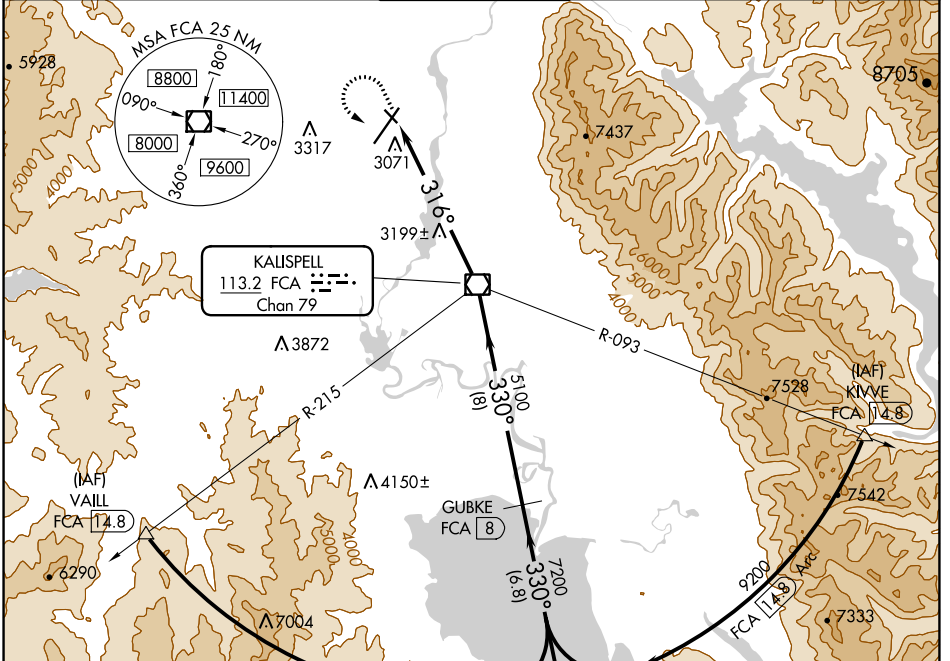
# VOR/DME RWY 30

GLACIER PARK INTL (GPI)

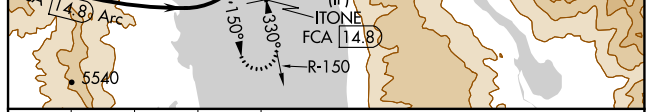
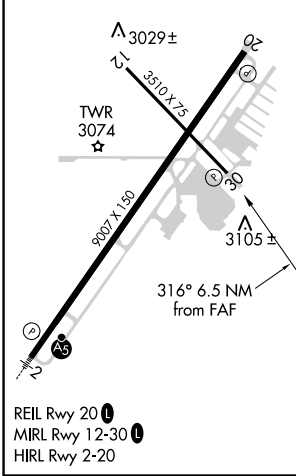
**⚠** Helicopter visibility reduction below 1 SM not authorized. When VGSI inoperative, straight-in minimums not authorized at night.

**⚠** MISSED APPROACH: Climb to 4000 then climbing left turn to 9300 via heading 130° and FCA VOR/DME R-150 to ITONE/14.8 DME and hold, continue climb-in-hold to 9300.

ATIS <b>132.625</b>	SALT LAKE CENTER <b>133.4 285.4</b>	GLACIER TOWER* <b>124.55 (CTAF) 0</b>	GND CON <b>121.6</b>	UNICOM <b>122.95</b>
------------------------	--	--	-------------------------	-------------------------



ELEV 2977 **D** TDZE 2974



4000	9300	FCA R-150	ITONE FCA 14.8	Descent angles NA.	ITONE FCA 14.8
↑	hdg 130°				
		FCA 6.5	FCA VOR/DME		
		316°	5100	7200	9200
		6.5 NM	8 NM	6.8 NM	

CATEGORY	A	B	C	D
S-30	3480-1	506 (600-1)	3480-1½	506 (600-1½)
<b>C</b> CIRCLING	3520-1 543 (600-1)	3580-1 603 (700-1)	3640-1¾ 663 (700-1¾)	3760-2½ 783 (800-2½)

NW-1, 25 MAR 2021 to 22 APR 2021

NW-1, 25 MAR 2021 to 22 APR 2021