

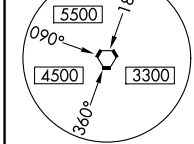
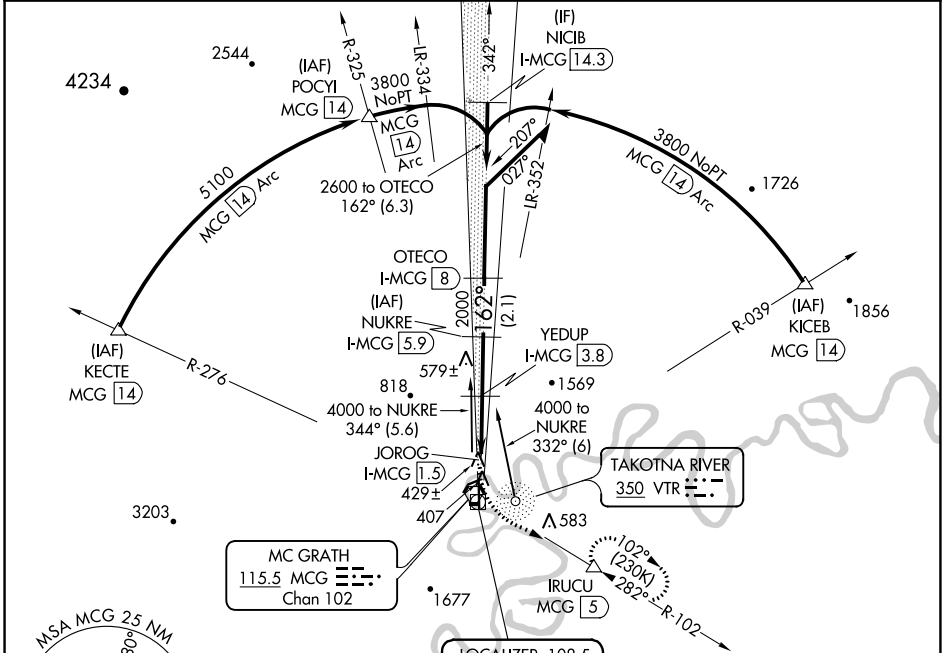
LOC/DME I-MCG 108.5 Chan 22	APP CRS 162°	Rwy Idg TDZE Apt Elev	4843 343 343
------------------------------------------	------------------------	-----------------------------	-----------------------------------------

LOC/DME RWY 16

MC GRATH (MCG)(PAMC)

MISSED APPROACH: Climb to 1000 then climbing left turn to 4000 via MCG VORTAC R-102 to IRUCU/MCG 5 DME and hold, continue climb-in-hold to 4000.

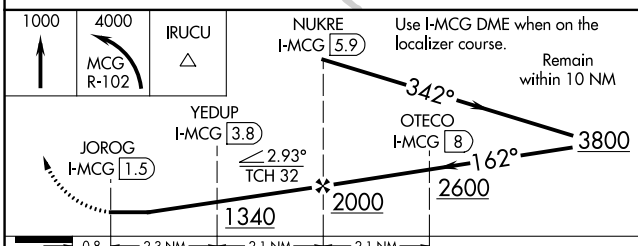
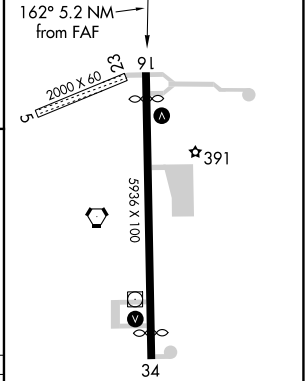
ASOS 135.65	ANCHORAGE CENTER 128.1 353.8	MCGRATH RADIO 123.6 (CTAF)
-----------------------	----------------------------------------	--------------------------------------



MC GRATH
115.5 MCG
Chan 102

LOCALIZER **108.5**
I-MCG
Chan 22
LOC offset 2.51°

ELEV 343	D	TDZE 343
----------	----------	----------



CATEGORY	A	B	C	D
S-16	760-1 417 (500-1)		760-1¼ 417 (500-1¼)	
CIRCLING	820-1 477 (500-1)		820-1½ 477 (500-1½)	1180-2¾ 837 (900-2¾)

MIRL Rwy 5-23 and 16-34
REIL Rwy 16 and 34

AK, 25 FEB 2021 to 22 APR 2021

AK, 25 FEB 2021 to 22 APR 2021