

LOC/DME I-UNK 111.3 Chan 50	APP CRS 150°	Rwy Idg 5900 TDZE 27 Apt Elev 27
---	------------------------	---

LOC RWY 15

UNALAKLEET (UNK)(PAUN)

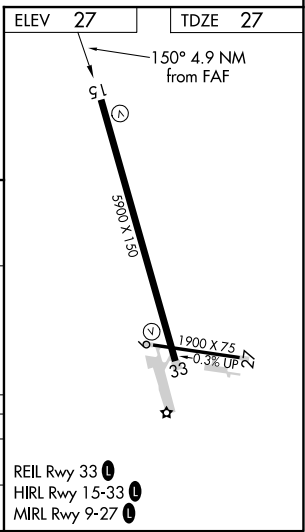
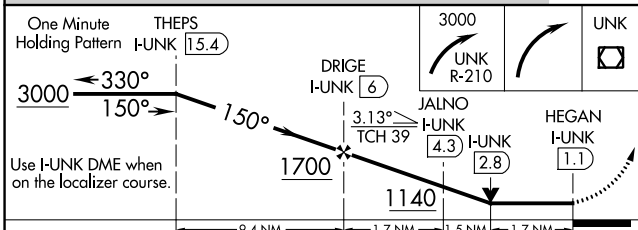
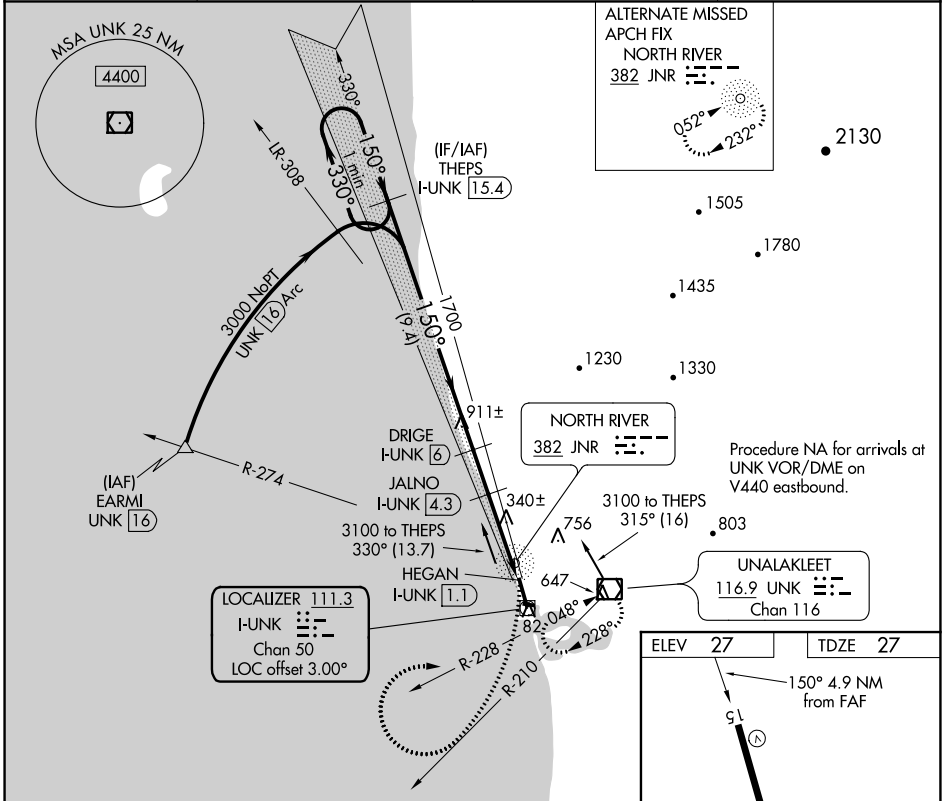
DME required.

⚠ Circling NA east of Rwy 15-33. Circling Rwy 9 NA at night. Rwy 15 helicopter visibility reduction below $\frac{3}{4}$ SM NA.

❄ -39°C

MISSED APPROACH: Climbing right turn to 3000 on UNK R-210 then right turn direct UNK VOR/DME and hold.

AWOS-3P 132.25	ANCHORAGE CENTER 135.7 335.5	NOME RADIO 122.3	CTAF 123.0
--------------------------	--	----------------------------	----------------------



CATEGORY	A	B	C	D
S-15	600-1	573 (600-1)	600-1 $\frac{5}{8}$	573 (600-1 $\frac{5}{8}$)
C CIRCLING	600-1 573 (600-1)	700-1 673 (700-1)	700-2 673 (700-2)	860-2 $\frac{3}{4}$ 833 (900-2 $\frac{3}{4}$)

AK, 25 FEB 2021 to 22 APR 2021

AK, 25 FEB 2021 to 22 APR 2021