

WAAS CH <b>50540</b> <b>W18A</b>	APP CRS <b>182°</b>	Rwy Idg TDZE <b>188</b> Apt Elev <b>188</b>	<b>4503</b>
--	------------------------	---	-------------

# RNAV (GPS) RWY 18

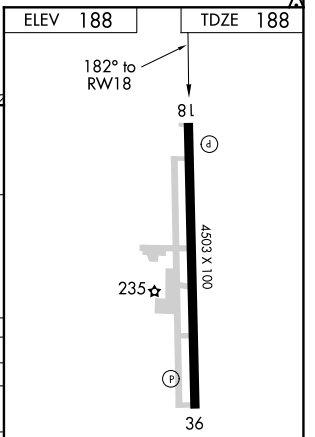
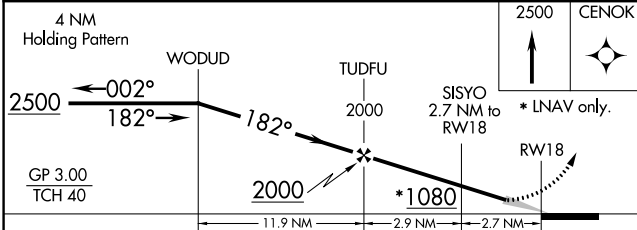
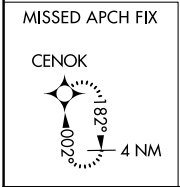
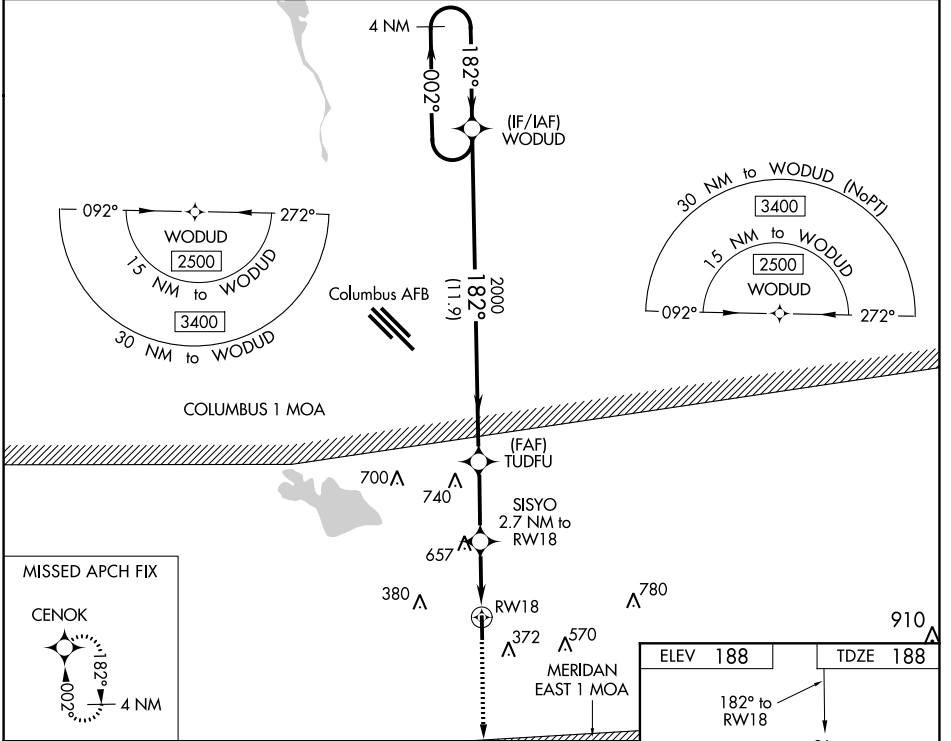
COLUMBUS-LOWNDES COUNTY (UBS)

**W** DME/DME RNP-0.3 NA. Use Columbus AFB altimeter setting; when not received, use Golden Triangle Rgnl altimeter setting and increase all DA 5 feet and all MDA 20 feet. Baro-VNAV NA.

**A** NA MISSED APPROACH: Climb to 2500 direct CENOK and hold.

COLUMBUS APP CON ★ **135.6 323.275**

UNICOM **122.8 (CTAF)**



CATEGORY	A	B	C	D
LPV DA		469-1	281 (300-1)	
LNAV/VNAV DA		1107-4	919 (1000-4)	
LNAV MDA	1000-1 812 (900-1)	1000-1¼ 812 (900-1¼)	1000-2½ 852 (900-2½)	812 (900-2½)
CIRCLING	1000-1¼ 812 (900-1¼)		1040-2½ 852 (900-2½)	1040-2¾ 852 (900-2¾)

MIRL Rwy 18-36

SC-4, 25 MAR 2021 to 22 APR 2021

SC-4, 25 MAR 2021 to 22 APR 2021