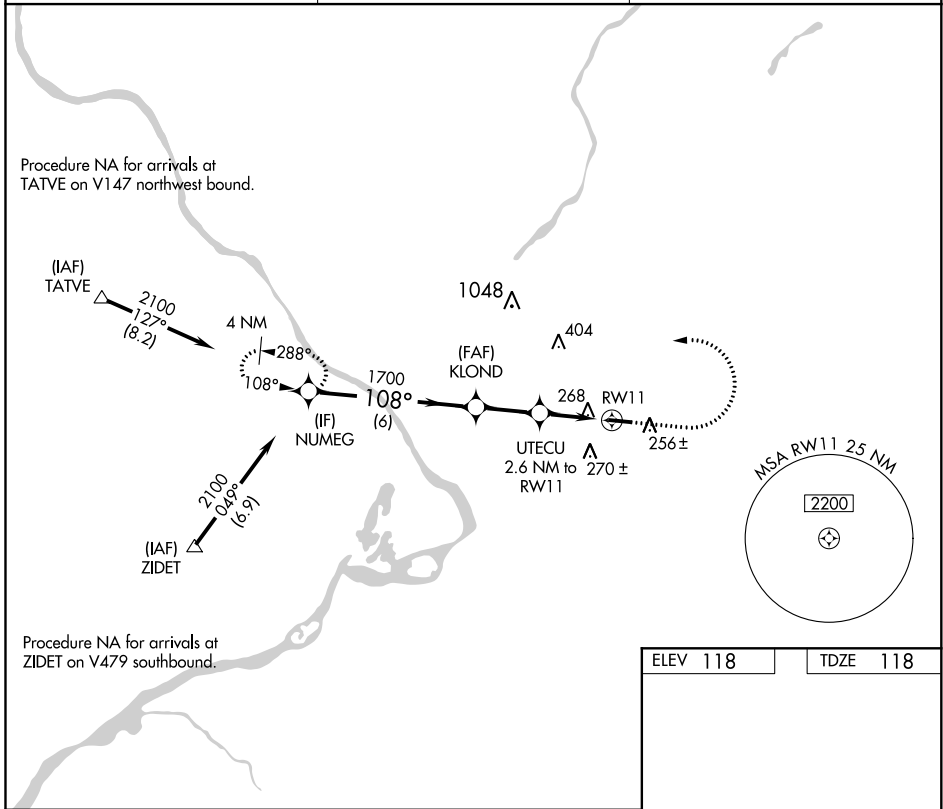


APP CRS	Rwy Idg	3877
108°	TDZE	118
	Apt Elev	118

RNAV (GPS) RWY 11

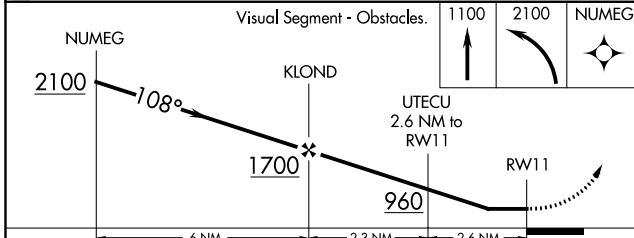
TRENTON-ROBBINSVILLE (N87)

RNP APCH.		MISSED APPROACH: Climb to 1100, then climbing left turn to 2100 direct NUMEG and hold.
<p>▼ Procedure NA at night. Rwy 11 helicopter visibility reduction below 1 SM NA. Use Wrightstown altimeter setting.</p> <p>▲ NA</p>		
MC GUIRE APP CON	UNICOM	123.3 0
126.475 363.8	123.0 (CTAF)	

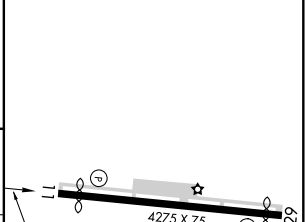


NE-2, 25 MAR 2021 to 22 APR 2021

NE-2, 25 MAR 2021 to 22 APR 2021



ELEV 118	TDZE 118
----------	----------



CATEGORY	A	B	C	D
LNVA MDA	640-1	522 (600-1)	640-1 ⁵ / ₈	522 (600-1 ⁵ / ₈)
CIRCLING	680-1	562 (600-1)	680-1 ⁵ / ₈	680-2
			562 (600-1 ⁵ / ₈)	562 (600-2)

MIRL Rwy 11-29 **0**