

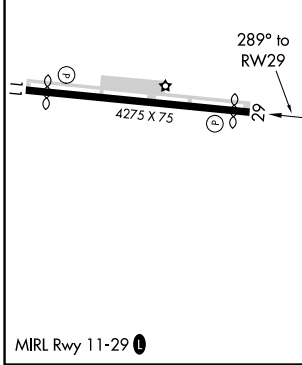
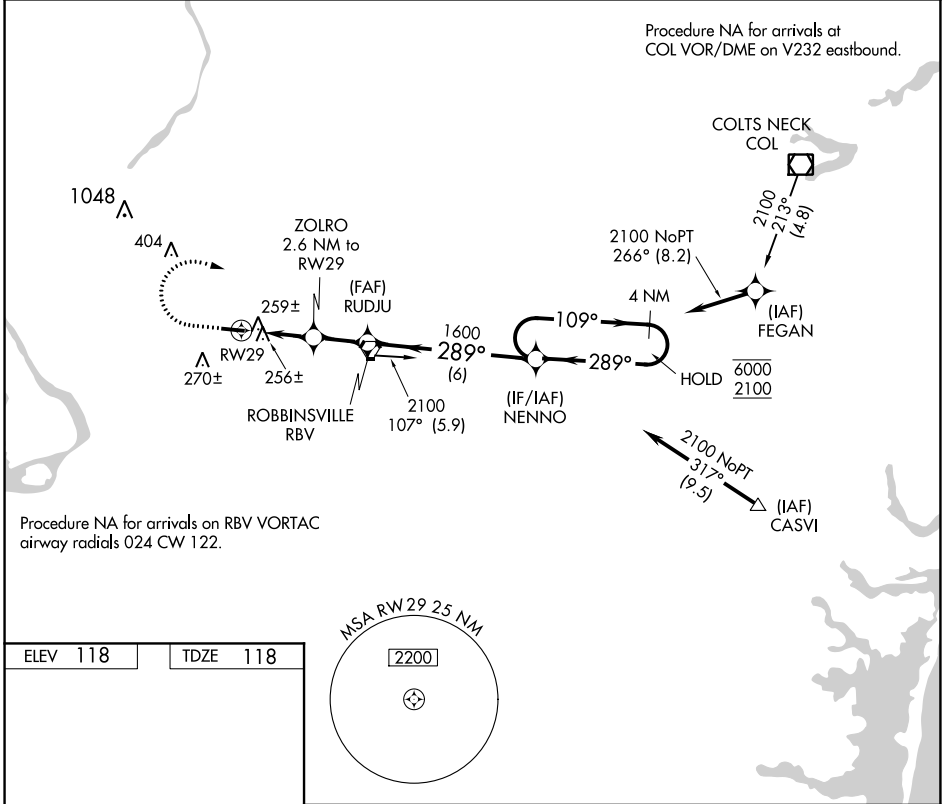
APP CRS	Rwy ldg	<b>3975</b>
<b>289°</b>	TDZE	<b>118</b>
	Apt Elev	<b>118</b>

# RNAV (GPS) RWY 29

TRENTON-ROBBINSVILLE (N87)

RNP APCH.	MISSED APPROACH: Climb to 1000, then climbing right turn to 2100 direct NENNO and hold.
<p>Procedure NA at night. Rwy 29 helicopter visibility reduction below 1 SM NA. Use Wrightstown altimeter setting.</p>	

MC GUIRE APP CON <b>126.475 363.8</b>	UNICOM <b>123.0 (CTAF)</b>	<b>123.3 0</b>
--	-------------------------------	----------------



MSA RWY 29 25 NM [2200]			
1000	2100	NENNO	Visual Segment - Obstacles.
↑	↷	✦	
RWY 29		ZOLRO 2.6 NM to RWY 29	4 NM Holding Pattern
980		1600	6000 / 2100
2.6 NM		1.9 NM	6 NM
CATEGORY	A	B	C D
LNAV MDA	540-1	422 (500-1)	540-1¼ 422 (500-1¼)
CIRCLING	680-1	562 (600-1)	680-1½ 562 (600-1½) 680-2 562 (600-2)

NE-2, 25 MAR 2021 to 22 APR 2021

NE-2, 25 MAR 2021 to 22 APR 2021