

VORTAC RBV <b>113.8</b> Chan <b>85</b>	APP CRS <b>288°</b>	Rwy Idg <b>3975</b> TDZE <b>118</b> Apt Elev <b>118</b>
--	------------------------	---

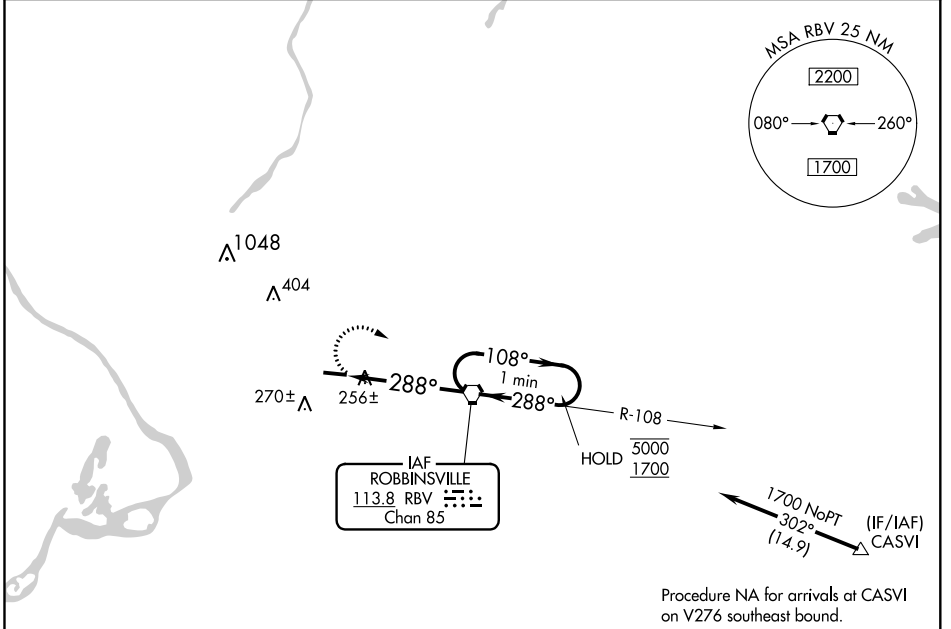
# VOR RWY 29

TRENTON-ROBBINSVILLE (N87)

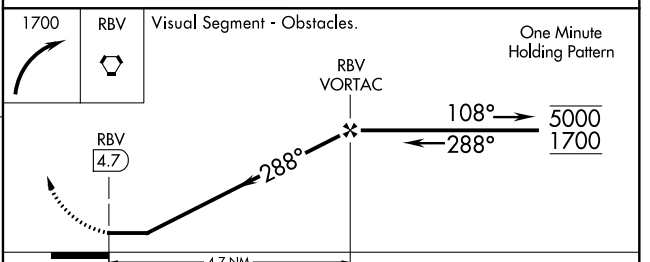
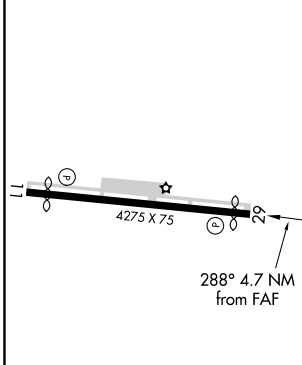
**Procedure NA at night.**  
**NA** Rwy 29 helicopter visibility reduction below 1 SM NA.  
 Use Wrightstown altimeter setting.

**MISSED APPROACH:** Climbing right turn to 1700 direct RBV VORTAC and hold.

MC GUIRE APP CON <b>126.475 363.8</b>	UNICOM <b>123.0 (CTAF)</b>	<b>123.3 0</b>
--	-------------------------------	----------------



ELEV 118	TDZE 118
----------	----------



MIRL Rwy 11-29 0	FAF to MAP 4.7 NM					
Knots	60	90	120	150	180	
Min:Sec	4:42	3:08	2:21	1:53	1:34	
CATEGORY	A		B		C	D
S-29	620-1 502 (600-1)		620-1 3/8 502 (600-1 3/8)			
CIRCLING	680-1 562 (600-1)		680-1 1/2 562 (600-1 1/2)		680-2 562 (600-2)	

NE-2, 25 MAR 2021 to 22 APR 2021

NE-2, 25 MAR 2021 to 22 APR 2021