

RNAV (GPS) RWY 9

HENDERSON CITY-COUNTY (E.H.R.)

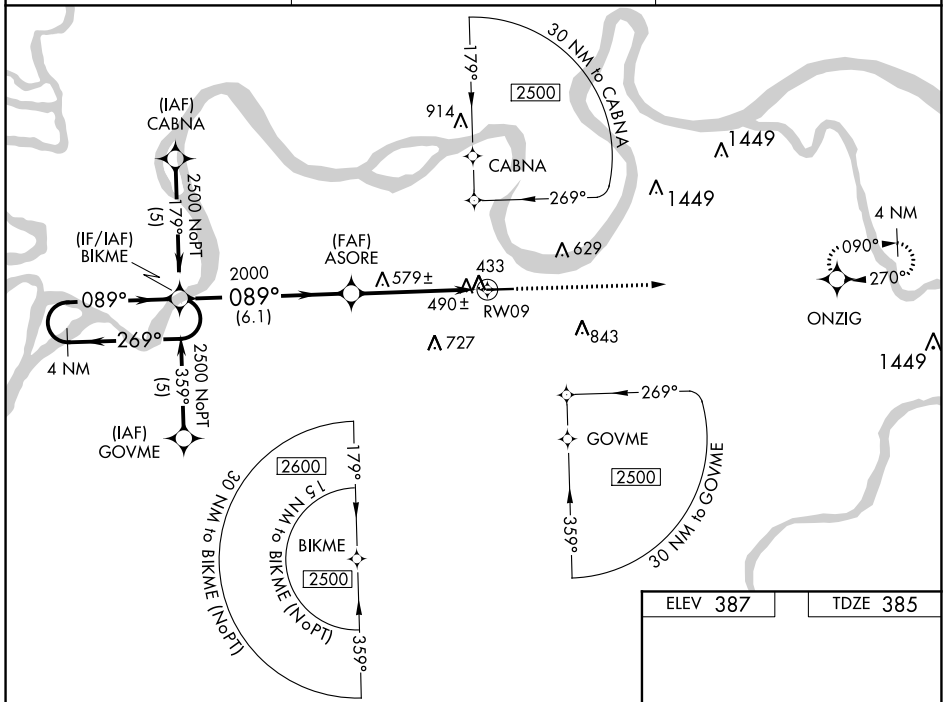
| | | | |
|--|------------------------|-----------------------------|---|
| WAAS CH 97709 W09A | APP CRS 089° | Rwy Idg TDZE Apt Elev | 5503 385 387 |
|--|------------------------|-----------------------------|---|

RNP APCH.

⚠ For uncompensated Baro-VNAV systems, LNAV/VNAV NA below -15°C or above 48° C. Rwy 9 helicopter visibility reduction below 3/4 SM NA. Baro-VNAV and VDP NA when using Evansville altimeter setting. When local altimeter setting not received, use Evansville climeter setting and increase all DA 41 feet and all MDA 60 feet and LPV all Cats, LNAV/VNAV all Cats and LNAV Cats C/D visibilities 1/4 mile.

MISSED APPROACH:
Climb to 2500 direct ONZIG and hold.

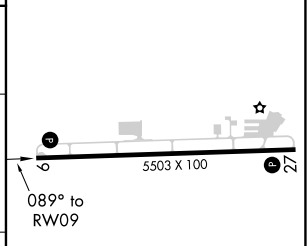
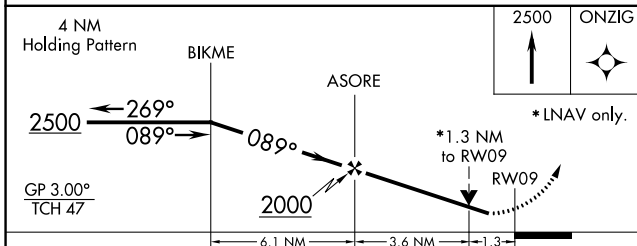
| | | |
|---------------------------|--|--|
| AWOS-3PT 118.85 | EVANSVILLE APP CON * 124.025 257.8 | UNICOM 122.8 (CTAF) 0 |
|---------------------------|--|--|



SE-1, 25 MAR 2021 to 22 APR 2021

SE-1, 25 MAR 2021 to 22 APR 2021

| | |
|----------|----------|
| ELEV 387 | TDZE 385 |
|----------|----------|



| CATEGORY | A | B | C | D |
|--------------|---------------------------|---------------------------|---------------------------|---------------------------|
| LPV DA | 694-1 309 (400-1) | | | |
| LNAV/VNAV DA | 774-1 1/4 389 (400-1 1/4) | | | |
| LNAV MDA | 840-1 455 (500-1) | 840-1 3/8 455 (500-1 3/8) | 840-1 1/2 455 (500-1 1/2) | 840-1 1/2 455 (500-1 1/2) |

REIL Rwy 9 and 27 **0**
MIRL Rwy 9-27 **0**