

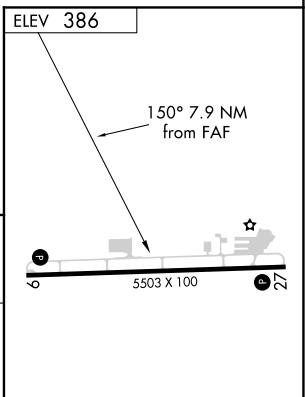
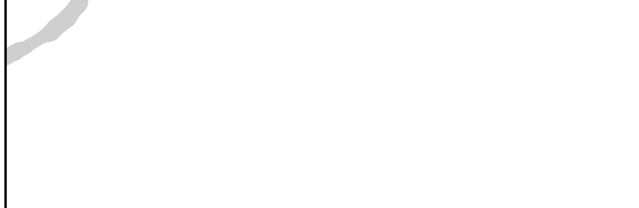
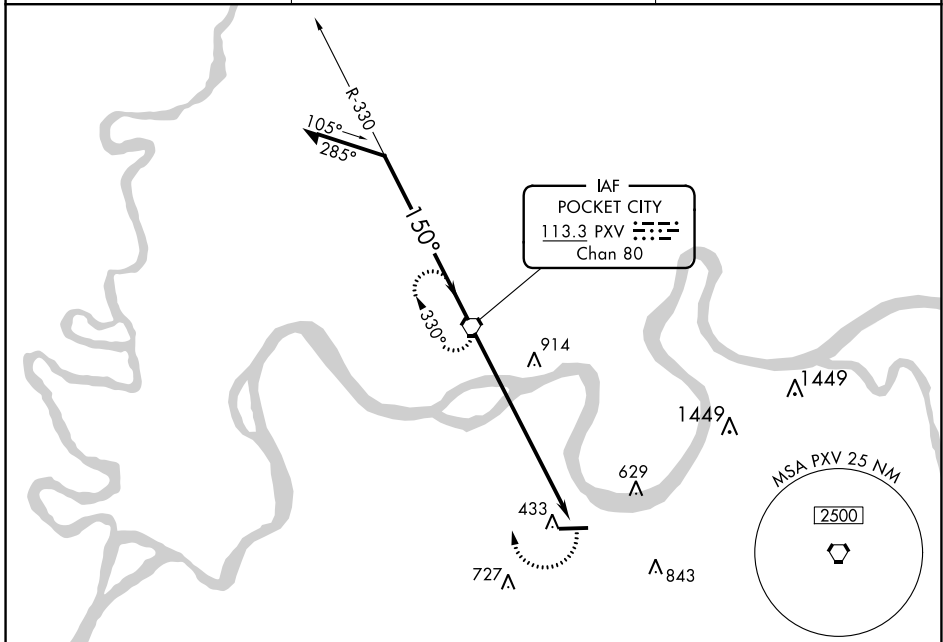
VORTAC PXV 113.3 Chan 80	APP CRS 150°	Rwy Idg TDZE Apt Elev	N/A N/A 386
--	------------------------	-----------------------------	--

VOR-A

HENDERSON CITY-COUNTY (EHR)

▲ NA If local altimeter setting not received, use Evansville altimeter setting and increase all MDA's 80 feet. MISSED APPROACH: Climbing right turn to 2100 direct PXV VORTAC and hold.

AWOS-3PT 118.85	EVANSVILLE APP CON ★ 124.025 257.8	UNICOM 122.8 (CTAF) 0
---------------------------	--	--



CATEGORY	A	B	C	D	FAF to MAP 7.9 NM					
	920-1	534 (600-1)	920-1½ 534 (600-1½)	940-2 554 (600-2)	Knots	60	90	120	150	180
CIRCLING					Min:Seq	7:54	5:16	3:57	3:10	2:38

HENDERSON, KENTUCKY	HENDERSON CITY-COUNTY (EHR)
Amdt 10 23JAN03	VOR-A

SE-1, 25 MAR 2021 to 22 APR 2021

SE-1, 25 MAR 2021 to 22 APR 2021