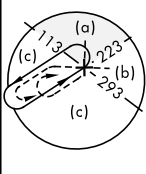
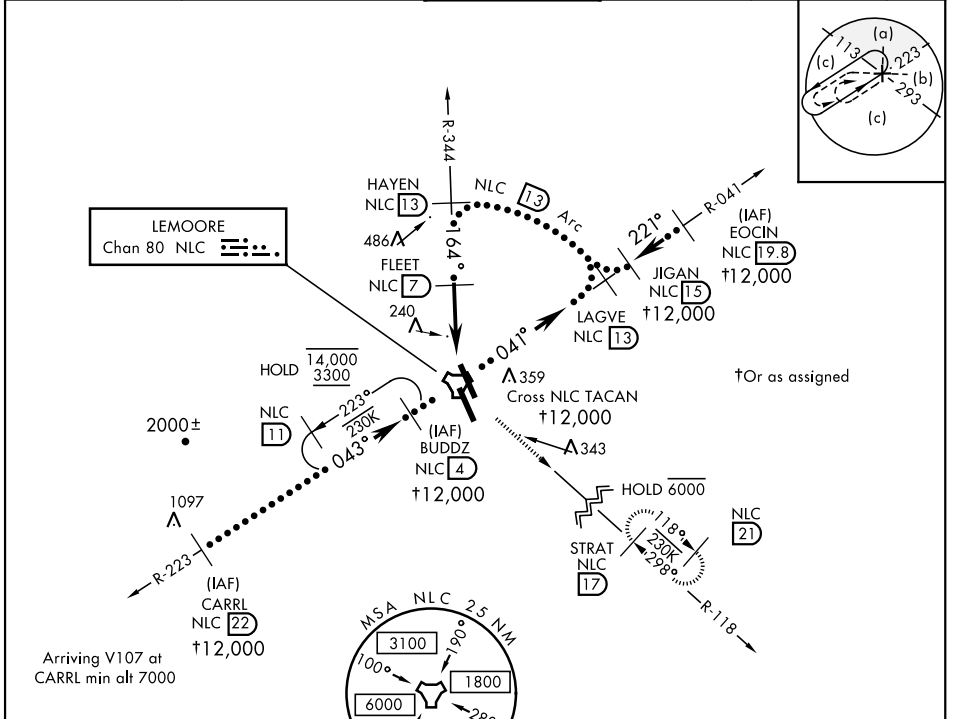


HI-TACAN RWY 14L

TACAN NLC Chan 80	APCH CRS 164°	Rwy Idg 13,502 TDZE 219 Arpt Elev 228	AL-5067 [USN]	LEMOORE NAS (REEVES FIELD) (KNLC)
-----------------------------	-------------------------	--	---------------	-----------------------------------

MISSED APPROACH: Climb to 700 then climbing left turn to 2000 via heading 142°, intercept NLC R-118 to STRAT and hold.

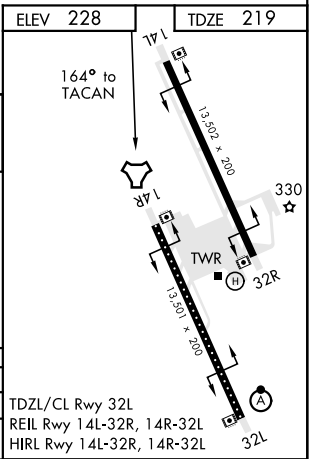
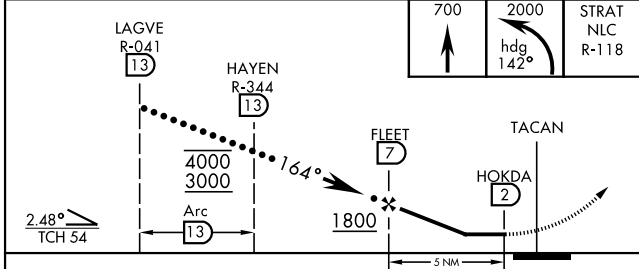
ATIS★ 121.575 327.15	LEMOORE APP CON 124.1N 118.15S 269.025	LEMOORE TOWER ★ 128.3 340.2	GND CON 121.65 305.2	CLNC DEL 124.1 371.9	ASR/PAR
--------------------------------	--	---------------------------------------	--------------------------------	--------------------------------	---------



SW-2, 25 MAR 2021 to 22 APR 2021

SW-2, 25 MAR 2021 to 22 APR 2021

EMERG SAFE ALT 100 NM 16,500



CATEGORY	C	D	E
S-14L	560/55	340	(400-1)
C CIRCLING	680-1½ 451 (500-1½)	780-2	551 (600-2)

TDZL/CL Rwy 32L
REIL Rwy 14L-32R, 14R-32L
HIRL Rwy 14L-32R, 14R-32L

HI-TACAN RWY 14L