

HI-TACAN RWY 14R

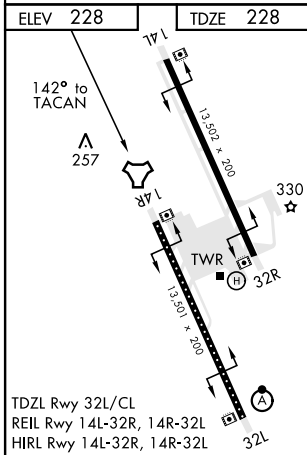
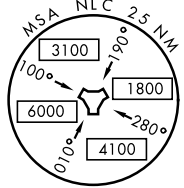
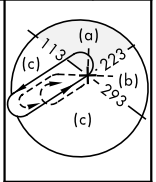
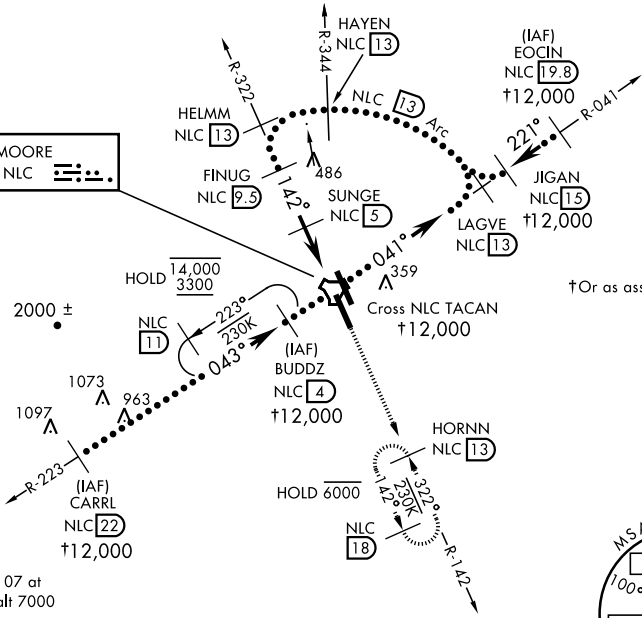
TACAN NLC Chan 80	APCH CRS 142°	Rwy ldg 13,501 TDZE 228 Arprt Elev 228	AL-5067 [USN]	LEMOORE NAS (REEVES FIELD) (KNLC)
-----------------------------	-------------------------	---	---------------	-----------------------------------

MISSED APPROACH: Climb to 3000 via R-142 to HORNN and hold.

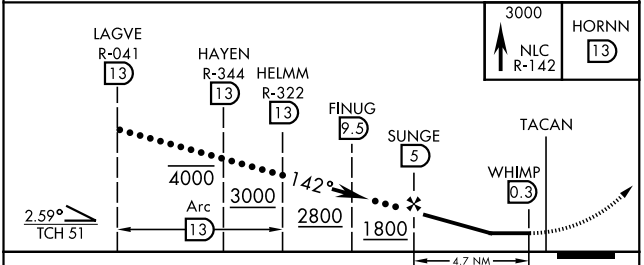
ATIS★ 121.575 327.15	LEMOORE APP CON 124.1N 118.15 S 269.025	LEMOORE TOWER ★ 128.3 340.2	GND CON 121.65 305.2	CLNC DEL 124.1 371.9	ASR/ PAR
--------------------------------	---	---------------------------------------	--------------------------------	--------------------------------	-------------

Simultaneous approaches authorized.

LEMOORE
Chan 80 NLC



EMERG SAFE ALT 100 NM 16,500



CATEGORY	C	D	E
S-14R	560/55	331	(400-1)
C CIRCLING	680-1½ 451 (500-1½)	780-2	551 (600-2)

HI-TACAN RWY 14R

SW-2, 25 MAR 2021 to 22 APR 2021

SW-2, 25 MAR 2021 to 22 APR 2021