

# HI-TACAN Y RWY 32L

TACAN NLC Chan <b>80</b>	APCH CRS <b>322°</b>	Rwy ldg TDZE Arprt Elev <b>13,501</b> <b>227</b> <b>228</b>
-----------------------------	-------------------------	---

AL-5067 [USN]

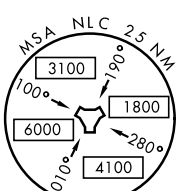
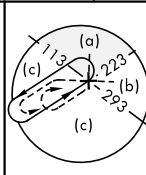
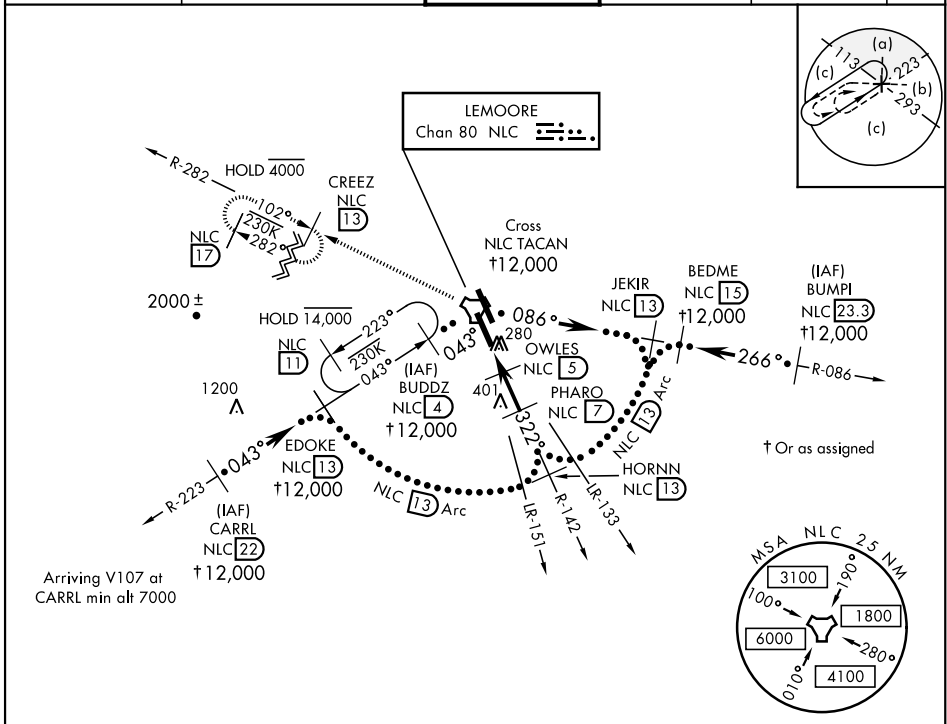
LEMOORE NAS (REEVES FIELD) (KNLC)

**V** \* When ALS inop, increase CAT CDE RVR to 55 and vis to 1 mile.



MISSED APPROACH: Climb to 3000 via R-142 to NLC TACAN, then via R-282 to CREEZ and hold.

ATIS* <b>121.575 327.15</b>	LEMOORE APP CON <b>124.1N 118.15 S 269.025</b>	LEMOORE TOWER* <b>128.3 340.2</b>	GND CON <b>121.65 305.2</b>	CLNC DEL <b>124.1 371.9</b>	ASR/PAR
--------------------------------	---	--------------------------------------	--------------------------------	--------------------------------	---------



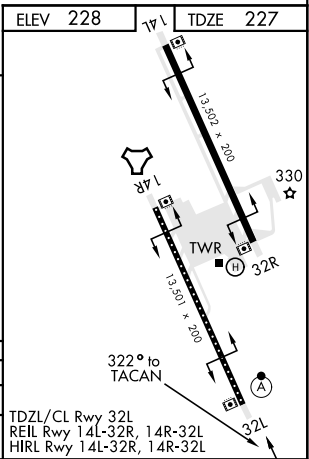
SW-2, 25 MAR 2021 to 22 APR 2021

SW-2, 25 MAR 2021 to 22 APR 2021

EMERG SAFE ALT 100 NM 16,500



CATEGORY	C	D	E
S-32L *	540/24	312 (400-½)	
CIRCLING	680-1½ 451 (500-1½)	780-2 551 (600-2)	



# HI-TACAN Y RWY 32L