

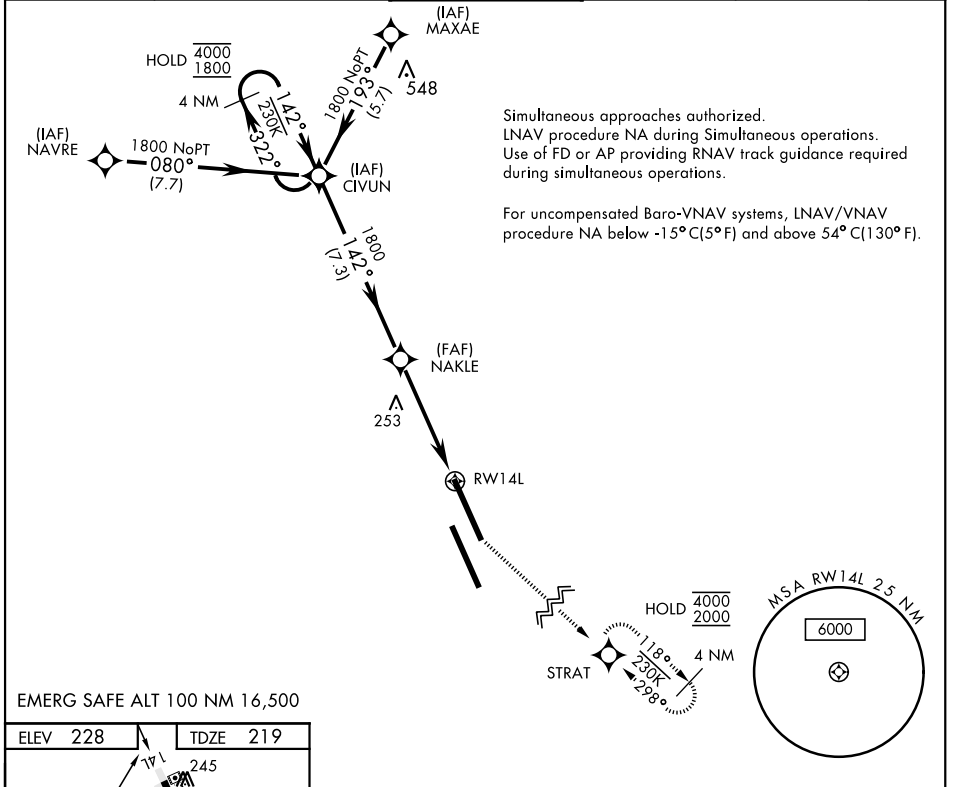
# RNAV (GPS) RWY 14L

WAAS Chan <b>70209</b> <b>W14A</b>	APCH CRS <b>142°</b>	Rwy Idg <b>13,502</b> TDZE <b>219</b> Arprt Elev <b>228</b>
--	-------------------------	---

AL-5067 [USN]

LEMOORE NAS (REEVES FIELD) (KNLC)

DME/DME RNP-0.3 NA		MISSED APPROACH: Climb to 1200, then climb left turn to 2000 direct STRAT and hold.			
ATIS ★ <b>121.575 327.15</b>	LEMOORE APP CON <b>124.1N 118.15S 269.025</b>	LEMOORE TOWER ★ <b>128.3 340.2</b>	GND CON <b>121.65 305.2</b>	CLNC DEL <b>124.1 371.9</b>	ASR/PAR



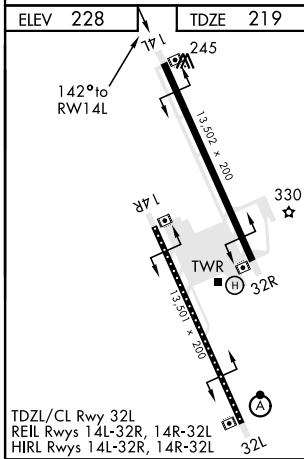
Simultaneous approaches authorized.  
LNAV procedure NA during Simultaneous operations.  
Use of FD or AP providing RNAV track guidance required during simultaneous operations.

For uncompensated Baro-VNAV systems, LNAV/VNAV procedure NA below -15°C(5°F) and above 54°C(130°F).

SW-2, 25 MAR 2021 to 22 APR 2021

SW-2, 25 MAR 2021 to 22 APR 2021

EMERG SAFE ALT 100 NM 16,500



ELEV 228	TDZE 219				
		1200	2000	STRAT	
		TLNAV Only			
GP 3.00° TCH 54		4.8 NM			
CATEGORY	A	B	C	D	
LPV DA		420/40	200	(200-¾)	
LNAV/VNAV DA		470/40	250	(300-¾)	
LNAV MDA	520/55	300	(300-1)	520/45	300 (300-7/8)
<b>C</b> CIRCLING	680-1	451	(500-1)	680-1½	780-2 451 (500-1½)

# RNAV (GPS) RWY 14L