

RNAV (GPS) RWY 32L

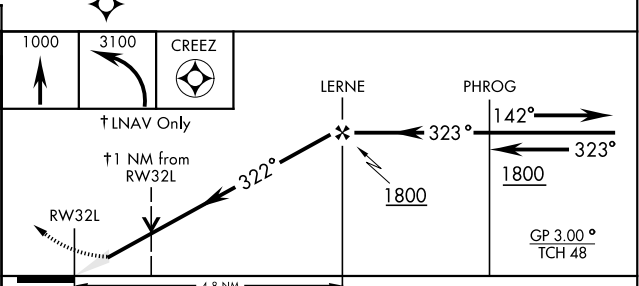
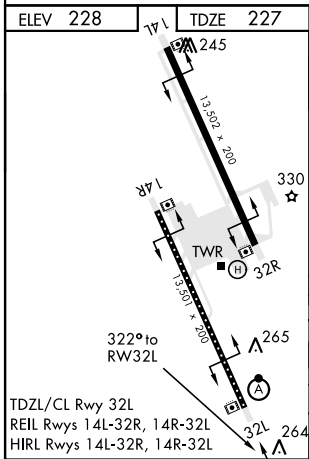
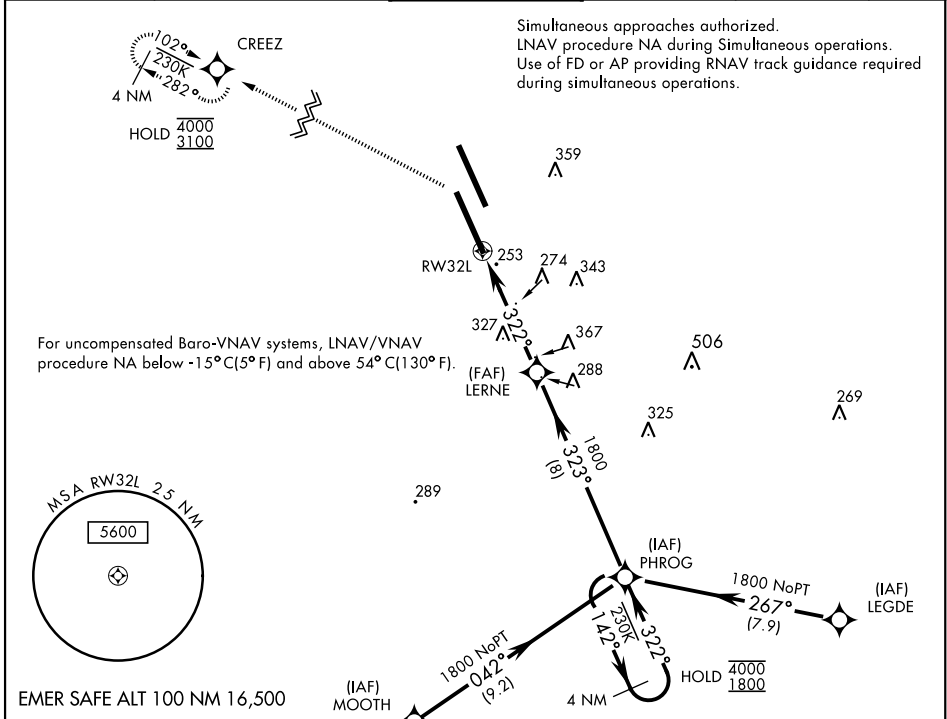
WAAS Chan 50085 W32A	APCH CRS 322°	Rwy Idg 13,501 TDZE 227 Arpt Elev 228
--	-------------------------	--

AL-5067 [USN]

LEMOORE NAS (REEVES FIELD) (KNLC)

<p>▼ * When ALS inop, increase CAT ABCD RVR to 40 and vis to ¾ mile. ** When ALS inop, increase RVR to 55 and vis to 1 mile. DME/DME RNP-0.3 NA</p>	<p>ALSIF-2</p>	<p>MISSED APPROACH: Climb to 1000, then climbing left turn to 3100 direct CREEZ and hold.</p>
---	----------------	---

<p>ATIS ★ 121.575 327.15</p>	<p>LEMOORE APP CON 124.1N 118.15S 269.025</p>	<p>LEMOORE TOWER ★ 128.3 340.2</p>	<p>GND CON 121.65 305.2</p>	<p>CLNC DEL 124.1 371.9</p>	<p>ASR/PAR</p>
---	--	---	--	--	----------------



CATEGORY	A	B	C	D
LPV DA *	428/18 200 (200-½)			
LNAV/VNAV DA *	478/18	250 (300-½)	479/18 251 (300-½)	
LNAV MDA**	600/24 372 (400-½)	600/35 372 (400-½)		780-2 551 (600-2)
CIRCLING	680-1 451 (500-1)	680-1½ 451 (500-½)		780-2 551 (600-2)

RNAV (GPS) RWY 32L

SW-2, 25 MAR 2021 to 22 APR 2021

SW-2, 25 MAR 2021 to 22 APR 2021