

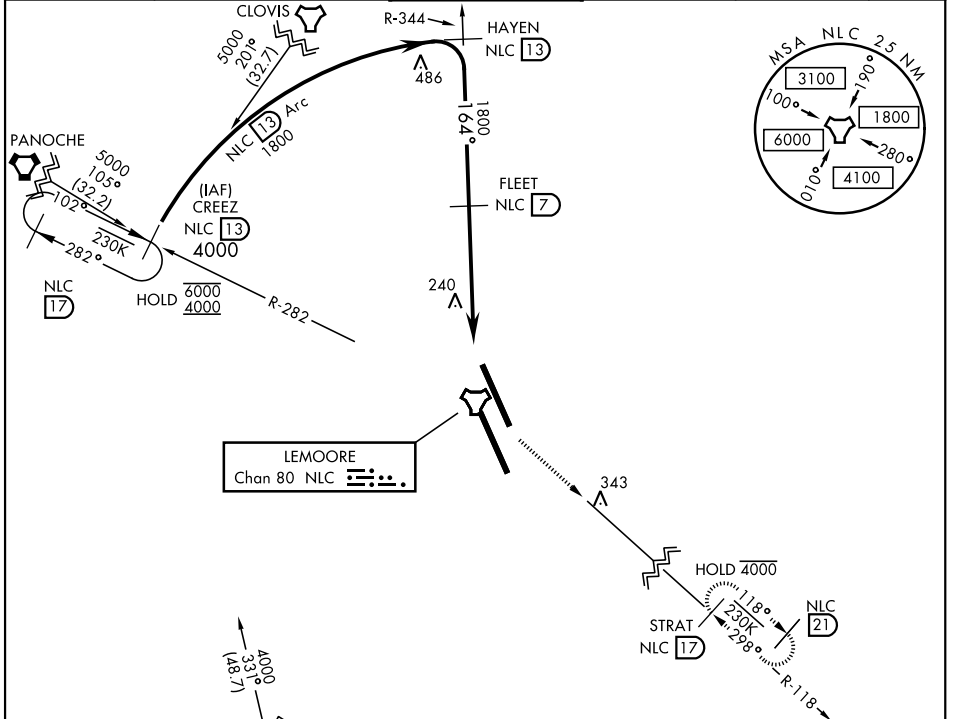
# TACAN RWY 14L

TACAN Chan <b>80</b>	APCH CRS <b>164°</b>	Rwy Idg <b>13,502</b> TDZE <b>219</b> Arprt Elev <b>228</b>
-------------------------	-------------------------	---

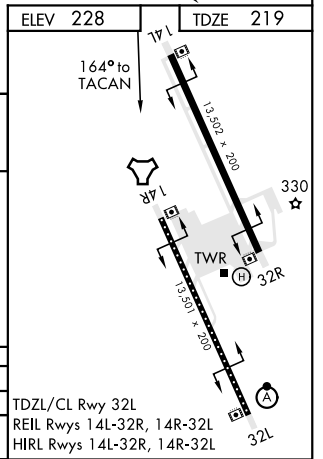
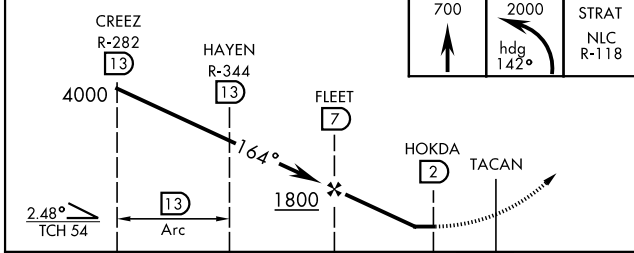
AL-5067 [USN]

LEMOORE NAS (REEVES FIELD) (KNLC)

<p><b>▼</b> MISSED APPROACH: Climb to 700 then climbing left turn to 2000 via heading 142°, intercept NLC TACAN R-118 to STRAT and hold.</p>					
ATIS ★ <b>121.575 327.15</b>	LEMOORE APP CON <b>124.1N 118.15S 269.025</b>	LEMOORE TOWER ★ <b>128.3 340.2</b>	GND CON <b>121.65 305.2</b>	CLNC DEL <b>124.1 371.9</b>	ASR/PAR



EMERG SAFE ALT 100 NM 16,500



CATEGORY	A	B	C	D
S-14L	560/55		340	(400-1)
CRCLING	680-1	451 (500-1)	680-1½ 451 (500-1½)	780-2 551 (600-2)

TDZL/CL Rwy 32L  
REIL Rwys 14L-32R, 14R-32L  
HIRL Rwys 14L-32R, 14R-32L

# TACAN RWY 14L

SW-2, 25 MAR 2021 to 22 APR 2021

SW-2, 25 MAR 2021 to 22 APR 2021