

# TACAN RWY 14R

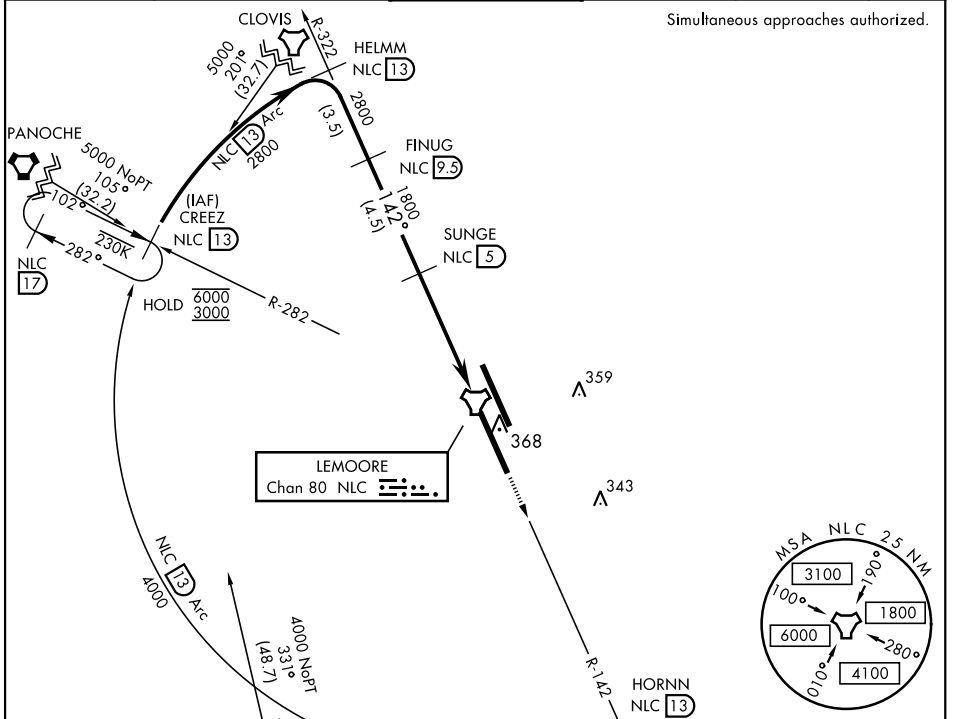
TACAN NLC Chan <b>80</b>	APCH CRS <b>142°</b>	Rwy Idg <b>13,501</b> TDZE <b>228</b> Arprt Elev <b>228</b>
-----------------------------	-------------------------	---

AL-5067 [USN]

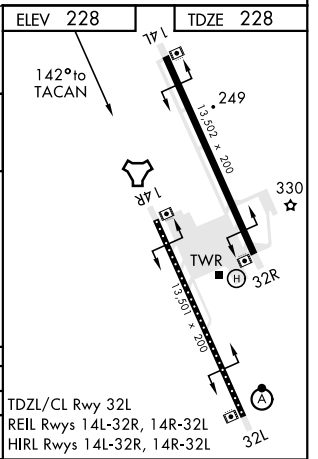
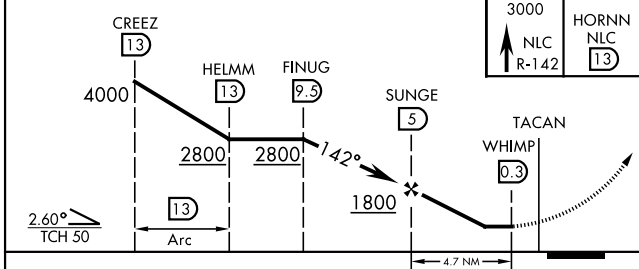
LEMOORE NAS (REEVES FIELD) (KNLC)

<p><b>▼</b> MISSED APPROACH: Climb to 3000 via R-142 via R-142 to HORNN, then arc SW of NLC TACAN via the 13 DME Arc to CREEZ and hold.</p>					
<p>ATIS ★ <b>121.575 327.15</b></p>	<p>LEMOORE APP CON <b>124.1N 118.15S 269.025</b></p>	<p>LEMOORE TOWER ★ <b>128.3 340.2</b></p>	<p>GND CON <b>121.65 305.2</b></p>	<p>CLNC DEL <b>124.1 371.9</b></p>	<p>ASR/PAR</p>

Simultaneous approaches authorized.



EMERG SAFE ALT 100 NM 16,500	AVENAL (AVE transition requires VOR)	ELEV 228	TDZE 228
------------------------------	--------------------------------------	----------	----------



CATEGORY	A	B	C	D
S-14R	560/55		331 (400-1)	
CIRCLING	680-1	451 (500-1)	680-1½ 451 (500-1½)	780-2 551 (600-2)

TDZL/CL Rwy 32L  
REIL Rwys 14L-32R, 14R-32L  
HIRL Rwys 14L-32R, 14R-32L

# TACAN RWY 14R

SW-2, 25 MAR 2021 to 22 APR 2021

SW-2, 25 MAR 2021 to 22 APR 2021