

TACAN RWY 32L

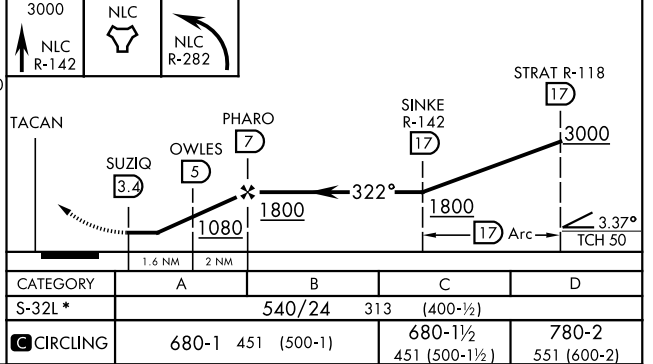
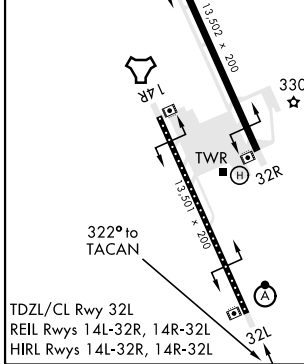
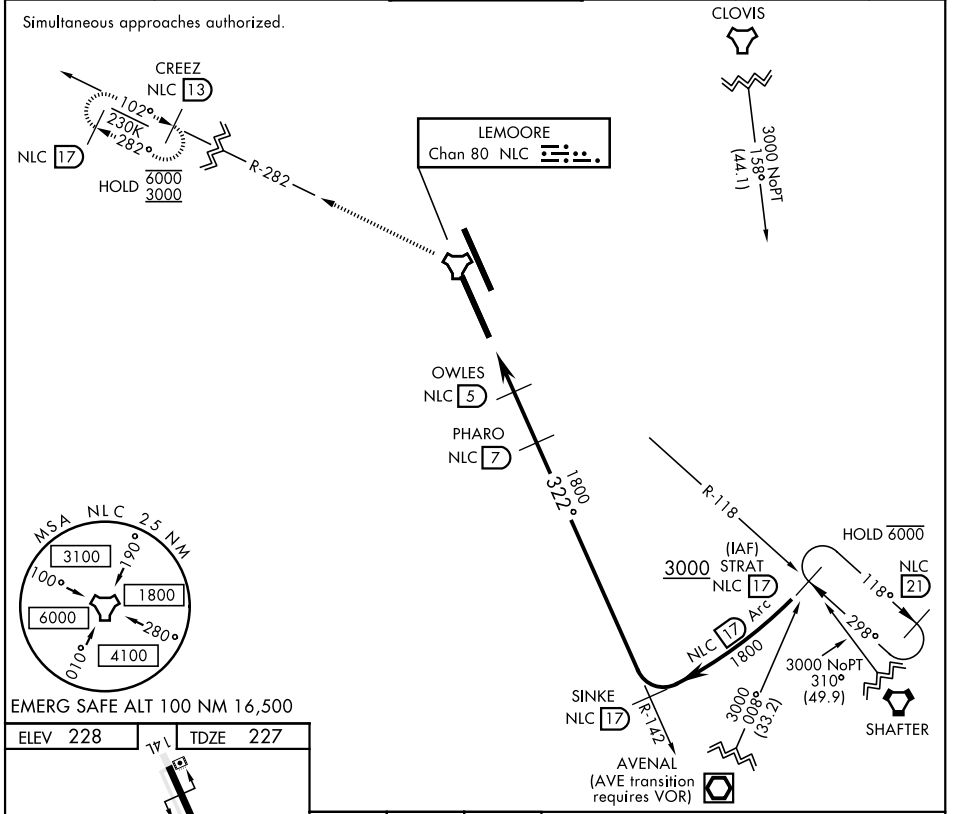
TACAN NLC Chan 80	APCH CRS 322°	Rwy Idg 13,501 TDZE 227 Arprt Elev 228
--------------------------	----------------------	---

AL-5067 [USN]

LEMOORE NAS (REEVES FIELD) (KNLC)

<p>⚠ *When ALS inop, increase CAT ABCD RVR to 55 and vis to 1 mile.</p>	<p>ALS F-2</p>	<p>MISSED APPROACH: Climb to 3000 via R-142 to NLC TACAN, then via R-282 to CREEZ and hold.</p>
---	----------------	---

<p>ATIS ★</p> <p>121.575 327.15</p>	<p>LEMOORE APP CON</p> <p>N124.1 S118.15 269.025</p>	<p>LEMOORE TOWER ★</p> <p>128.3 340.2</p>	<p>GND CON</p> <p>121.65 305.2</p>	<p>CLNC DEL</p> <p>124.1 371.9</p>	<p>ASR/PAR</p>
--	---	--	---	---	----------------



TACAN RWY 32L

SW-2, 25 MAR 2021 to 22 APR 2021

SW-2, 25 MAR 2021 to 22 APR 2021