


VOR TBN	APP CRS	Rwy Idg	<b>5535</b>
<b>110.0</b>	<b>138°</b>	TDZE	<b>1158</b>
		Apt Elev	<b>1160</b>

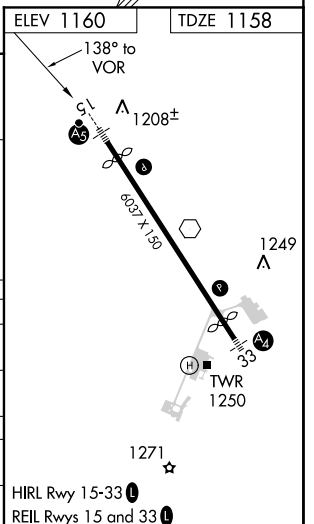
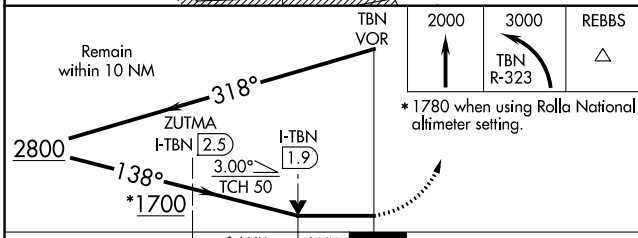
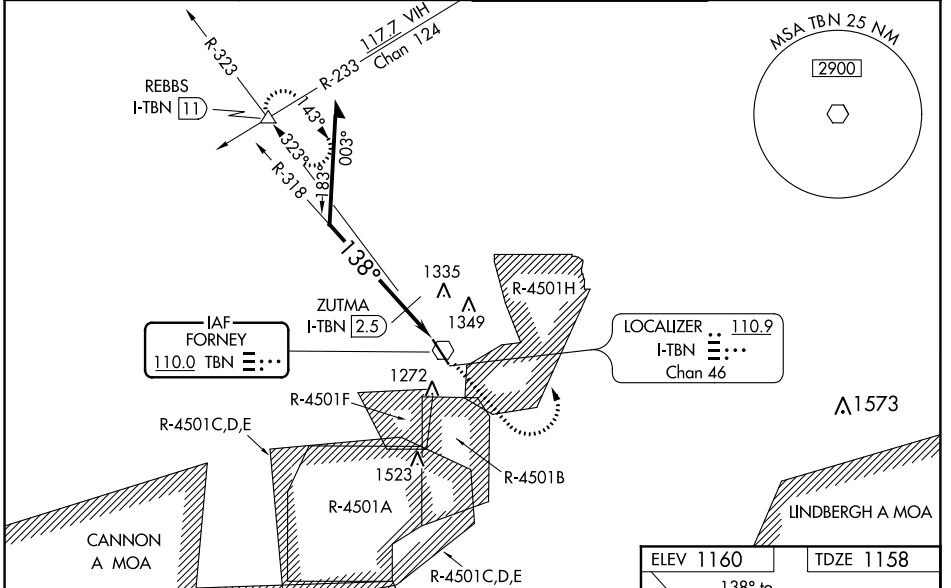
# VOR RWY 15

WAYNESVILLE-ST ROBERT RGNL FORNEY FIELD (TBN)

**⚠** Procedure NA when R-4501B or R-4501H in use. Inop table does not apply to S-15 Cat A and B or to ZUTMA fix minimums. Circling NA west of Rwy 15-33. When local altimeter setting not received, use Rolla National altimeter setting and increase all MDAs 80 feet and increase S-15 visibility Cats C/D 1/4 SM and Circling Cat C visibility 1/2 SM. Inop table does not apply to Cats A/B when using Rolla National altimeter setting. For inop ALS when using Rolla National altimeter setting increase S-15 Cats C/D visibility to 1/4 SM. For inop ALS when using Rolla National altimeter setting increase S-15 ZUTMA fix minimums Cats C/D visibility to 1/2 SM. # DME from I-TBN LOC/DME.

**MALSR**  
 MISSED APPROACH: Climb to 2000 then climbing left turn to 3000 on TBN VOR R-323 to REBBS INT/I-TBN LOC/DME 11 DME and hold.

D-ATIS <b>118.7 229.4</b>	KANSAS CITY CENTER <b>128.35 284.675</b>	FORNEY TOWER ★ <b>125.4 (CTAF) 0 268.7</b>	GND CON <b>123.75 256.8</b>
------------------------------	---	---	--------------------------------



CATEGORY	A	B	C	D
S-15	1700-1	542 (600-1)	1700-1 1/8	542 (600-1 1/8)
<b>C</b> CIRCLING	1700-1	540 (600-1)	1700-1 5/8	1720-2
			540 (600-1 5/8)	560 (600-2)
ZUTMA FIX MINIMUMS #				
S-15	1520-1		362 (400-1)	
<b>C</b> CIRCLING	1580-1	1660-1	1660-1 1/2	1720-2
	420 (500-1)	500 (500-1)	500 (500-1 1/2)	560 (600-2)

# VOR RWY 15

NC-3, 25 MAR 2021 to 22 APR 2021

NC-3, 25 MAR 2021 to 22 APR 2021