

VOR TBN 110.0	APP CRS 329°	Rwy Idg TDZE Apt Elev	5510 1153 1160
-------------------------	------------------------	-----------------------------	---

VOR RWY 33

WAYNESVILLE-ST ROBERT RGNL FORNEY FIELD (T'BN)

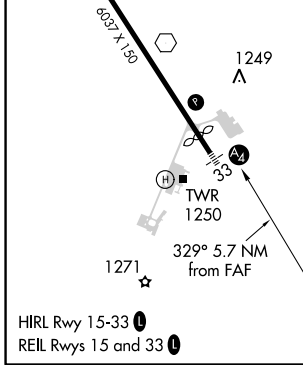
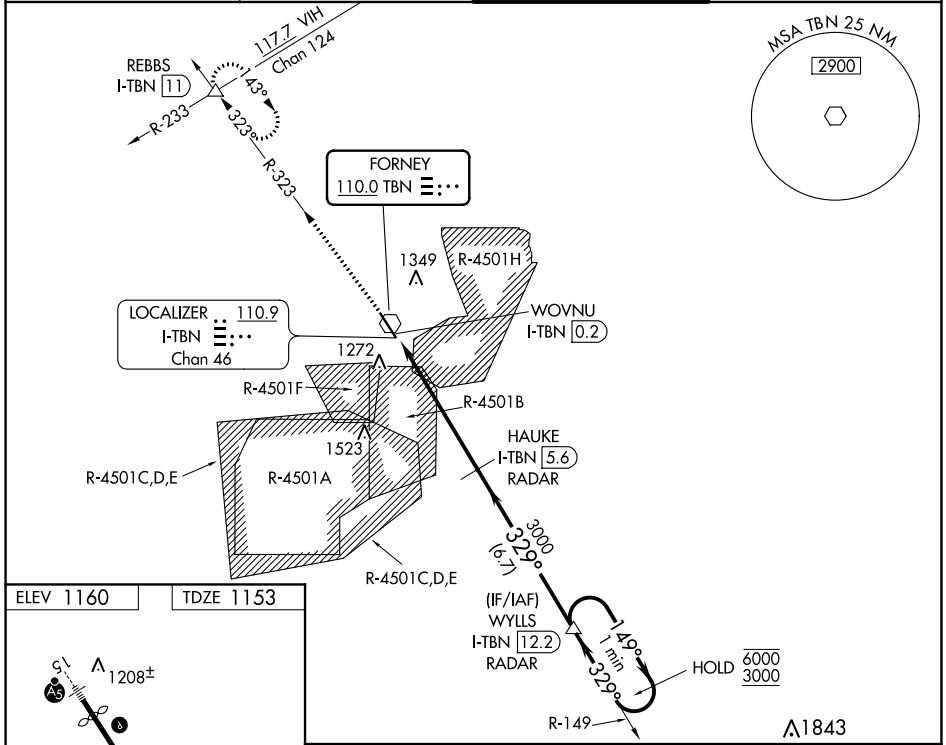
DME or RADAR required. RADAR required for procedure entry.

⚠ When local altimeter not received, use Rolla National altimeter setting and increase all MDAs 80 feet. Increase S-33 Cats C/D visibility to 1 1/4 SM. Procedure NA when R-4501B or R-4501H in use. Circling NA west of Rwy 15-33. Rwy 33 helicopter visibility reduction below 3/4 SM NA. Inop table does not apply to Cats A and B. For inop ALS, increase Cats C and D visibility to 1 3/8 SM. Inop table does not apply to Cats A and B when using Rolla National altimeter setting.

MALS

MISSED APPROACH: Climb to 3000 on TBN VOR R-323 to REBBS INT/I-TBN LOC/DME 11 DME and hold.

D-ATIS 118.7 229.4	KANSAS CITY CENTER 128.35 284.675	FORNEY TOWER ★ 125.4 (CTAF) 0 268.7	GND CON 123.75 256.8
------------------------------	---	---	--------------------------------



3000 TBN R-323 REBBS I-TBN DME ANTENNA WOVNU I-TBN 0.2 HAUKE I-TBN 5.6 RADAR WYLLS I-TBN 12.2 RADAR One Minute Holding Pattern 3000 329° 149° 6000 3000 3.00° TCH 36 1.3 NM 4.4 NM 6.7 NM	A	B	C	D
	CATEGORY S-33 1600-1 440 (500-1)	1600-1 500 (500-1)	1660-1 500 (500-1)	1660-1 1/2 500 (500-1 1/2)

NC-3, 25 MAR 2021 to 22 APR 2021

NC-3, 25 MAR 2021 to 22 APR 2021