

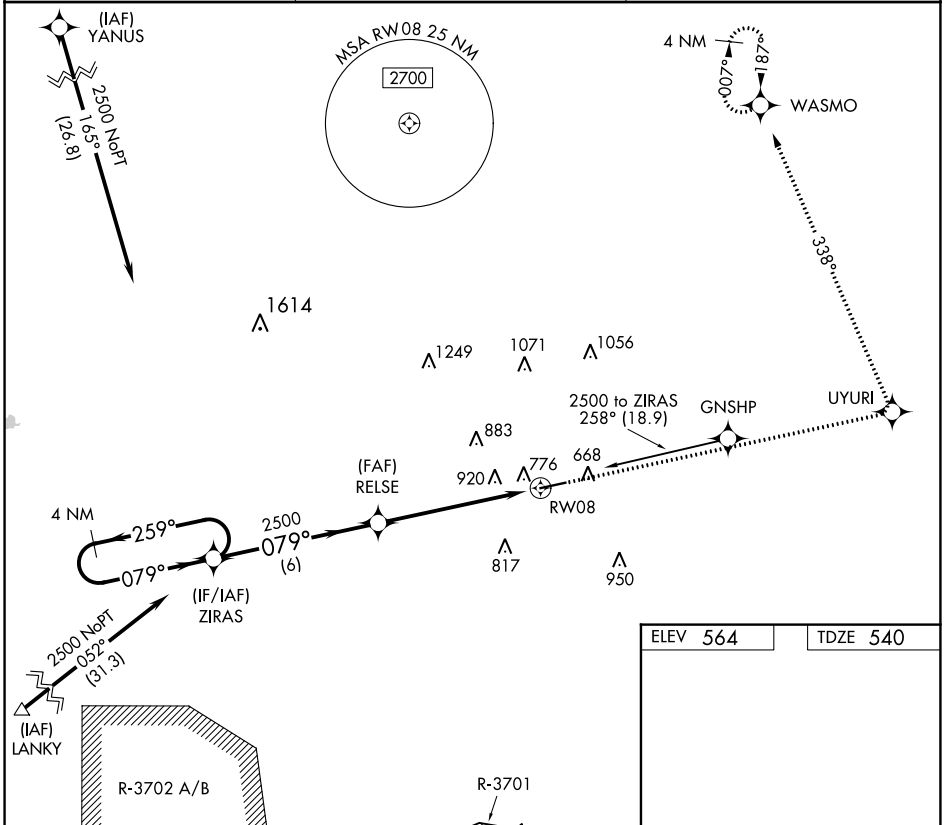
APP CRS	Rwy Idg	5505
079°	TDZE	540
	Apt Elev	564

RNAV (GPS) RWY 8

HOPKINSVILLE-CHRISTIAN COUNTY (HVC)

RNP APCH.	MISSED APPROACH: Climb to 3000 direct UYURI and left turn via 338° track to WASMO and hold.
<p>▼ Rwy 8 helicopter visibility reduction below 1 SM NA. When local altimeter setting not received, use Clarksville altimeter setting and increase all MDA 40 feet. Procedure NA at night.</p> <p>▲ NA</p>	

AWOS-3 132.575	CAMPBELL APP CON 118.1 269.525	UNICOM 122.8 (CTAF) 0
--------------------------	--	---------------------------------



4 NM Holding Pattern		ZIRAS	RELSE	3000	UYURI	338° tr	WASMO
2500 ← 259°		→ 079°	2500	3.05°		RW08	
VGSI and descent angles not coincident (VGSI Angle 3.50/TCH 38).		6 NM		5.9 NM		0.5% UP → 5505 X 100	
CATEGORY	A	B	C	D		MIRL Rwy 8-26 0	
LNAV MDA	1220-1	680 (700-1)	1220-2	1220-2 1/4		REIL Rwy 8 and 26 0	
			680 (700-2)	680 (700-2 1/4)			

SE-1, 25 MAR 2021 to 22 APR 2021

SE-1, 25 MAR 2021 to 22 APR 2021