

NDB PLX 391	APP CRS 156°	Rwy Idg TDZE Apt Elev	3398 455 461
-----------------------	------------------------	-----------------------------	---

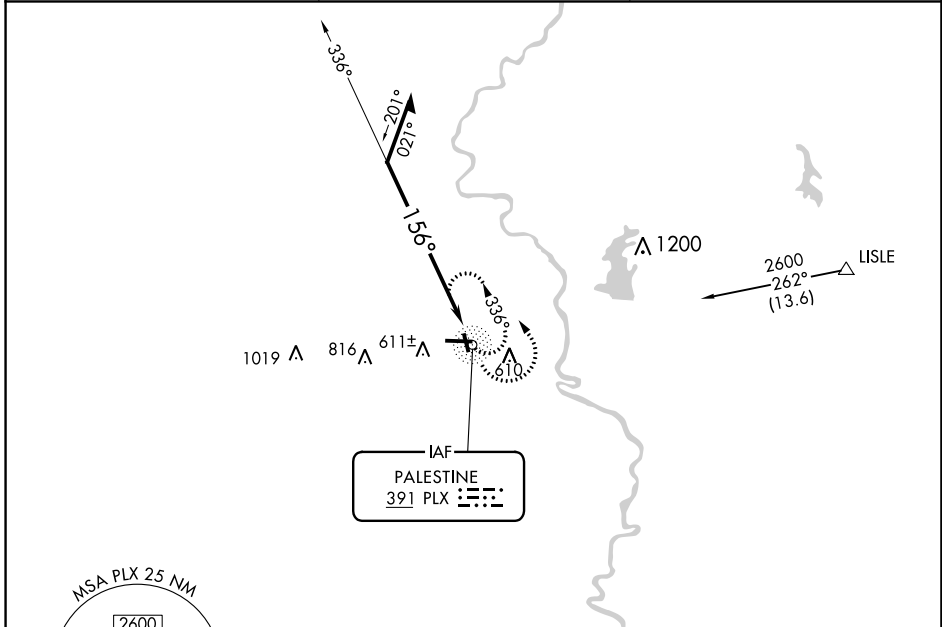
NDB RWY 17

CRAWFORD CO (RSV)

▼ When local altimeter setting not received, use Terre Haute Rgnl altimeter setting and increase all MDA 100 feet; increase S-17 Cat B visibility ¼ mile and Cats C/D visibility ½ mile, increase Circling Cat B visibility ¼ mile and Cats C/D visibility ½ mile. Helicopter visibility reduction below 1 SM NA. Rwy 17 Straight-in and Circling minimums NA at night.

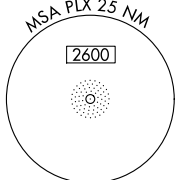
MISSED APPROACH:
Climbing left turn to 2200 in PLX NDB holding pattern.

AWOS-3 120.50	HULMAN APP CON 119.25 339.8	UNICOM 123.0 (CTAF) 0
-------------------------	---------------------------------------	---------------------------------

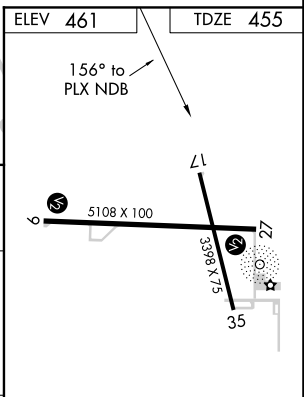
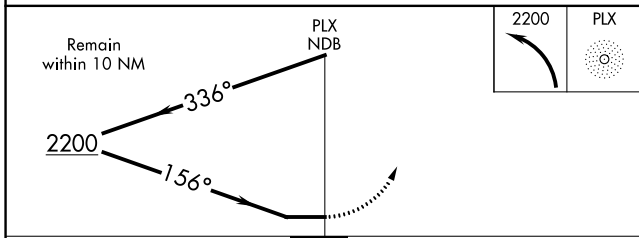


EC-3, 25 MAR 2021 to 22 APR 2021

EC-3, 25 MAR 2021 to 22 APR 2021



ELEV 461	TDZE 455
----------	----------



CATEGORY	A	B	C	D
S-17	1160-1	705 (700-1)	1160-2	705 (700-2)
C CIRCLING	1160-1	699 (700-1)	1160-2 699 (700-2)	1180-2¼ 719 (800-2¼)

REIL Rwy 9, 17 and 27 **0**
MIRL Rwy 9-27 and 17-35 **0**