

WAAS CH <b>69509</b> <b>W27A</b>	APP CRS <b>275°</b>	Rwy Idg <b>5108</b> TDZE <b>455</b> Apt Elev <b>461</b>
--	------------------------	---

# RNAV (GPS) RWY 27

CRAWFORD CO (RSV)

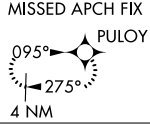
**▼** For uncompensated Baro-VNAV systems, LNAV/VNAV NA below -15°C (5°F) or above 54°C (130°F).  
**▲** DME/DME RNP-0.3 NA. When local altimeter setting not received, use Terre Haute Rgnl altimeter setting and increase all DA 89 feet and all MDA 100 feet; increase LPV all Cats visibility 1/8 mile, increase LNAV/VNAV all Cats visibility 3/8 mile, increase LNAV Cats C/D 1/4 mile and increase Circling Cats C/D 1/2 mile. Baro-VNAV and VDP NA when using Terre Haute Rgnl altimeter setting.

**MISSED APPROACH:**  
Climb to 3000 direct PULYO and hold.

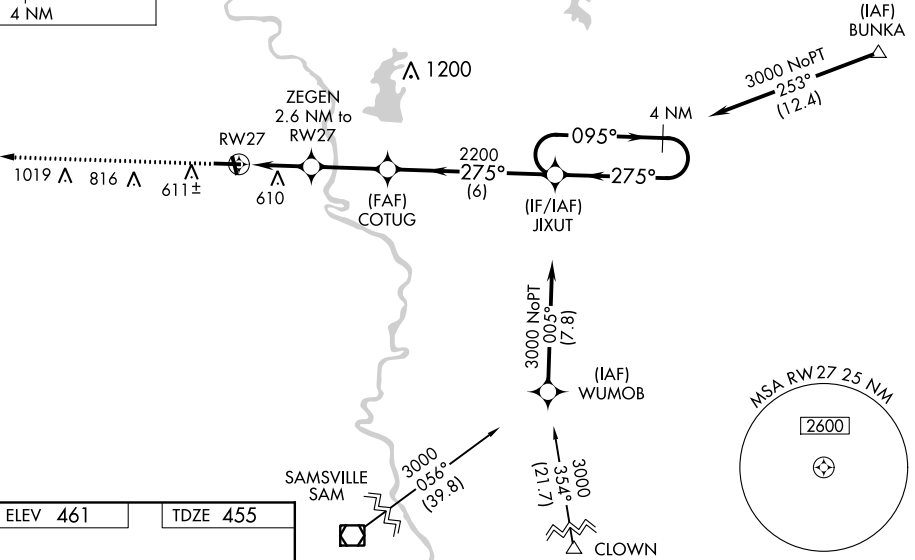
AWOS-3  
**120.50**

HULMAN APP CON  
**119.25 339.8**

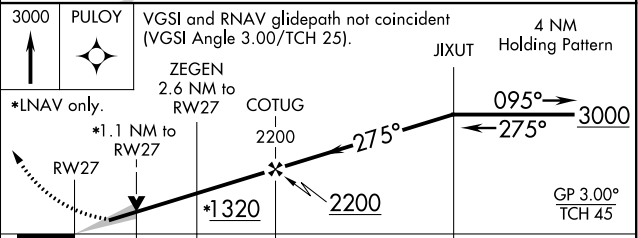
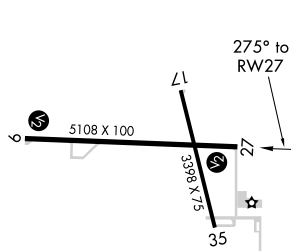
UNICOM  
**123.0 (CTAF) 0**



Procedure NA for arrivals at BUNKA on V243 northwest bound and on V221 eastbound.



ELEV 461 TDZE 455



CATEGORY	A	B	C	D
LPV DA	705-1		250 (300-1)	
LNAV/VNAV DA	845-1 1/4		390 (400-1 1/4)	
LNAV MDA	840-1 385 (400-1)		840-1 1/8 385 (400-1 1/8)	
<b>CIRCLING</b>	940-1 479 (500-1)	1080-1 619 (700-1)	1120-1 3/4 659 (700-1 3/4)	1180-2 1/4 719 (800-2 1/4)

REIL Rwy 17, 9 and 27 **0**  
MIRL Rwy 9-27 and 17-35 **0**

EC-3, 25 MAR 2021 to 22 APR 2021

EC-3, 25 MAR 2021 to 22 APR 2021