

WAAS CH 49109 W09A	APP CRS 095°	Rwy Idg TDZE 461 Apt Elev 461	5108
--	------------------------	---	-------------

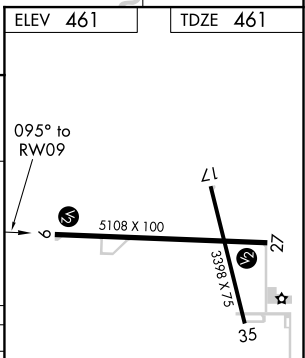
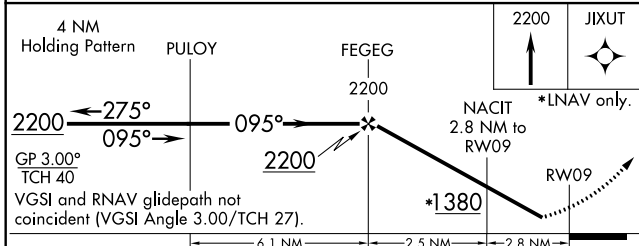
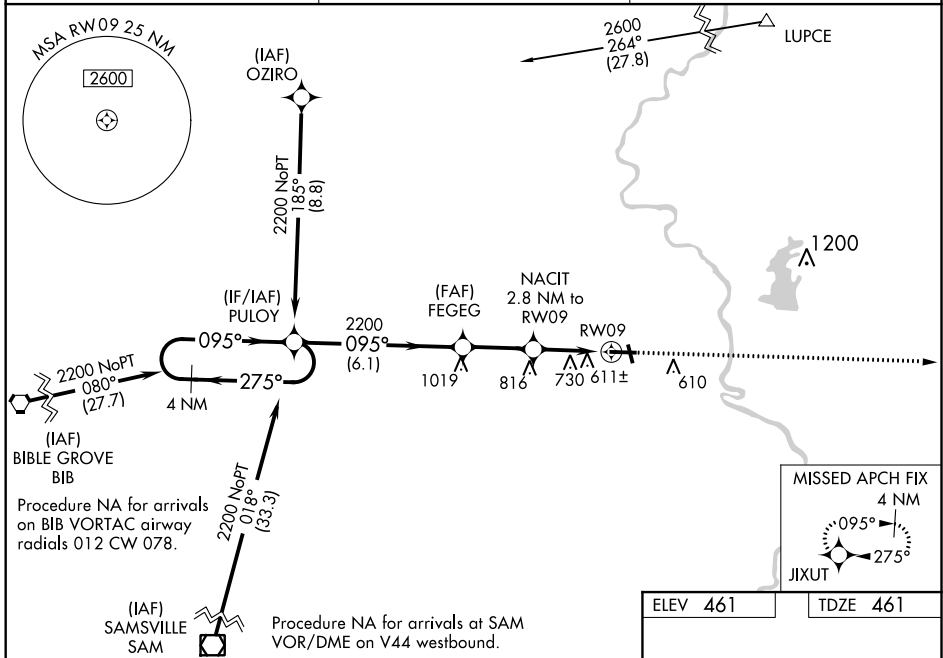
RNAV (GPS) RWY 9

CRAWFORD CO (RSV)

⚠ Baro-VNAV NA when using Terre Haute Rgnl altimeter setting. For uncompensated Baro-VNAV systems, LNAV/VNAV NA below -15°C (5°F) or above 54°C (130°F). DME/DME RNP-0.3 NA. When local altimeter setting not received, use Terre Haute Rgnl altimeter setting and increase all DA 89 feet and all MDA 100 feet; increase LPV all Cats visibility ¼ mile, increase LNAV Cats C/D visibility ¼ mile and Circling Cats C/D ½ mile. Helicopter visibility reduction below 1 SM NA. Rwy 9 Straight-in minimums NA at night.

MISSED APPROACH:
Climb to 2200 direct JIXUT and hold.

AWOS-3 120.50	HULMAN APP CON 119.25 339.8	UNICOM 123.0 (CTAF) 0
-------------------------	---------------------------------------	---------------------------------



CATEGORY	A	B	C	D
LPV DA		805-1 1/8	344 (400-1 1/8)	
LNAV/VNAV DA		1103-2 1/2	642 (700-2 1/2)	
LNAV MDA	1040-1	579 (600-1)	1040-1 5/8	579 (600-1 5/8)
C CIRCLING	1040-1 579 (600-1)	1080-1 619 (700-1)	1120-1 3/4 659 (700-1 3/4)	1180-2 1/4 719 (800-2 1/4)

REIL Rwy 17, 9 and 27 **0**
MIRL Rwy 9-27 and 17-35 **0**

EC-3, 25 MAR 2021 to 22 APR 2021

EC-3, 25 MAR 2021 to 22 APR 2021