

APP CRS	Rwy Idg	4899
083°	TDZE	634
	Apt Elev	634

RNAV (GPS) RWY 8

GRIFFITH-MERRILLVILLE (Ø5C)

RNP APCH.

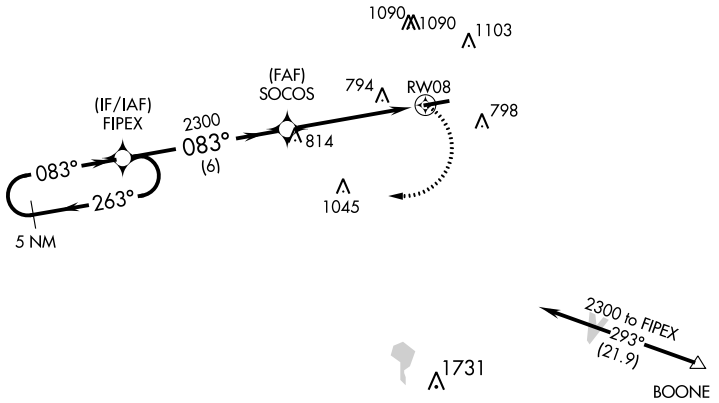
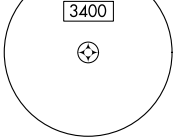
▼ Obtain local altimeter setting on CTAF; when not received use Chicago Midway
 ▲ NA Init altimeter setting and increase all MDAs 60 feet. Visibility reduction by helicopters NA. Procedure NA at night.

MISSED APPROACH: Climbing right turn to 2300 direct FIPEX and hold.

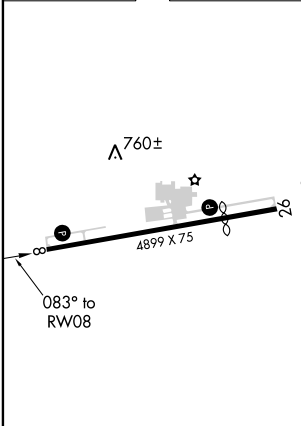
CHICAGO APP CON
133.1 285.6

UNICOM
123.0 (CTAF) 1

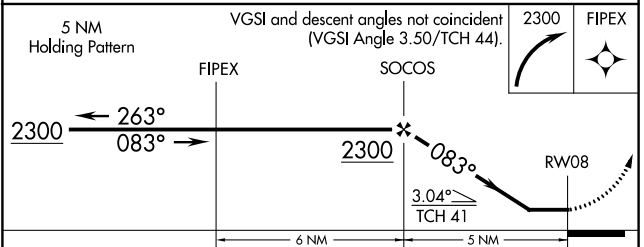
MSA RW08 25 NM



ELEV 634	TDZE 634
----------	----------



Procedure NA for arrivals at BOONE via V422 southeastbound.



CATEGORY	A	B	C	D
LNAV MDA	1080-1	446 (500-1)	NA	
<input checked="" type="checkbox"/> CIRCLING	1200-1	566 (600-1)	NA	

REIL Rwy 8 and 26 1
 MIRL Rwy 8-26 1

EC-2, 25 MAR 2021 to 22 APR 2021

EC-2, 25 MAR 2021 to 22 APR 2021