

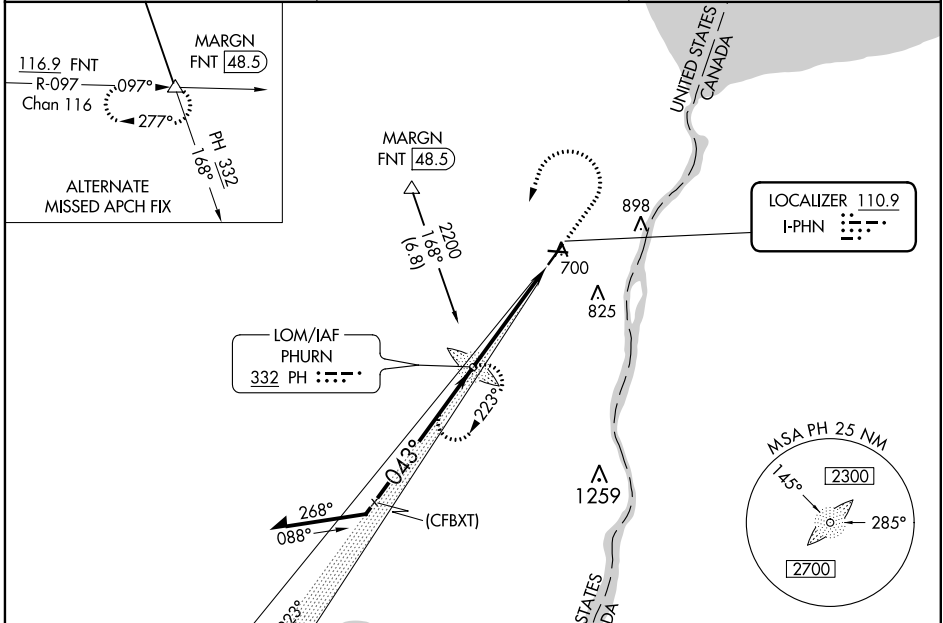
LOC I-PTHN 110.9	APP CRS 043°	Rwy Idg 5104
		TDZE 647
		Apt Elev 650

ILS or LOC RWY 4

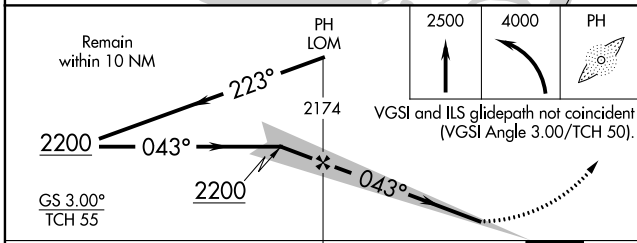
ST CLAIR COUNTY INTL (PHN)

<p>▽ ADF required. When local altimeter setting not received, use Troy altimeter setting and increase all DA 95 feet and all MDA 100 feet; increase S-LOC 4 Cats C and D and Circling Cats C and D visibility ¼ mile. For inop MALSR when using Troy altimeter setting, increase S-ILS 4 all CATS visibility to ¾ mile. Night landing: Rwy 10, 22, 28 NA.</p>	<p>MALSR</p>	<p>MISSED APPROACH: Climb to 2500 then climbing left turn to 4000 direct PHURN LOM and hold, continue climb-in-hold to 4000.</p>
--	---------------------	---

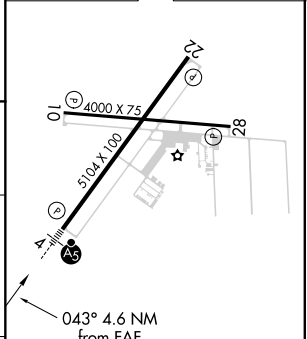
AWOS-3 118.375	SELFDRGE APP CON * 119.6 391.9	UNICOM 123.05 (CTAF)
--------------------------	--	--------------------------------



ADF REQUIRED



ELEV 650	TDZE 647
----------	----------



CATEGORY	A	B	C	D
S-ILS 4	847-½ 200 (200-½)			
S-LOC 4	1100-½ 453 (500-½)	1100-¾ 453 (500-¾)		
C CIRCLING	1160-1 510 (600-1)	1260-1¼ 610 (700-1¼)		1260-2 610 (700-2)

FAF to MAP 4.6 NM					
Knots	60	90	120	150	180
Min:Sec	4:36	3:04	2:18	1:50	1:32

HIRL Rwy 4-22
MIRL Rwy 10-28
REIL Rws 10, 22, and 28

EC-1, 25 MAR 2021 to 22 APR 2021

EC-1, 25 MAR 2021 to 22 APR 2021