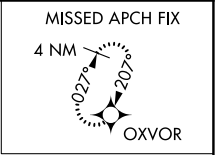
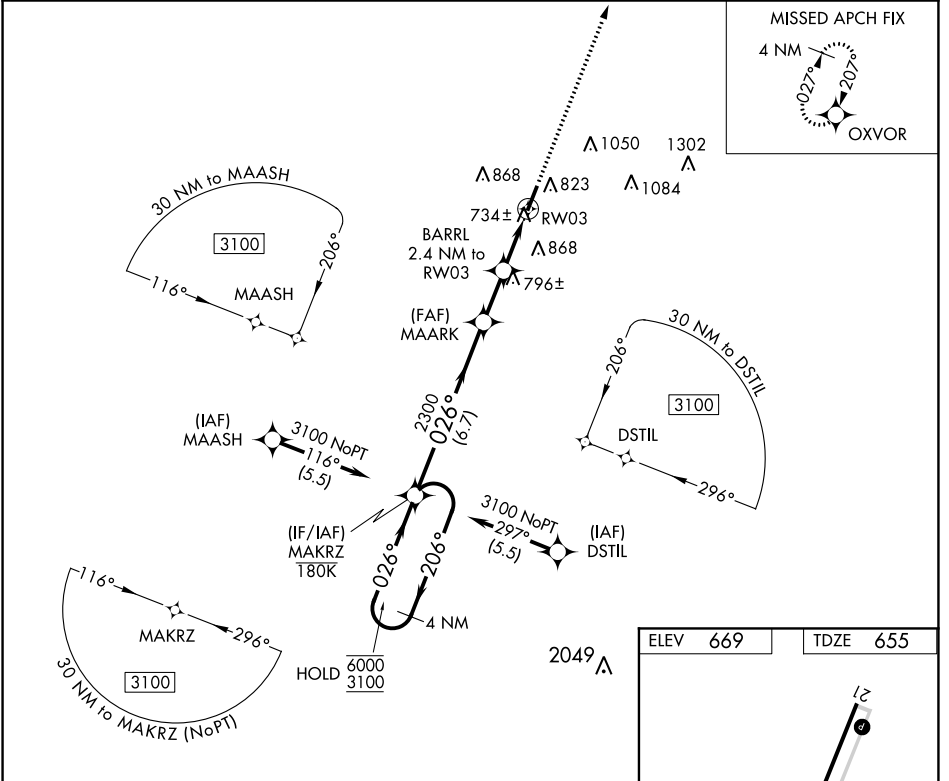


APP CRS	Rwy Idg	5003
026°	TDZE	655
	Apt Elev	669

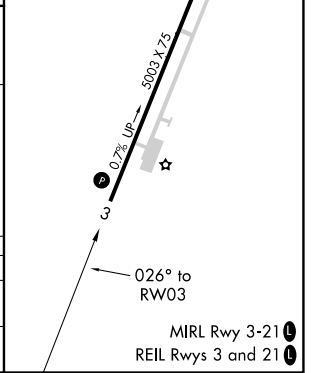
RNAV (GPS) RWY 3

SAMUELS FIELD (BRY)

RNP APCH.		MISSED APPROACH: Climb to 3000 direct OXVOR and hold.
	Rwy 3 helicopter visibility reduction below 3/4 SM NA.	
AWOS-3 119.925	LOUISVILLE APP CON 132.075 327.0	UNICOM 122.8 (CTAF)



4 NM Holding Pattern	MAKZ	MAARK	BARRL 2.4 NM to RW03	3000 OXVOR
6000 ← 206°	3100 → 026°	2300	1560	
6.7 NM		2 NM	1.5 NM	0.9 NM
CATEGORY	A	B	C	D
LNVA MDA	1000-1 345 (400-1)			
CIRCLING	1200-1 531 (600-1)	1260-1 591 (600-1)	1360-2 691 (700-2)	1480-2 3/4 811 (900-2 3/4)



SE-1, 25 MAR 2021 to 22 APR 2021

SE-1, 25 MAR 2021 to 22 APR 2021