

VOR/DME EWO 110.8 Chan 45	APP CRS 037°	Rwy Idg TDZE Apt Elev	5003 655 669
--	------------------------	-----------------------------	---

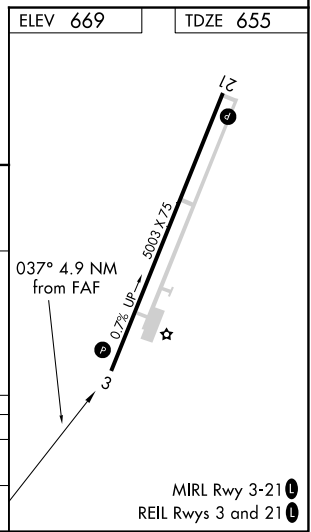
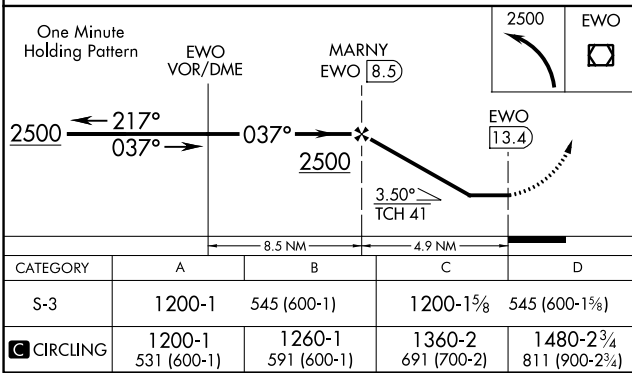
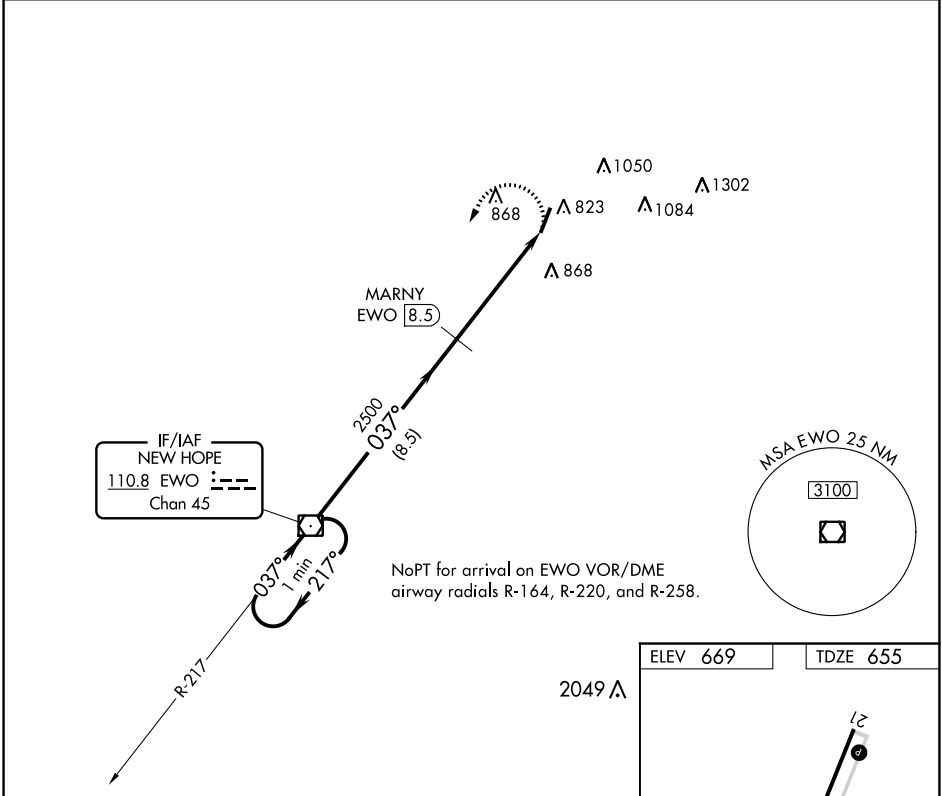
VOR RWY 3

SAMUELS FIELD (BRY)

Straight-in and Circling minimums NA at night.
 Rwy 3 helicopter visibility reduction below 1 SM NA.
 DME required.

MISSED APPROACH: Climbing left turn to 2500 direct EWO VOR/DME and hold.

AWOS-3 119.925	LOUISVILLE APP CON 132.075 327.0	UNICOM 122.8 (CTAF) 0
--------------------------	--	---------------------------------



SE-1, 25 MAR 2021 to 22 APR 2021

SE-1, 25 MAR 2021 to 22 APR 2021