

WAAS CH 86324	APP CRS 007°	Rwy Idg TDZE Apt Elev	5001 489 489
-------------------------	------------------------	-----------------------------	---

RNAV (GPS) RWY 1

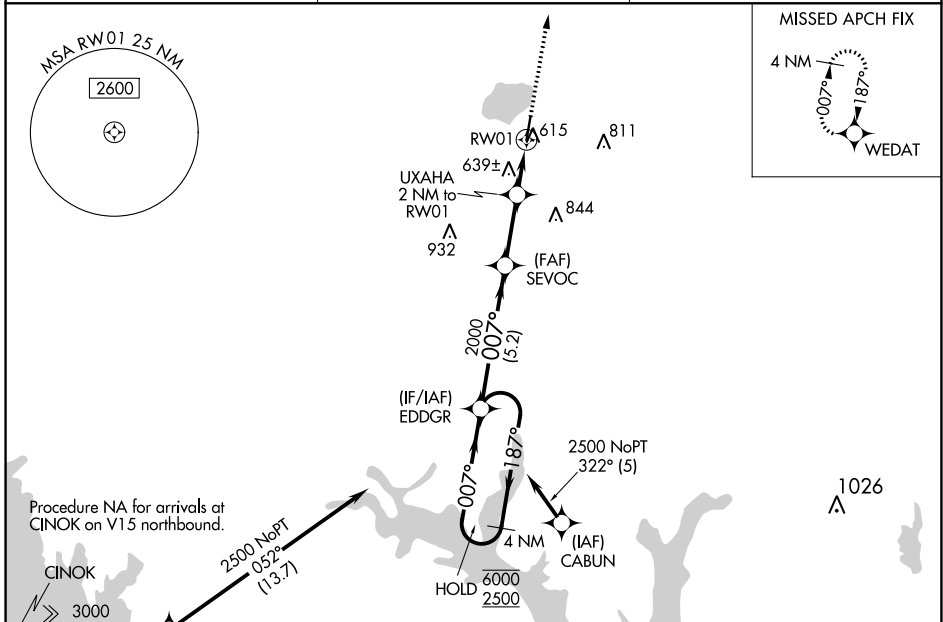
SULPHUR SPRINGS MUNI (SLR)

RNP APCH.

⚠ Circling NA east of Rwy 1-19. Rwy 1 helicopter visibility reduction below 3/4 SM NA.
 ⚠ For uncompensated Baro-VNAV systems, LNAV/VNAV NA below -15°C or above 54°C.

MISSED APPROACH: Climb to 3000 direct WEDAT and hold.

AWOS-3 118.35	FORT WORTH CENTER 132.025 360.75	UNICOM 123.075 (CTAF)
-------------------------	--	---------------------------------



Procedure NA for arrivals at CINOK on V15 northbound.

CINOK 3000 086° (17.7) (IAF) BILYA

2500 NoPT 052° (113.7)

2000 007° (5.2)

2000 007° (5.2)

UXAHA 639± 615 811 844 932 (FAF) SEVOC

2 NM to RWY 1

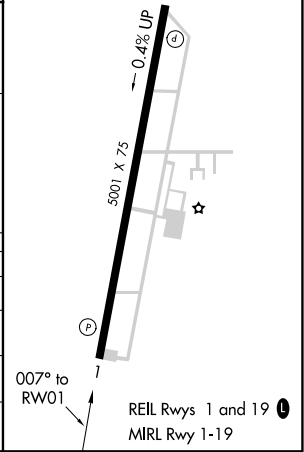
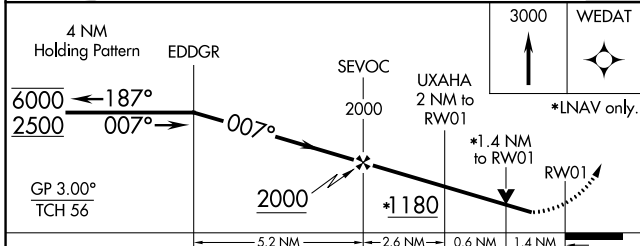
4 NM (IAF) CABUN

2500 NoPT 322° (5)

HOLD 6000/2500

1026

ELEV 489	TDZE 489
----------	----------



CATEGORY	A	B	C	D
LPV DA	803-1	314 (400-1)		NA
LNAV/VNAV DA	975-1 5/8	486 (500-1 5/8)		NA
LNAV MDA	1000-1	511 (600-1)	1000-1 3/8 511 (600-1 3/8)	NA
CIRCLING	1000-1	511 (600-1)	1000-1 1/2 511 (600-1 1/2)	NA

SC-2, 25 MAR 2021 to 22 APR 2021

SC-2, 25 MAR 2021 to 22 APR 2021