

WAAS CH 90323 W19A	APP CRS 187°	Rwy Idg TDZE 476 Apt Elev 489	5001 476 489
--	------------------------	---	---

RNAV (GPS) RWY 19

SULPHUR SPRINGS MUNI (SLR)

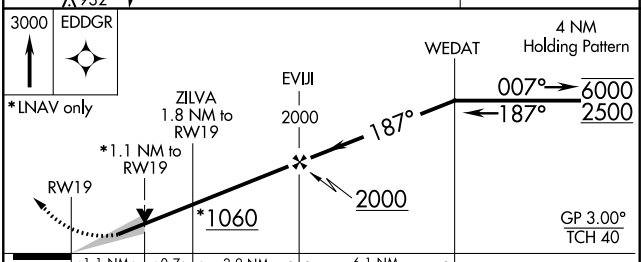
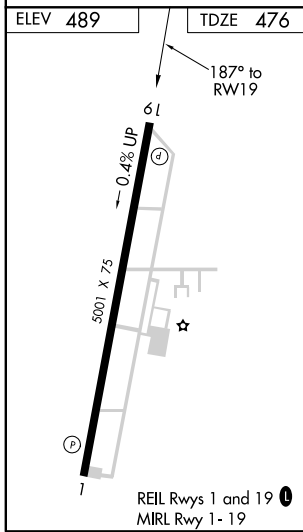
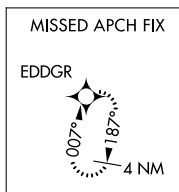
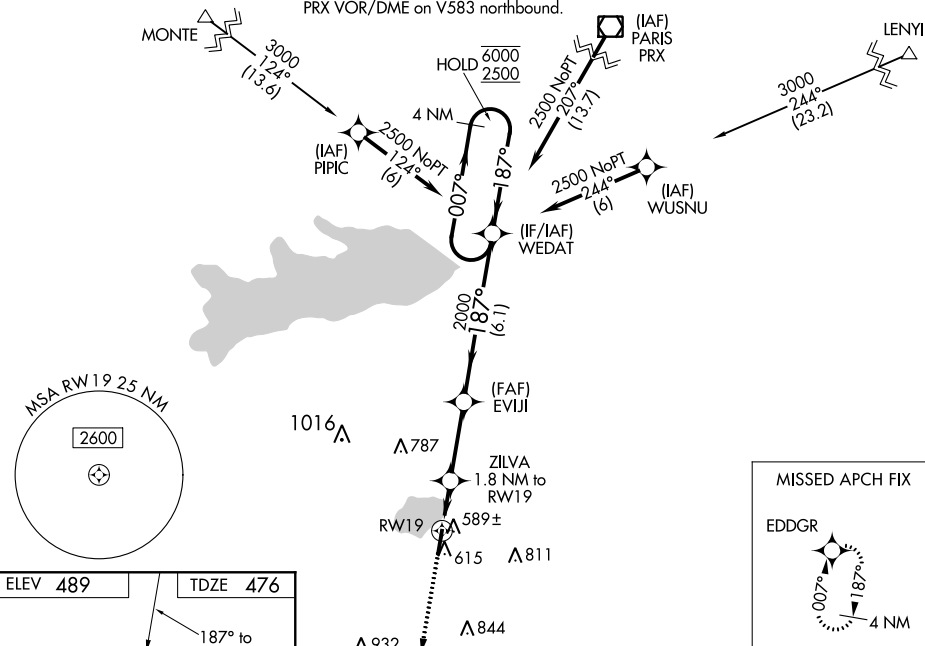
RNP APCH.

⚠ Circling NA east of Rwy 1-19. For uncompensated Baro-VNAV systems, LNAV/VNAV NA below -15°C or above 54°C.

MISSED APPROACH: Climb to 3000 direct EDDGR and hold.

AWOS-3 118.35	FORT WORTH CENTER 132.025 360.75	UNICOM 123.075 (CTAF) 0
-------------------------	--	-----------------------------------

Procedure NA for arrivals at PRX VOR/DME on V583 northbound.



CATEGORY	A	B	C	D
LPV DA	726-3/4	250 (300-3/4)		NA
LNAV/VNAV DA	776-1	300 (300-1)		NA
LNAV MDA	840-1	364 (400-1)		NA
C CIRCLING	940-1	451 (500-1)	1000-1 1/2 511 (600-1 1/2)	NA

SC-2, 25 MAR 2021 to 22 APR 2021

SC-2, 25 MAR 2021 to 22 APR 2021