

ILS or LOC RWY 26R

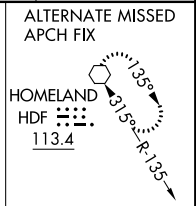
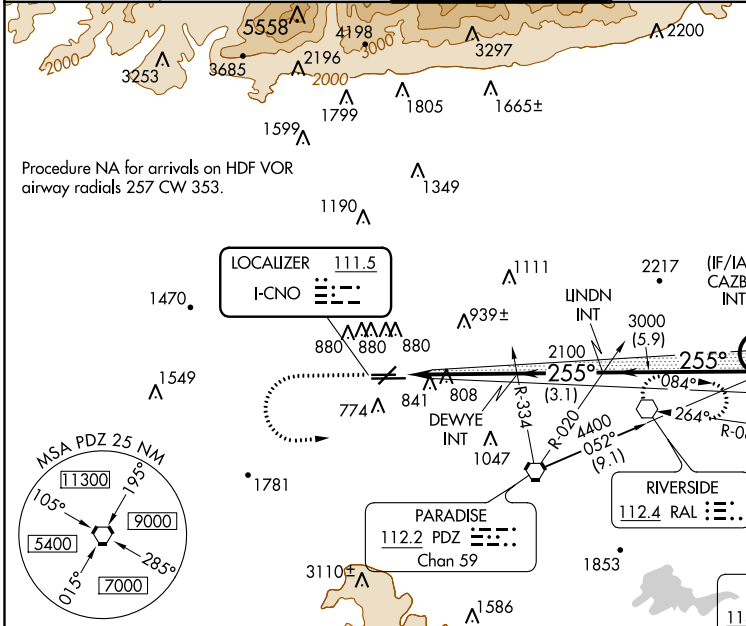
CHINO (CNO)

LOC I-CNO 111.5	APP CRS 255°	Rwy Idg 4858
		TDZE 636
		Apt Elev 650

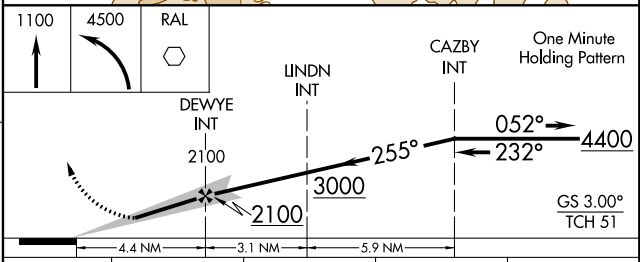
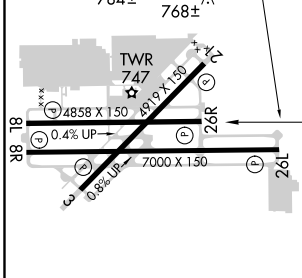
▼ Helicopter visibility reduction below 3/4 SM NA.
▲ When local altimeter setting not received, use Ontario altimeter setting and increase all DA 54 feet and all MDA 60 feet, increase S-ILS 26R all Cats, S-LOC 26R Cat D and Circling Cat C visibility 1/4 mile.

MISSED APPROACH: Climb to 1100 then climbing left turn to 4500 direct RAL VOR and hold, continue climb-in-hold to 4500.

ATIS 125.85	SOCAL APP CON 135.4 318.2	CHINO TOWER * 118.5 (CTAF)	GND CON 121.6	UNICOM 122.95
-----------------------	-------------------------------------	--------------------------------------	-------------------------	-------------------------



ELEV 650	TDZE 636
----------	----------



REIL Rwy 3 and 21
 MIRL Rwy 3-21 and 8R-26L
 HIRL Rwy 8L-26R

FAF to MAP 4.4 NM

Knots	60	90	120	150	180
Min:Sec	4:24	2:56	2:12	1:46	1:28

CATEGORY	A	B	C	D
S-ILS 26R	886-3/4 250 (300-3/4)			
S-LOC 26R	1060-1	424 (500-1)	1060-1 1/4	424 (500-1 1/4)
CIRCLING	1180-1	530 (600-1)	1240-1 1/2	1240-2
			590 (600-1 1/2)	590 (600-2)

SW-3, 25 MAR 2021 to 22 APR 2021

SW-3, 25 MAR 2021 to 22 APR 2021