

WAAS CH <b>45836</b> <b>W22A</b>	APP CRS <b>223°</b>	Rwy Idg TDZE Apt Elev	<b>4504</b> <b>90</b> <b>92</b>
--	------------------------	-----------------------------	---------------------------------------

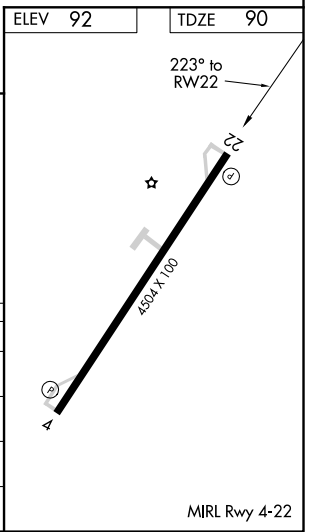
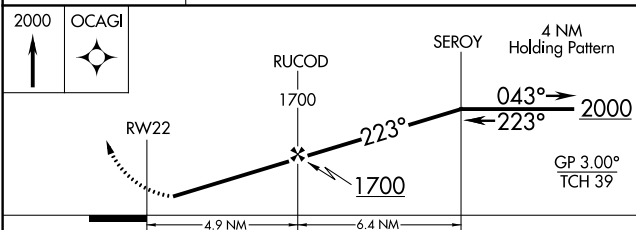
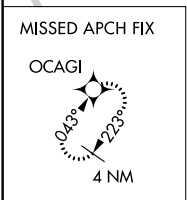
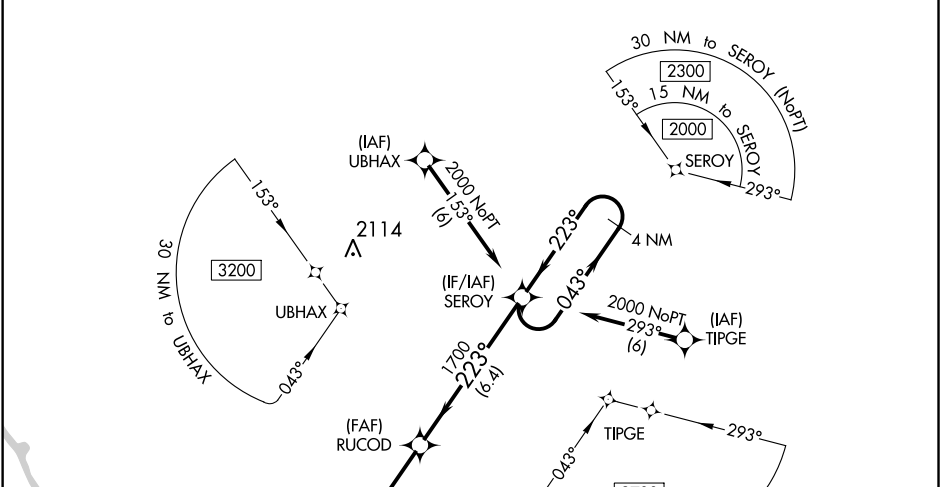
# RNAV (GPS) RWY 22

MARION COUNTY (MAO)

**⚠** Baro-VNAV NA when using Florence altimeter setting. For uncompensated Baro-VNAV systems, LNAV/VNAV NA below -8°C (18°F) or above 54°C (130°F). DME/DME RNP-0.3 NA. Helicopter visibility reduction below ¼ SM NA. When local altimeter setting not received, use Florence altimeter setting and increase all DA 53 feet and all visibilities ¼ mile, increase all MDA 60 feet and all Cat C/D visibilities ¼ mile.

**⚠** MISSED APPROACH: Climb to 2000 direct OCAGI and hold.

AWOS-3 <b>119.875</b>	FLORENCE APP CON * <b>135.25 316.15</b>	UNICOM <b>122.8</b> (CTAF)
--------------------------	--	-------------------------------



CATEGORY	A	B	C	D
LPV DA		396-1	306 (400-1)	
LNAV/VNAV DA		577-1½	487 (500-1½)	
LNAV MDA	680-1	590 (600-1)	680-1¾	590 (600-1¾)
<b>C</b> CIRCLING	720-1	628 (700-1)	720-1¾ 628 (700-1¾)	960-2¾ 868 (900-2¾)

SE-2, 25 MAR 2021 to 22 APR 2021

SE-2, 25 MAR 2021 to 22 APR 2021

MIRL Rwy 4-22