

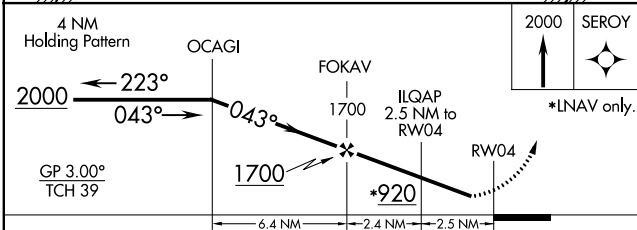
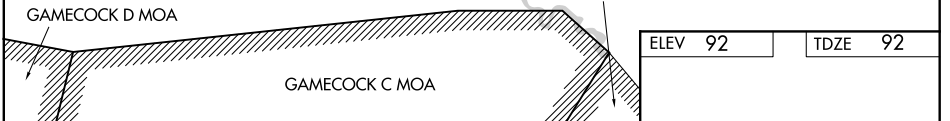
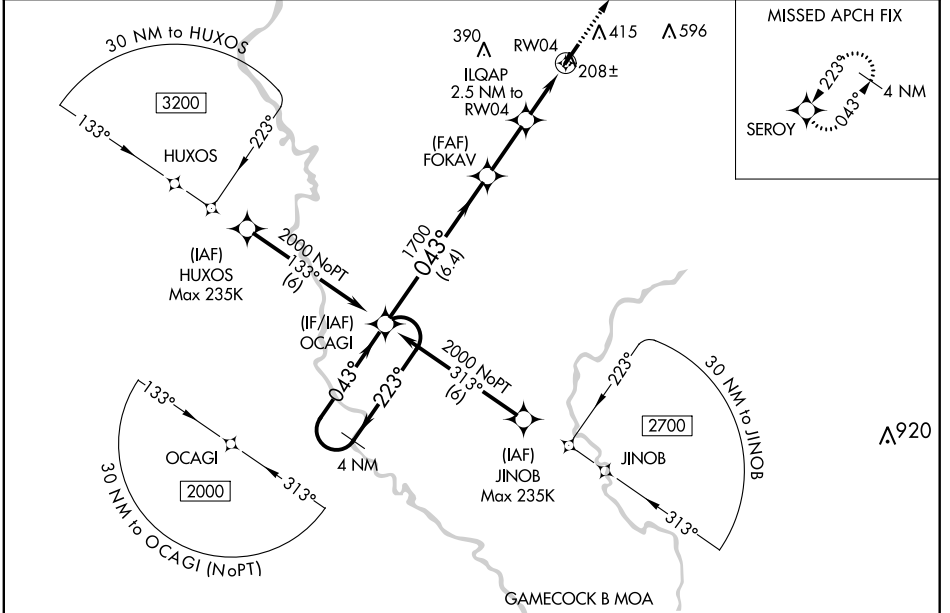
WAAS CH <b>40336</b> <b>W04A</b>	APP CRS <b>043°</b>	Rwy Idg TDZE Apt Elev	<b>4504</b> <b>92</b> <b>92</b>
----------------------------------------	------------------------	-----------------------------	---------------------------------------

**RNAV (GPS) RWY 4**  
MARION COUNTY (MAO)

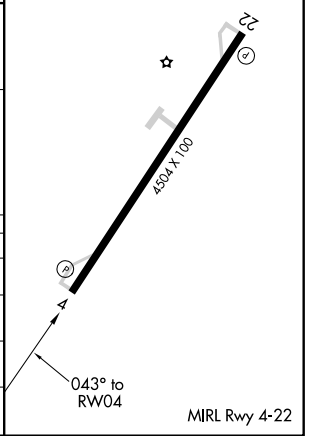
**⚠** Baro-VNAV NA when using Florence altimeter setting. For uncompensated Baro-VNAV systems, LNAV/VNAV NA below -8°C (18°F) or above 54°C (130°F). DME/DME RNP-0.3 NA. Helicopter visibility reduction below 3/4 SM NA. When local altimeter setting not received, use Florence altimeter setting and increase all DA 53 feet and all visibilities 1/8 mile, increase all MDA 60 feet and all Cat C/D visibilities 1/4 mile.

**⚠** MISSED APPROACH: Climb to 2000 direct SEROY and hold.

AWOS-3 <b>119.875</b>	FLORENCE APP CON * <b>135.25 316.15</b>	UNICOM <b>122.8 (CTAF)</b>
--------------------------	--------------------------------------------	-------------------------------



CATEGORY	A	B	C	D
LPV DA	342-7/8	250 (300-7/8)	342-1	250 (300-1)
LNAV/VNAV DA	369-7/8	277 (300-7/8)	369-1	277 (300-1)
LNAV MDA	460-1		368 (400-1)	
<b>C</b> CIRCLING	720-1	628 (700-1)	720-1 1/4 628 (700-1 1/4)	960-2 3/4 868 (900-2 3/4)



SE-2, 25 MAR 2021 to 22 APR 2021

SE-2, 25 MAR 2021 to 22 APR 2021