

WAAS CH 53604 W36A	APP CRS 360°	Rwy Idg THRE 321 Apt Elev 333
---------------------------------	------------------------	---

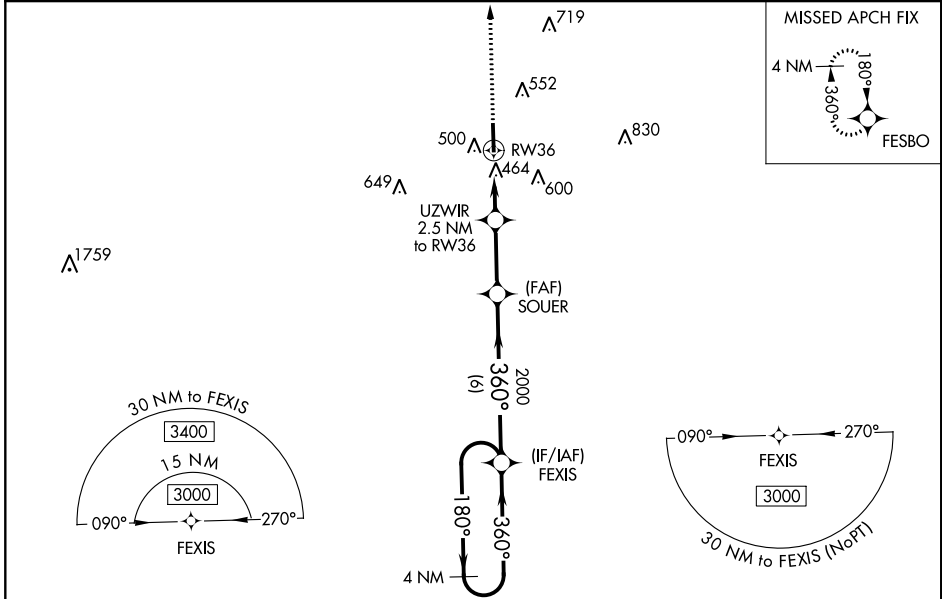
RNAV (GPS) RWY 36

GEORGE M BRYAN (STF)

▼ **NA**
 For uncompensated Baro-VNAV systems, LNAV/VNAV NA below -15°C (5°F) or above 54°C (130°F). DME/DME RNP-0.3 NA. Helicopter visibility reduction below 3/4 SM NA. When local altimeter setting not received, use Golden Triangle Rgnl altimeter setting and increase all DA/MDA 40 feet; increase LNAV/VNAV all Cats and LNAV Cats C/D visibility 1/8 mile. Increase Circling Cat C visibility 1/4 mile. Baro-VNAV and VDP NA when using Golden Triangle Rgnl altimeter setting. When VGSi inop, Circling Rwy 18 NA at night.

MISSED APPROACH: Climb to 3400 direct FESBO and hold, continue climb-in-hold to 3400.

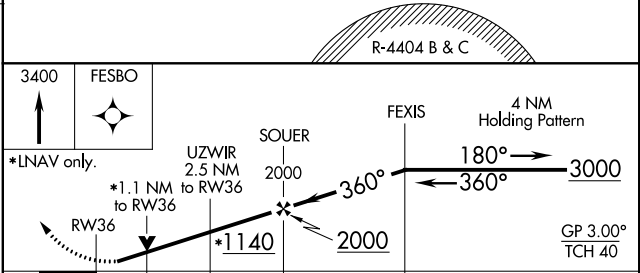
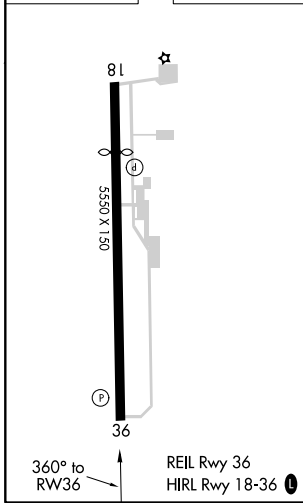
AWOS-3PT 118.975	COLUMBUS APP CON* 135.6 323.275	CLNC DEL 126.25	UNICOM 122.7 (CTAF) 0
----------------------------	---	---------------------------	--



SC-4, 25 MAR 2021 to 22 APR 2021

SC-4, 25 MAR 2021 to 22 APR 2021

ELEV 333	THRE 321
----------	----------



CATEGORY	A	B	C	D
LPV DA	521-3/4		200 (200-3/4)	
LNAV/VNAV DA	645-1 1/8		324 (400-1 1/8)	
LNAV MDA	720-1 399 (400-1)		720-1 1/8 399 (400-1 1/8)	
<input checked="" type="checkbox"/> CIRCLING	920-1 587 (600-1)		920-1 1/2 587 (600-1 1/2) 1020-2 1/4 687 (700-2 1/4)	