

ECHOO ONE DEPARTURE (RNAV)

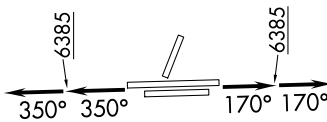
AL-5715 (FAA)

CENTENNIAL (APA)
DENVER, COLORADO

SW-1, 25 MAR 2021 to 22 APR 2021

TOP ALTITUDE:
FL230

- NOTE: DME/DME/IRU or GPS required.
- NOTE: RNAV 1.
- NOTE: Turbojets only.
- NOTE: RADAR required.
- NOTE: Accelerate to 250K or greater upon reaching 10000.
- NOTE: If slower speed is required to meet crossing restrictions advise CLNC DEL prior to taxi.



TAKEOFF MINIMUMS

Rwys 10, 28: NA.

Rwy 17L: Standard with minimum climb of 255' per NM to 8000.

Rwy 17R: Standard with minimum climb of 370' per NM to 8000.

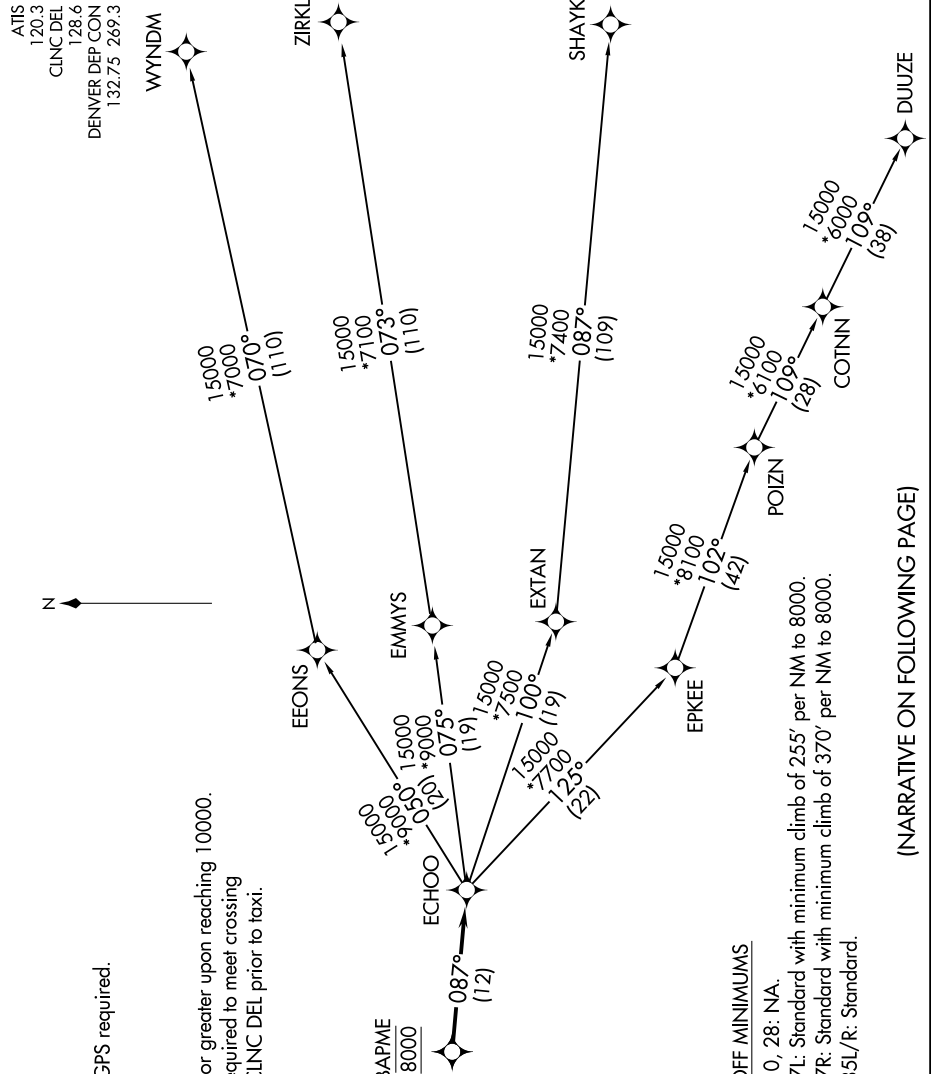
Rwys 35L/R: Standard.

NOTE: Chart not to scale.

(NARRATIVE ON FOLLOWING PAGE)

SW-1, 25 MAR 2021 to 22 APR 2021

ECHOO ONE DEPARTURE (RNAV)



ATIS
120.3
CLNC DEL
128.6
DENVER DEP COIN
132.75 269.3