

WAAS CH 72930 W17A	APP CRS 170°	Rwy Idg TDZE Apt Elev	10000 5823 5885
---------------------------------	------------------------	-----------------------------	--

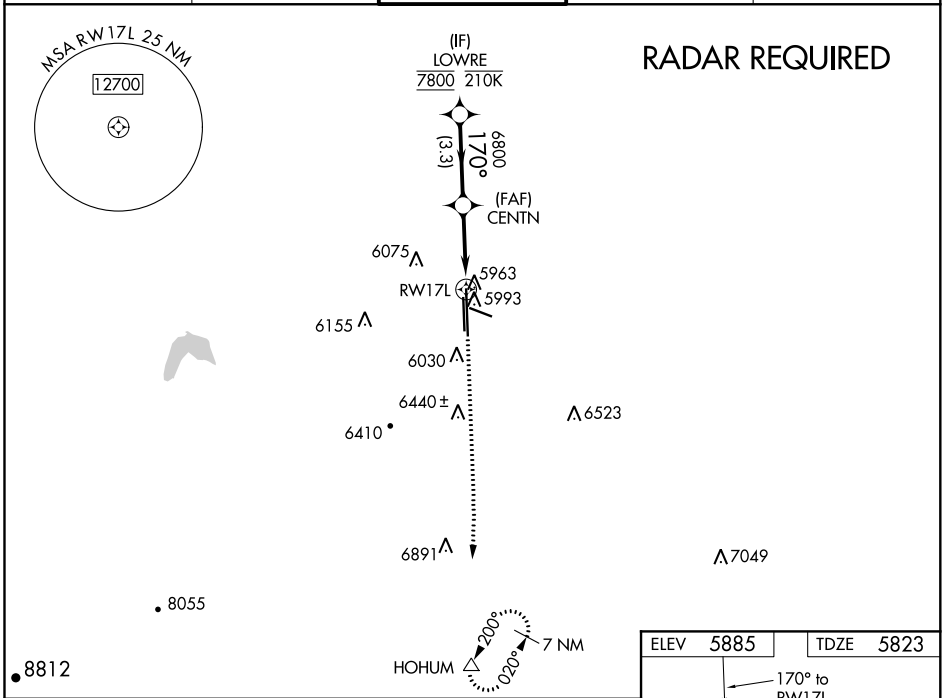
RNAV (GPS) RWY 17L

CENTENNIAL (APA)

▼ For uncompensated Baro-VNAV systems, LNAV/VNAV NA below -20°C (-4°F) or above 47°C (118°F). DME/DME RNP-0.3 NA.
▲ Night Landing: Rwy 35L NA.

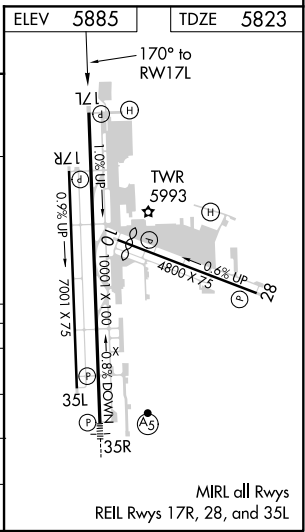
MISSED APPROACH: Climb to 6300 then climbing right turn to 10400 direct HOHUM and hold, continue climb-in-hold to 10400.

ATIS 120.3	DENVER APP CON 132.75 269.3	CENTENNIAL TOWER 118.9	GND CON 121.8	CLNC DEL 128.6
----------------------	---------------------------------------	---	-------------------------	--------------------------



RADAR REQUIRED

	LOWRE 7800	CENTN 6800	170°	6800	RWY 17L
	GP 3.00° TCH 47			*1.2 NM to RWY 17L	
	3.3 NM	1.8 NM		1.2 NM	
CATEGORY	A	B	C	D	
LPV DA		6023-3/4	200 (200-3/4)		
LNAV/VNAV DA		6154-1 1/4	331 (300-1 1/4)		
LNAV MDA	6220-1	397 (400-1)	6220-1 1/8	397 (400-1 1/8)	
CIRCLING	6400-1 515 (600-1)	6540-1 655 (700-1)	6740-2 1/2 855 (900-2 1/2)	6900-3 1015 (1100-3)	



SW-1, 25 MAR 2021 to 22 APR 2021

SW-1, 25 MAR 2021 to 22 APR 2021