

WAAS CH 72619 W18A	APP CRS 183°	Rwy Idg TDZE Apt Elev	5404 173 173
--	------------------------	-----------------------------	---

RNAV (GPS) RWY 18

FLETCHER FIELD (CKM)

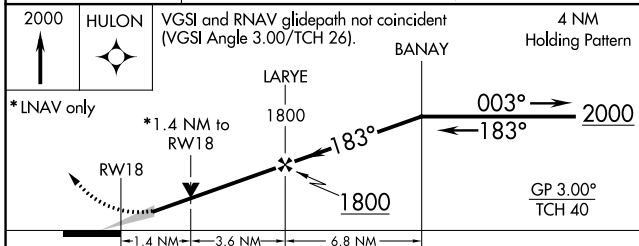
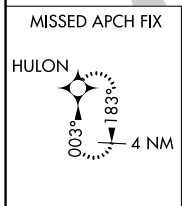
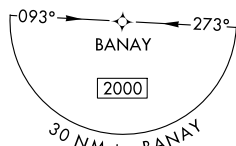
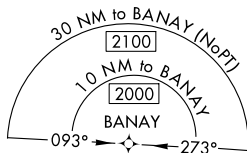
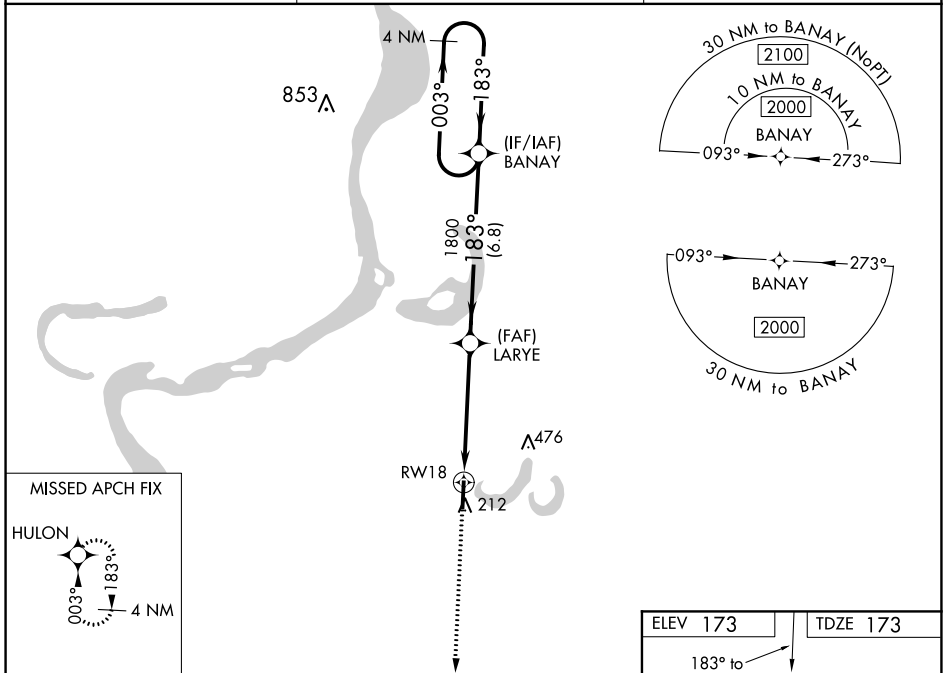
⚠ For uncompensated Baro-VNAV systems, LNAV/VNAV NA below -15°C (5°F) or above 54°C (130°F). Baro-VNAV and VDP NA when using Tunica altimeter setting. DME/DME RNP-0.3 NA. When local altimeter setting not received, use Tunica altimeter setting: increase LPV DA to 483 feet, LNAV/VNAV DA to 647 feet and all MDA 60 feet; increase LPV all Cats visibility 1/8 SM, LNAV/VNAV all Cats visibility 1/4 SM, and LNAV Cat C/D visibility 1/8 SM. Circling Rwy 36 NA at night.

MISSED APPROACH:
Climb to 2000 direct HULON and hold.

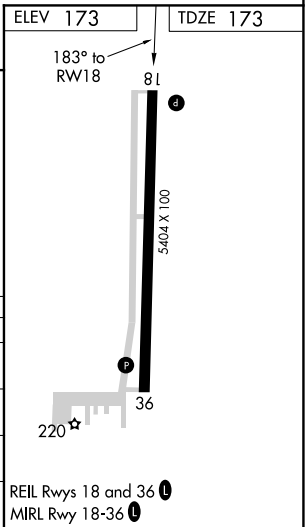
AWOS-3
120.675

MEMPHIS CENTER
135.3 335.8

UNICOM
122.8 (CTAF) 0



CATEGORY	A	B	C	D
LPV DA	423-7/8		250 (300-7/8)	
LNAV/VNAV DA	587-13/8		414 (500-13/8)	
LNAV MDA	640-1	467 (500-1)	640-13/8	467 (500-13/8)
C CIRCLING	740-1	567 (600-1)	780-13/4 607 (700-13/4)	780-2 607 (700-2)



SC-4, 25 MAR 2021 to 22 APR 2021

SC-4, 25 MAR 2021 to 22 APR 2021