

WAAS CH 93635 W32A	APP CRS 324°	Rwy Idg TDZE Apt Elev	4200 448 455
--	------------------------	-----------------------------	---

RNAV (GPS) RWY 32

EASTERN SLOPES RGNL (IZG)

RNP APCH.

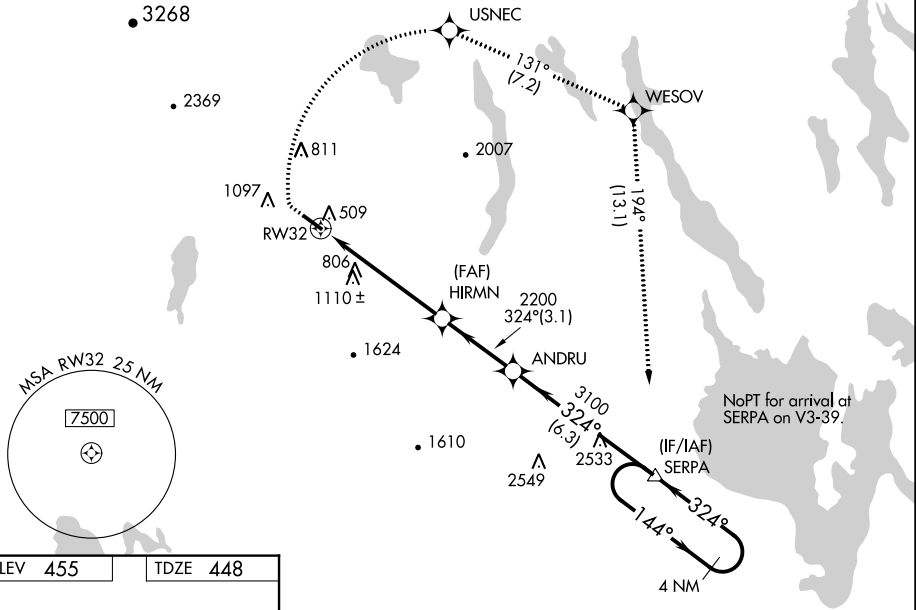
When local altimeter setting not received, use Auburn/Lewiston altimeter setting and increase all DA to 1005 feet and increase LPV all Cats visibility $\frac{1}{4}$ SM; increase all MDA 100 feet, and increase LNAV Cat B visibility $\frac{1}{4}$ SM and Cat C visibility $\frac{1}{2}$ SM, and increase Circling Cat B visibility $\frac{1}{4}$ SM. Rwy 32 helicopter visibility reduction below $\frac{3}{4}$ SM NA. VDP NA when using Auburn/Lewiston altimeter setting. Circling to Rwy 14 NA at night.

MISSED APPROACH: Climb to 1040 then climbing right turn to 3600 direct USNEC and on track 131° to WESOV and on track 194° to SERPA and on track 194° to SERPA and hold.

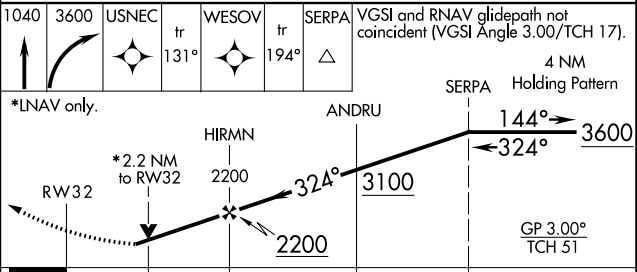
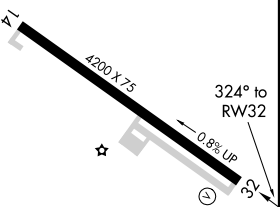
ASOS
135.775

PORTLAND APP CON *
119.75 269.35

UNICOM
122.8 (CTAF)



ELEV 455	TDZE 448
----------	----------



CATEGORY	A	B	C	D
LPV DA	914- $1\frac{3}{8}$		466 (500- $1\frac{3}{8}$)	NA
LNAV MDA	1140-1	692 (700-1)	1140-2 692 (700-2)	NA
C CIRCLING	1340-1 885 (900-1 $\frac{1}{4}$)	1400-1 945 (1000-1 $\frac{1}{4}$)	1560-3 1105 (1200-3)	NA

REIL Rwy 32
MIRL Rwy 14-32

FRYEBURG, MAINE
Amdt 1B 30JAN20

43°59'N - 70°57'W

RNAV (GPS) RWY 32

EASTERN SLOPES RGNL (IZG)

NE-1, 25 MAR 2021 to 22 APR 2021

NE-1, 25 MAR 2021 to 22 APR 2021