

VOR/DME BAE <b>116.4</b> Chan <b>111</b>	APP CRS <b>180°</b>	Rwy ldg TDZE Apt Elev <b>N/A</b> <b>N/A</b> <b>780</b>
--	------------------------	---

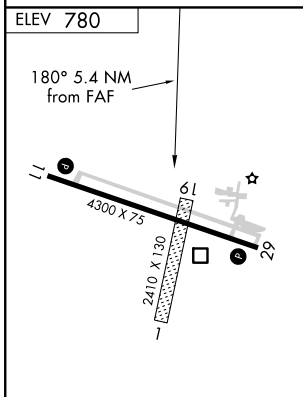
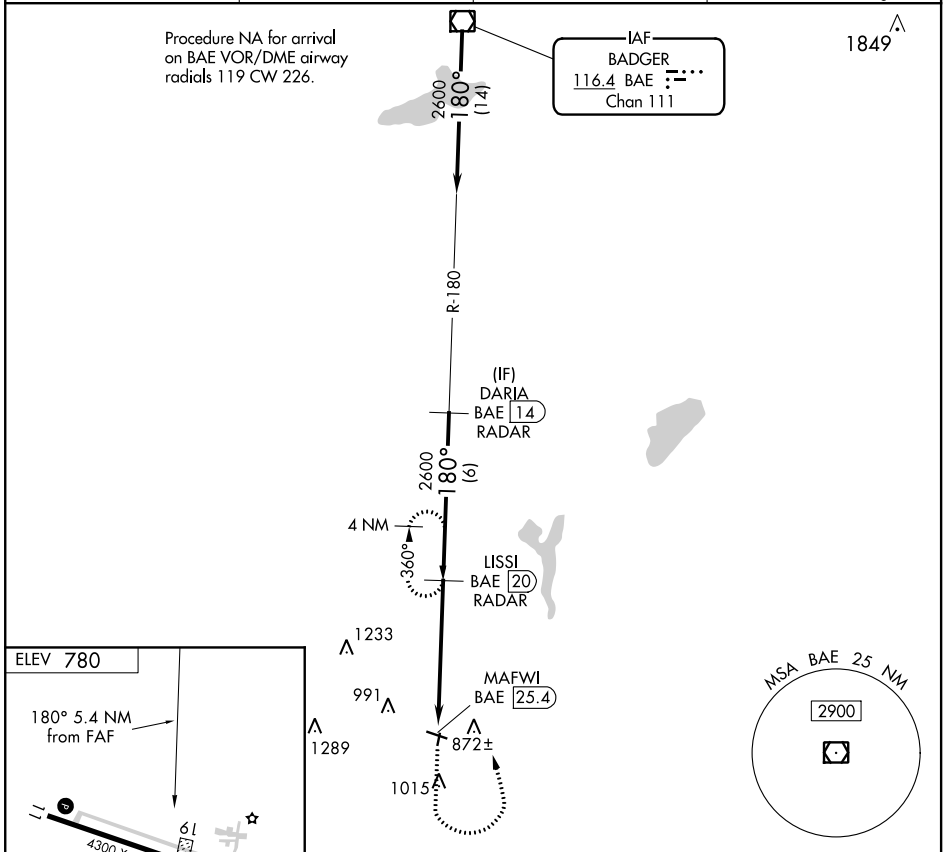
**VOR-A**  
BURLINGTON MUNI (BUU)

DME or RADAR required.

**▼** Circling NA to Rwy 1 and 19. Circling Rwy 29 NA at night. When local altimeter setting not received, use General Mitchell Intl altimeter setting and increase all MDA 80 feet, increase Circling Cat C/D visibility ¼ SM.

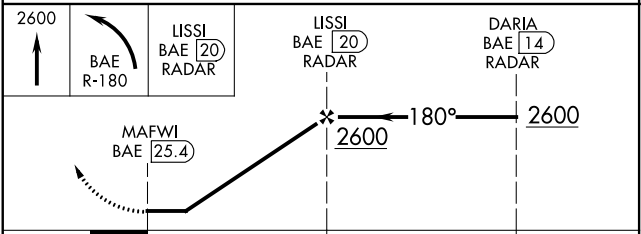
**▲** MISSED APPROACH: Climb to 2600 then left turn on BAE VOR/DME R-180 to LISSI/20 DME/RADAR and hold.

AWOS-3 <b>125.275</b>	MILWAUKEE APP CON <b>135.875 307.0</b>	GCO <b>121.725</b>	UNICOM <b>123.05 (CTAF) 0</b>
--------------------------	---	-----------------------	----------------------------------



MIRL Rwy 11-29  
REIL Rwys 11 and 29

FAF to MAP 5.4 NM					
Knots	60	90	120	150	180
Min:Sec	5:24	3:36	2:42	2:10	1:48



CATEGORY	A	B	C	D
<b>C</b> CIRCLING	1400-1	620 (700-1)	1400-1¾ 620 (700-1¾)	1560-2½ 780 (800-2½)

EC-3, 25 MAR 2021 to 22 APR 2021

EC-3, 25 MAR 2021 to 22 APR 2021